



सत्यमेव जयते
Government of India
Ministry of Earth Sciences
Earth System Science Organisation



Earth System Science Organisation
India Meteorological Department

PRESS RELEASE-5

Time of issue: 1300 hours IST

Dated: 29-04-2019

Sub: Cyclonic Storm “FANI” over southeast Bay of Bengal & neighbourhood

Yesterday’s cyclonic storm ‘FANI’ (pronounced as ‘FONI’) over southeast Bay of Bengal (BoB) & neighbourhood moved north-northwestwards during past 24 hours and lay centred at 0830 hrs IST of today, the 29th April 2019 near latitude 8.7°N and longitude 86.9°E over the same region about 620 km east of Trincomalee (Sri Lanka), 870 km east-southeast of Chennai (Tamil Nadu) and 1040 km south-southeast of Machilipatnam (Andhra Pradesh).

It is very likely to intensify into a **severe cyclonic storm** during next 06 hours and into a **very severe cyclonic storm** during subsequent 24 hours. **It is very likely to move northwestwards till 01st May evening and thereafter recurve north-northeastwards gradually.**

Forecast track and intensity are given in the following table:

Date/Time(IST)	Position (Lat. °N/ long. °E)	Maximum sustained surface wind speed (Kmph)	Category of cyclonic disturbance
29.04.19/0830	8.7/86.9	80-90 gusting to 100	Cyclonic Storm
29.04.19/1130	9.3/86.6	85-95 gusting to 110	Cyclonic Storm
29.04.19/1730	10.0/86.3	95-105 gusting to 120	Severe Cyclonic Storm
29.04.19/2330	10.5/86.0	110-120 gusting to 135	Severe Cyclonic Storm
30.04.19/0530	11.0/85.6	120-130 gusting to 145	Very Severe Cyclonic Storm
30.04.19/1730	11.9/84.8	130-140 gusting to 155	Very Severe Cyclonic Storm
01.05.19/0530	12.5/84.0	150-160 gusting to 175	Very Severe Cyclonic Storm
01.05.19/1730	13.1/83.7	160-170 gusting to 185	Very Severe Cyclonic Storm
02.05.19/0530	13.7/83.8	170-180 gusting to 195	Extremely Severe Cyclonic Storm
02.05.19/1730	14.5/84.0	170-180 gusting to 195	Extremely Severe Cyclonic Storm
03.05.19/0530	15.5/84.3	165-175 gusting to 190	Extremely Severe Cyclonic Storm
03.05.19/1730	16.5/84.7	160-170 gusting to 185	Extremely Severe Cyclonic Storm
04.05.19/0530	17.5/85.1	155-165 gusting to 180	Very Severe Cyclonic Storm

Warnings:

(i) Heavy rainfall warning

- Light to moderate rainfall at many places with heavy falls at isolated places very likely over Kerala on 29th & 30th April, 2019. Light to moderate rainfall at a few places over north coastal Tamil Nadu & south coastal Andhra Pradesh on 29th & 30th April, 2019.

Contact: Cyclone Warning Division, Office of the Director General of Meteorology, India Meteorological Department, Ministry of Earth Sciences.

Phone: (91) 11-24652484, FAX: (91) 11-24643128, 24623220, E-mail: cwdhq2008@gmail.com, Website: rsmcnewdelhi.imd.gov.in

Spatial rainfall distribution: Isolated: <25%, A few: 26-50%, Many: 51-75%, Most: 76-100%

Rainfall amount (mm): Heavy rain: 64.5 – 115.5, Very heavy rain: 115.6 – 204.4, Extremely heavy rain: 204.5 or more.

- Light to moderate rainfall at few places very likely over north coastal Andhra Pradesh & south coastal Odisha on 2nd May. It is likely to increase in intensity with heavy to very heavy rainfall at isolated places over coastal Odisha & adjoining districts of north coastal Andhra Pradesh from 3rd May. Light to moderate rainfall at many places with heavy falls at isolated places also very likely to commence over coastal districts of West Bengal from 3rd May.

(ii) Wind warning

- Gale wind speed reaching 80-90 kmph gusting to 100 kmph is prevailing over southeast BoB & neighbourhood. It is very likely to increase gradually becoming 120-130 kmph gusting to 145 kmph over Southwest Bay of Bengal from 30th morning and 160-170 kmph gusting to 185 kmph over southwest & adjoining westcentral Bay of Bengal off north Tamilnadu, Puducherry and south Andhra Pradesh Coasts from 01st May evening.
- Strong wind speed reaching 30-40 kmph gusting to 50 kmph very likely along & off Tamilnadu & Puducherry coast, Comorin area and Gulf of Mannar on today the 29th April, becoming squally wind speed reaching 40-50 kmph gusting to 60 kmph from 30th morning. It is very likely to become squally wind speed reaching 50-60 kmph gusting to 70 kmph from 30th evening along north Tamilnadu, Puducherry and south Andhra Pradesh Coasts.
- Strong wind speed reaching 30-40 kmph gusting to 50 kmph very likely along & off Kerala coast on today the 29th April and becoming squally wind speed reaching 40-50 kmph gusting to 60 kmph on 30th.
- Squally wind speed reaching 40-50 kmph gusting to 60 kmph is very likely to commence along & off north Andhra Pradesh & Odisha Coasts from 2nd May and likely to become 50-60 kmph gusting to 70 kmph from 3rd May onwards over the same area.

(iii) Sea condition

- The sea condition is very high over southeast BoB & neighbourhood. It is likely to become phenomenal over southwest & adjoining westcentral BoB off north Tamilnadu, Puducherry and south Andhra Pradesh coasts from 30th morning and over westcentral BoB off Andhra Pradesh Coast during 1-3 May 2019.
- Sea condition is very likely to be rough to very rough along & off Puducherry, Tamilnadu and south Andhra Pradesh coasts till 1st May 2019, along & off north Andhra Pradesh coasts on 1-3 May and along & off Odisha coast from 2nd May onwards.

(iv) Fishermen Warning

- The fishermen are advised not to venture into deep sea areas of southeast BoB & adjoining Equatorial Indian Ocean, southwest BoB and off Sri Lanka coast on today the 29th April; southwest & adjoining westcentral BoB along & off Sri Lanka, Puducherry, Tamilnadu & south Andhra Pradesh coasts till 1st May, westcentral BoB along & off north Andhra Pradesh coast during 1st-3rd May 2019 and northwest & adjoining westcentral BoB along & off Odisha coast from 2nd May onwards.
- Those, who are out in deep sea in above areas are advised to return to the coasts.

The system is under continuous surveillance and concerned state governments are being informed regularly.

Kindly visit www.imd.gov.in and www.rsmcnewdelhi.imd.gov.in for updates on the system.

Contact: Cyclone Warning Division, Office of the Director General of Meteorology,
India Meteorological Department, Ministry of Earth Sciences.

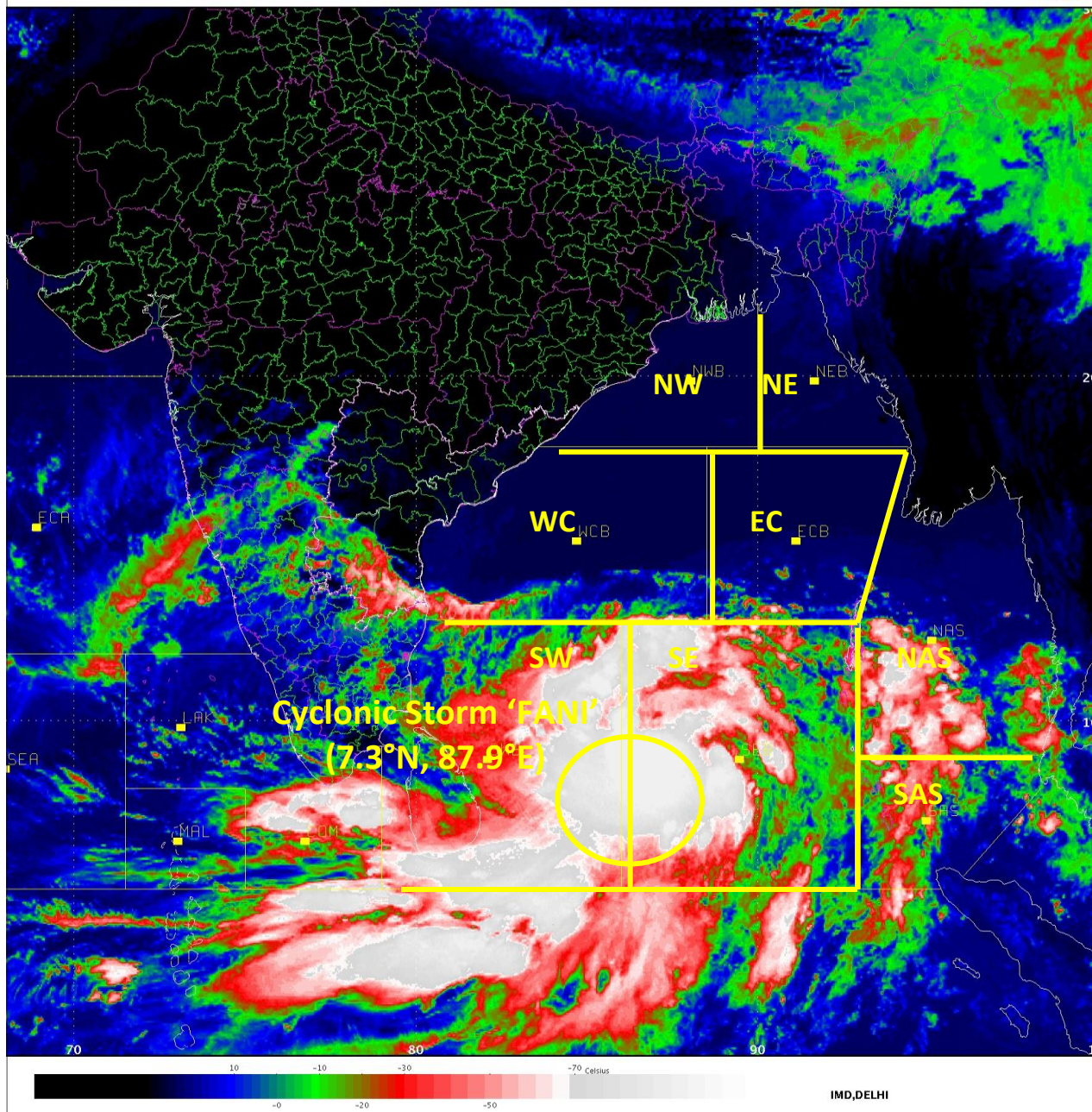
Phone: (91) 11-24652484, FAX: (91) 11-24643128, 24623220, E-mail: cwdhq2008@gmail.com, Website: rsmcnewdelhi.imd.gov.in

Spatial rainfall distribution: Isolated: <25%, A few: 26-50%, Many: 51-75%, Most: 76-100%

Rainfall amount (mm): Heavy rain: 64.5 – 115.5, Very heavy rain: 115.6 – 204.4, Extremely heavy rain: 204.5 or more.

SAT :INSAT-3D
IMG_TIR1_TEMP 10.8 um
SECTOR BAYOFBENGAL Mercator (NHC LUT)

29-04-2019/03:30 GMT
29-04-2019/09:00 IST



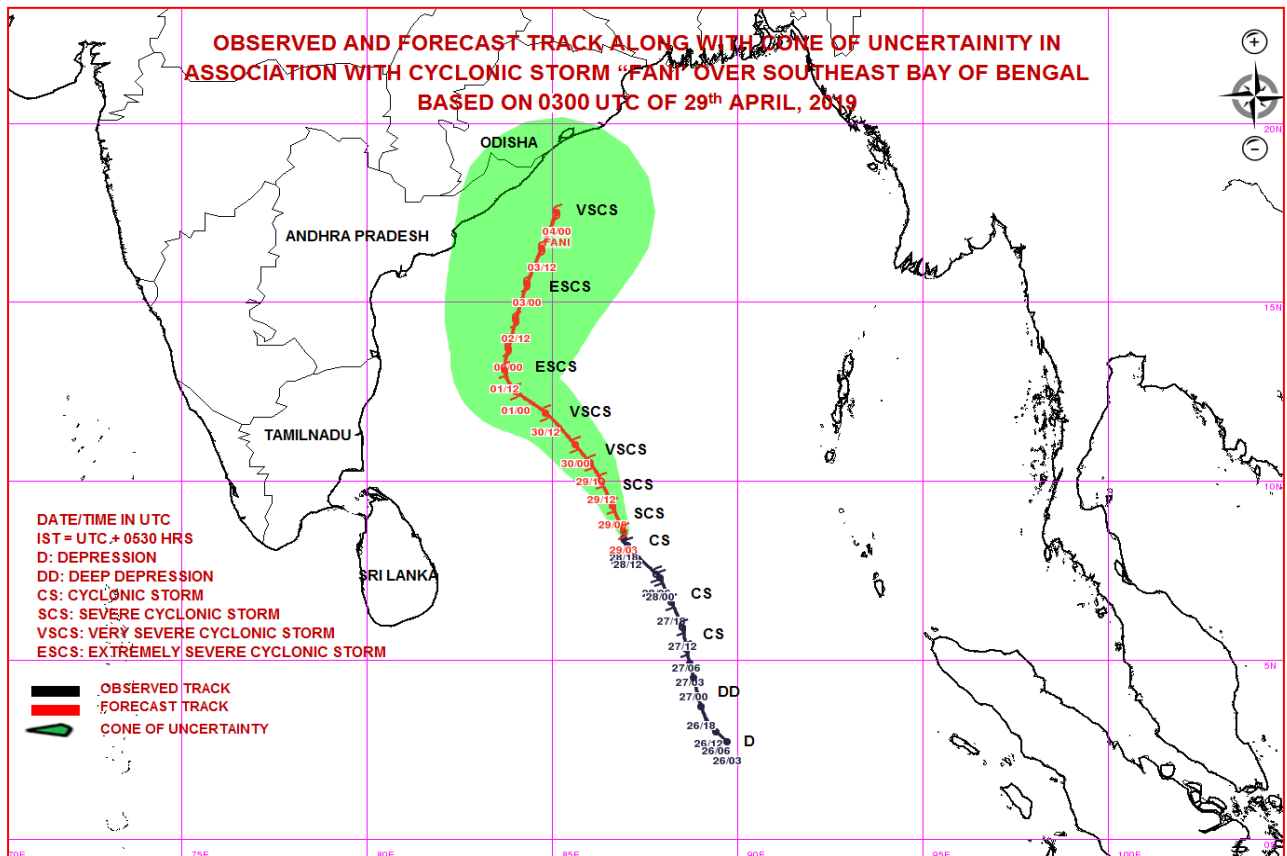
Contact: Cyclone Warning Division, Office of the Director General of Meteorology,
India Meteorological Department, Ministry of Earth Sciences.

Phone: (91) 11-24652484, FAX: (91) 11-24643128, 24623220, E-mail: cwdhq2008@gmail.com, Website: rsmcnewdelhi.imd.gov.in

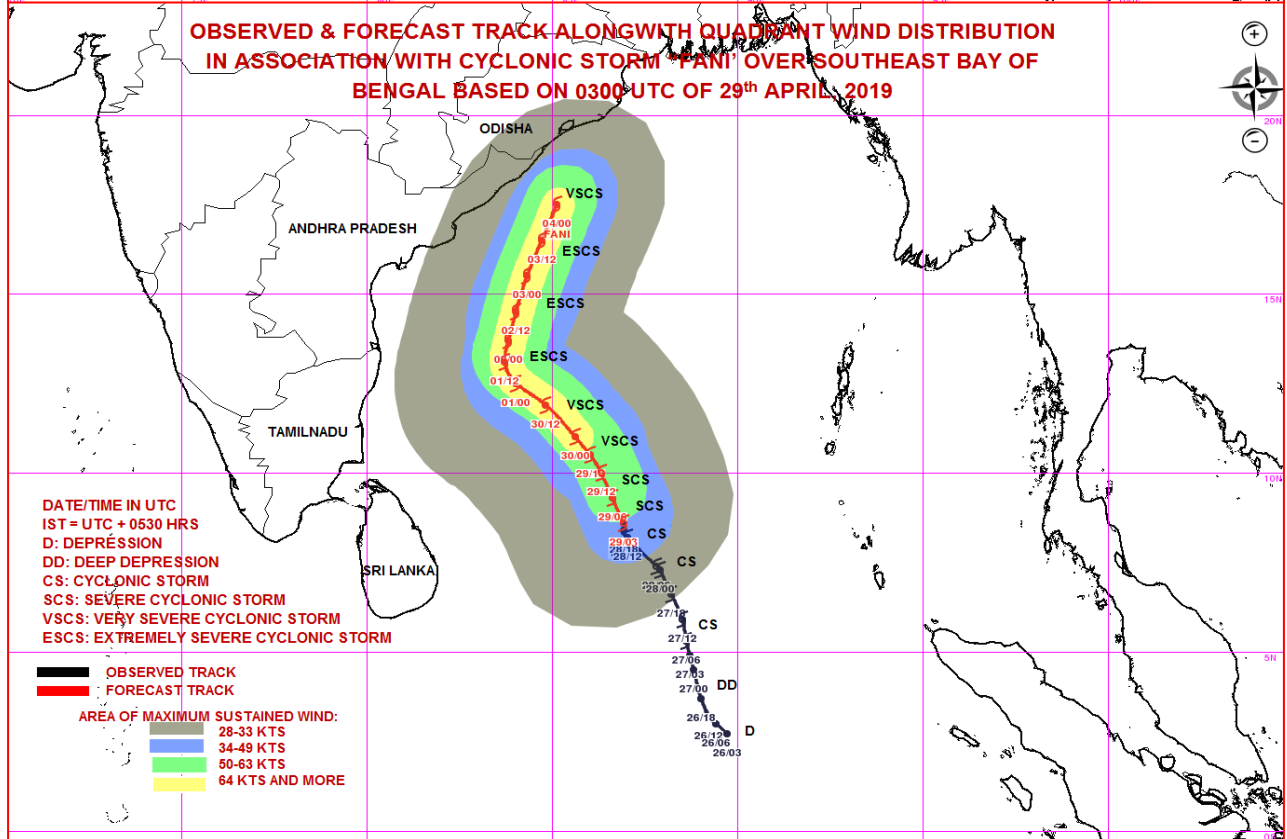
Spatial rainfall distribution: Isolated: <25%, A few: 26-50%, Many: 51-75%, Most: 76-100%

Rainfall amount (mm): Heavy rain: 64.5 – 115.5, Very heavy rain: 115.6 – 204.4, Extremely heavy rain: 204.5 or more.

OBSERVED AND FORECAST TRACK ALONG WITH CONE OF UNCERTAINTY IN ASSOCIATION WITH CYCLONIC STORM "FANI" OVER SOUTHEAST BAY OF BENGAL BASED ON 0300 UTC OF 29th APRIL, 2019



OBSERVED & FORECAST TRACK ALONG WITH QUADRANT WIND DISTRIBUTION IN ASSOCIATION WITH CYCLONIC STORM "FANI" OVER SOUTHEAST BAY OF BENGAL BASED ON 0300 UTC OF 29th APRIL, 2019



MSW(knot)/kmph)	Impact	Action
28-33 /(51-62)	Very rough seas.	Total suspension of fishing operations
34-49/(63-91)	High to very high seas	Total suspension of fishing operations
50-63/(92-117)	Very High seas	Total suspension of fishing operations
≥ 64 (≥118)	Phenomenal	Total suspension of fishing operations

Contact: Cyclone Warning Division, Office of the Director General of Meteorology, India Meteorological Department, Ministry of Earth Sciences.

Phone: (91) 11-24652484, FAX: (91) 11-24643128, 24623220, E-mail: cwdhq2008@gmail.com, Website: rsmcnewdelhi.imd.gov.in

Spatial rainfall distribution: Isolated: <25%, A few: 26-50%, Many: 51-75%, Most: 76-100%

Rainfall amount (mm): Heavy rain: 64.5 – 115.5, Very heavy rain: 115.6 – 204.4, Extremely heavy rain: 204.5 or more.