



இந்திய அரசு
இந்திய வானிலை ஆய்வு துறை
மண்டல வானிலை ஆய்வு மையம்
6, கல்லூரி சாலை,
சென்னை-600006
தொலைபேசி : 044- 28271951



GOVERNMENT OF INDIA
INDIA METEOROLOGICAL DEPARTMENT
Regional Meteorological Centre
No. 6, College Road,
Chennai-600006
Phone: 044- 28271951

DATE: Sunday, October 6, 2024 (14 Asvina 1946)

Time of issue: 1300 Hrs IST

DAILY WEATHER REPORT FOR TAMILNADU, PUDUCHERRY & KARAIKAL AREA

Summary of observations over Tamil Nadu, Puducherry and Karaikal recorded at 0830 hrs IST:
Southwest Monsoon has been active over North Tamilnadu.

Rainfall occurred at many places over Tamilnadu (at a many places over North Tamilnadu and at few places over South Tamilnadu), Puducherry and Karaikal area.

CHIEF AMOUNT OF RAINFALL IN CENTIMETERS: Vadakuthu (dist Cuddalore), Sivagangai PWD TB (dist Sivagangai) 13 each; Rasipuram (dist Namakkal) 12; Salem (dist Salem) 11; Tirumayam (dist Pudukkottai), Alangudi (dist Pudukkottai) 9 each; Pudukkottai (dist Pudukkottai), Vanamadevi (dist Cuddalore), Anaimaduvu Dam (dist Salem) 8 each; udalur Bazar (dist The Nilgiris), Upper Gudalur (dist The Nilgiris), Pamban (dist Ramanathapuram), Vazhapadi ARG (dist Salem), Perungalur (dist Pudukkottai), Avudayarkoil (dist Pudukkottai), Tirupathur (dist Sivagangai) 7 each; Gandarvakottai (dist Pudukkottai), Namakkal AWS (dist Namakkal), Yercaud (dist Salem), Karaikudi (dist Sivagangai), Sandhiyur KVK AWS (dist Salem), Kodanad (dist The Nilgiris), Taluk Office Pandalur (dist The Nilgiris) 6 each; Lower Anaicut (dist Thanjavur), Hogenekal (dist Dharmapuri), Tirupattur (dist Tirupathur), Mangalapuram (dist Namakkal), Kil Kotagiri Estate (dist The Nilgiris), Pambar Dam (dist Krishnagiri), DC Office Tiruppur (dist Tiruppur), Krishnagiri (dist Krishnagiri), SRC Kudithangi (dist Cuddalore), Danishpet (dist Salem), Pappireddipatti (dist Dharmapuri), Panruti (dist Cuddalore) 5 each; Vilupuram (dist Villupuram), Attur (dist Salem), Uthangarai (dist Krishnagiri), Palacode ARG (dist Dharmapuri), Tiruppur AWS (dist Tiruppur), Musiri (dist Thiruchirappalli), Erumapatti (dist Namakkal), Tirupathur PTO (dist Tirupathur), Harur (dist Dharmapuri), Pennagaram (dist Dharmapuri), Budalur (dist Thanjavur), Arantangi (dist Pudukkottai) 4 each; Glenmorgan (dist The Nilgiris), Barwood (dist The Nilgiris), Thaniamangalam (dist Madurai), Thirumanur (dist Ariyalur), Theerthandathanam (dist Ramanathapuram), Arimalam (dist Pudukkottai), Naduvattam (dist The Nilgiris), Karaiyur (dist Pudukkottai), Adanakkotai (dist Pudukkottai), Denkanikottai (dist Krishnagiri), RSCL-2 Koliyanur (dist Villupuram), Tiruppur North (dist Tiruppur), Tiruppur North (dist Tiruppur), Kariyakovil Dam (dist Salem), Thondamuthur (dist Coimbatore), Lakkur (dist Cuddalore), Vedaranyam (dist Nagapattinam), Nagudi (dist Pudukkottai), Suthamalli Dam (dist Ariyalur), Devakottai (dist Sivagangai), Maduranthagam (dist Chengalpattu), Thenparanadu (dist Thiruchirappalli), Kurinjipadi (dist Cuddalore), RSCL-2 Valavanur (dist Villupuram), Virudhunagar (dist Virudhunagar), Perambalur AWS (dist Perambalur), Tiruvaiyaru (dist Thanjavur), Natham (dist Dindigul), Tondi (dist Ramanathapuram), Kilanilai (dist Pudukkottai), R.S. Mangalam (dist Ramanathapuram), Puduchatram (dist Namakkal), Wood Braiyar Estate (dist The Nilgiris), Bhavani (dist Erode), Tiruppur South (dist Tiruppur), Pulipatti (dist Madurai), Pandavaiyar Head (dist Thiruvarur), Singampunari (dist Sivagangai), Palacode (dist Dharmapuri), Uppar Dam (dist Tiruppur), Orthanad (dist Thanjavur), Thali (dist Krishnagiri),

Harisan Malayalam Ltd. (dist The Nilgiris), Palani (dist Dindigul), Kayalpattinam (dist Thoothukudi), Natham AWS (dist Dindigul), Natrampalli (dist Tirupathur) 3 each; Vattanam (dist Ramanathapuram), Nedungal (dist Krishnagiri), Veeraganoor (dist Salem), Jamunamarathur (dist Tiruvannamalai), Sethu Bhaskar Agri College AWS (dist Sivagangai), Vettikadu (dist Thanjavur), SCS Mill Arasoor (dist Villupuram), Vanur (dist Villupuram), Kallikudi (dist Madurai), Kudimiyamalai (dist Pudukkottai), Thiruvaidaimaruthur (dist Thanjavur), Kodiayakarai (dist Nagapattinam), Vamban KVKAWS (dist Pudukkottai), Vaniyambadi (dist Tirupathur), Poonamallee (dist Tiruvallur), Devala (dist The Nilgiris), Pattukottai (dist Thanjavur), Karur AWS (dist Karur), Ayinkudi (dist Pudukkottai), TCS Mill Kethandapatti (dist Tirupathur), Amaravathy Dam (dist Tiruppur), Paramakudi (dist Ramanathapuram), Melalathur (dist Vellore), SCS Mill Thiruvannainal (dist Villupuram), Tnau Cri Yethapur (dist Salem), Thuraiyur (dist Thiruchirappalli), Nkl Collectorate (dist Namakkal), Thanjai Papanasam (dist Thanjavur), Elanthakuttai Medu (dist Erode), Kalavai PWD (dist Ranipet), Thalavadi (dist Erode), Alangayam (dist Tirupathur), Kothavacherry (dist Cuddalore), Thammampatty (dist Salem), Tozhudur (dist Cuddalore), RSCL-2 Soorapattu (dist Villupuram), Satyabama Uty ARG (dist Kancheepuram), Pilavakkal Periyar Dam (dist Virudhunagar), Chengam (dist Tiruvannamalai), Mannargudi (dist Thiruvarur), Rayakottah (dist Krishnagiri), Me Mathur (dist Cuddalore), Walajabad (dist Kancheepuram), Uthagamandalam (dist The Nilgiris), Needamangalam (dist Thiruvarur), Omalur (dist Salem), Ayyampettai (dist Thanjavur), Sattur (dist Virudhunagar) 2 each; PWD Vaarappatti (dist Coimbatore), Pullambadi (dist Thiruchirappalli), Marandahalli (dist Dharmapuri), Koppampatti (dist Thiruchirappalli), Nctpl Marg ECR AWS (dist Chengalpattu), Vallam (dist Thanjavur), Periyanaickenpalayam (dist Coimbatore), KCS Mill-2 Moorarpalayam (dist Kallakurichi), Nandhiyar Head (dist Thiruchirappalli), Palani AWS (dist Dindigul), Jambukuttapatti (dist Krishnagiri), Sholinganallur (dist Chennai), Pochampalli ARG (dist Krishnagiri), Tiruvannamalai (dist Tiruvannamalai), Tirukattupalli (dist Thanjavur), Coonoor (dist The Nilgiris), Emeralad (dist The Nilgiris), Mohanur (dist Namakkal), Thathiengrpet (dist Thiruchirappalli), Pillur Dam Mettupalayam (dist Coimbatore), Avinasi (dist Tiruppur), RSCL-2 Mundiampakkam (dist Villupuram), Neivasal Thenpathi (dist Thanjavur), Udayalipatti (dist Pudukkottai), Mudukulatur (dist Ramanathapuram), Keeranur (dist Pudukkottai), Vepur (dist Cuddalore), Muthupet (dist Thiruvarur), Eraiyur (dist Perambalur), Manamadurai (dist Sivagangai), Aravakurichi (dist Karur), Adirampatnam (dist Thanjavur), Adiramapattinam (dist Thanjavur), Hosur (dist Krishnagiri), Aduthurai AWS (dist Thanjavur), Manamelkudi (dist Pudukkottai), Tiruchengode (dist Namakkal), Kalasapakkam (dist Tiruvannamalai), RSCL-2 Kanjanur (dist Villupuram), Kodaikannal Boat Club (dist Dindigul), Tiruvadana (dist Ramanathapuram), Anjatti (dist Krishnagiri), Tambaram (dist Chengalpattu), Tiruppur IB PWD (dist Tiruppur), Tiruchirappalli Airport (dist Thiruchirappalli), Navalur Kottapattu (dist Thiruchirappalli), Ponnaniyar Dam (dist Thiruchirappalli), KRP Dam (dist Krishnagiri), Penucondapuram (dist Krishnagiri), Kovilpatty (dist Thiruchirappalli), RSCL-2 Nemoor (dist Villupuram), Sankarapuram (dist Kallakurichi), Coonoor PTO (dist The Nilgiris), Melur (dist Madurai), Hosur AWS (dist Krishnagiri), Kothagiri (dist The Nilgiris), Kuruvadi (dist Ariyalur), Subramania Siva Co.Op Sugar Mill (dist Dharmapuri), Shanthi Vijaya School (dist The Nilgiris), Viralimalai (dist Pudukkottai), Uthukottai (dist Tiruvallur), Kumarapalayam (dist Namakkal), Kangeyam (dist Tiruppur), Kelavarapalli Dam (dist Krishnagiri), Vint Worth Estate (dist The Nilgiris), Alakarai Estate (dist The Nilgiris), Sendamangalam (dist Namakkal), Bhavanisagar (dist Erode), Kariyapatti (dist Virudhunagar), Illuppur (dist Pudukkottai), Annavasal (dist Pudukkottai), Dharmapuri PTO (dist Dharmapuri), V. Kalathur (dist Perambalur), Thanjavur PTO (dist Thanjavur), Thanjavur (dist Thanjavur), Marakkanam (dist Villupuram), Upper Bhavani (dist The Nilgiris), Vedharanyam AWS (dist Nagapattinam) 1 each.

DESCRIPTION OF TEMPERATURE: (in the plains)

Chennai (Nungambakkam) recorded the highest maximum temperature of **35.6°C**.

Erode recorded the lowest minimum temperature of **17.5°C**.

Synoptic Meteorological Features:

Yesterday's **upper air cyclonic circulation** over westcentral Bay of Bengal off Andhra Pradesh coasts now lies over southwest & adjoining westcentral Bay of Bengal off north Tamil Nadu-south Andhra Pradesh coasts between 1.5 km to 5.8 km above mean sea level tilting southwestwards with height.

A **trough** runs from southeast Arabian Sea to Rayalaseema across north Kerala & South Interior Karnataka at 0.9 km above mean sea level.

FORECAST & WARNINGS FOR TAMILNADU AND PUDUCHERRY FOR NEXT SEVEN DAYS

Day 1 (06.10.2024)	Light to moderate rain at many places with Thunderstorm and lightning at one or two places is likely to occur over Tamilnadu, Puducherry and Karaikal area. Heavy to very heavy rain is likely to occur at isolated places over Nilgiris, Coimbatore, Erode, Tiruppur and Namakkal districts. Heavy rain is likely to occur at isolated places over Salem, Perambalur, Tiruchirappalli, Pudukkottai, Karur, Dindigul, Virudhunagar, Theni, Madurai, Tenkasi and Sivaganga districts.
Day 2 (07.10.2024)	Light to moderate rain at many places with Thunderstorm and lightning at one or two places is likely to occur over Tamilnadu, Puducherry and Karaikal area. Heavy rain is likely to occur at isolated places over Nilgiris, Coimbatore, Tiruppur, Theni, Dindigul, Tenkasi, Tirunelveli, Virudhunagar, Kanyakumari, Erode, Thanjavur, Tiruvarur, Mayiladuthurai, Nagapattinam & Pudukkottai districts and Karaikal area.
Day 3 (08.10.2024)	Light to moderate rain at most places with Thunderstorm and lightning at one or two places is likely to occur over Tamilnadu, Puducherry and Karaikal area. Heavy rain is likely to occur at isolated places over Nilgiris, Coimbatore, Tiruppur, Theni, Dindigul, Tenkasi, Tirunelveli, Kanyakumari, Erode, Karur, Virudhunagar, Thoothukudi, Ramanathapuram, Pudukkottai, Thanjavur, Nagapattinam, Tiruvarur & Mayiladuthurai districts and Karaikal area.
Day 4 (09.10.2024)	Light to moderate rain at most places with Thunderstorm and lightning at one or two places is likely to occur over Tamilnadu, Puducherry and Karaikal area. Heavy rain is likely to occur at isolated places over Nilgiris, Coimbatore, Tiruppur, Theni, Dindigul, Tenkasi, Tirunelveli, Kanyakumari, Madurai, Virudhunagar, Ramanathapuram, Thoothukudi, Pudukkottai, Sivaganga, Mayiladuthurai, Thanjavur, Tiruvarur, Nagapattinam & Cuddalore districts, Puducherry and Karaikal area.
Day 5 (10.10.2024)	Light to moderate rain at many places with Thunderstorm and lightning at one or two places is likely to occur over Tamilnadu, Puducherry and Karaikal area. Heavy rain is likely to occur at isolated places over Nilgiris, Coimbatore, Tiruppur, Theni, Dindigul, Tirunelveli, Virudhunagar, Tenkasi, Kanyakumari, Thoothukudi and Ramanathapuram districts.
Outlook for subsequent two days	

Day 6 (11.10.2024)	Light to moderate rain is likely to occur at many places over Tamilnadu, Puducherry and Karaikal area. Heavy rain is likely to occur at isolated places over Nilgiris, Coimbatore, Tiruppur, Theni, Dindigul, Tenkasi, Tirunelveli, Virudhunagar and Kanyakumari districts.
Day 7 (12.10.2024)	Light to moderate rain is likely to occur at many places over Tamilnadu, Puducherry and Karaikal area.

HEAVY RAINFALL WARNING

Day 1 (06.10.2024)	Heavy to very heavy rain is likely to occur at isolated places over Nilgiris, Coimbatore, Erode, Tiruppur and Namakkal districts.
	Heavy rain is likely to occur at isolated places over Salem, Perambalur, Tiruchirappalli, Pudukkottai, Karur, Dindigul, Virudhunagar, Theni, Madurai, Tenkasi and Sivaganga districts.
Day 2 (07.10.2024)	Heavy rain is likely to occur at isolated places over Nilgiris, Coimbatore, Tiruppur, Theni, Dindigul, Tenkasi, Tirunelveli, Virudhunagar, Kanyakumari, Erode, Thanjavur, Tiruvarur, Mayiladuthurai, Nagapattinam & Pudukkottai districts and Karaikal area.
Day 3 (08.10.2024)	Heavy rain is likely to occur at isolated places over Nilgiris, Coimbatore, Tiruppur, Theni, Dindigul, Tenkasi, Tirunelveli, Kanyakumari, Erode, Karur, Virudhunagar, Thoothukudi, Ramanathapuram, Pudukkottai, Thanjavur, Nagapattinam, Tiruvarur & Mayiladuthurai districts and Karaikal area.
Day 4 (09.10.2024)	Heavy rain is likely to occur at isolated places over Nilgiris, Coimbatore, Tiruppur, Theni, Dindigul, Tenkasi, Tirunelveli, Kanyakumari, Madurai, Virudhunagar, Ramanathapuram, Thoothukudi, Pudukkottai, Sivaganga, Mayiladuthurai, Thanjavur, Tiruvarur, Nagapattinam & Cuddalore districts, Puducherry and Karaikal area.
Day 5 (10.10.2024)	Heavy rain is likely to occur at isolated places over Nilgiris, Coimbatore, Tiruppur, Theni, Dindigul, Tirunelveli, Virudhunagar, Tenkasi, Kanyakumari, Thoothukudi and Ramanathapuram districts.
Day 6 (11.10.2024)	Heavy rain is likely to occur at isolated places over Nilgiris, Coimbatore, Tiruppur, Theni, Dindigul, Tenkasi, Tirunelveli, Virudhunagar and Kanyakumari districts.

THUNDERSTORM WARNING

Day 1 (06.10.2024) to Day 5 (10.10.2024)	Thunderstorm with lightning is likely to occur at one or two places over Tamilnadu, Puducherry and Karaikal area.
--	---

LOCAL FORECAST FOR CHENNAI CITY AND NEIGHBOURHOOD

For next 24 hours	Sky condition is likely to be partly cloudy. Light/moderate rain with thunderstorm & lightning is likely to occur in some areas. Maximum temperature is likely to be 35-36°C and Minimum temperature is likely to be 26-27°C.
For next 48 hours	Sky condition is likely to be partly cloudy. Light/moderate rain with thunderstorm & lightning is likely to occur in some areas. Maximum temperature is likely to be 35-36°C and Minimum temperature is likely to be 26-27°C.

P. SENTHAMARAI KANNAN
SCIENTIST 'F'
For Deputy Director General of Meteorology,
Regional Meteorological Centre, Chennai.

OBSERVATIONS RECORDED AT 0830 HRS IST OF DATE:06-10-2024 (14 Asvina 1946 SAKA)

Stations	Temperature Degrees celsius				Humidity percentage		Rainfall					Weather remarks
	Maximum		Minimum		At 0830 Hrs IST	Dep. from normal	Millimeters			Centimeters		
	Past 24 Hrs	Dep. from normal	Past 24 Hrs	Dep. from normal			Past 24 Hrs	Seasons total from	Departure from normal	Year's total from	Annual normal	
	°C	°C	°C	°C	%	%	mm	1-10-2024	mm	1-1-2024	cm	
Adiramapattinam	33.9	1.0	23.7	-1.3	100	23	11.7	50.5	16.1	61	124	r*
Chennai	35.6	2.1	26.8	1.2	74	-7	2.7	18.7	-15.5	80	140	r*
Chennai_AP	35.5	2.0	25.8	0.7	74	-5	0.6	0.8	-36.1	83	138	r*
Coimbatore_AP	33.6	1.5	23.6	1.2	84	4	0.6	3.6	-13.2	35	59	r*
Coonor	22.0	-0.2	15.5	1.3	93	14	10.2	31.8	-10.9	117	159	r*
Cuddalore	31.6	-1.5	22.8	-2.0	96	14	2.2	61.8	29.9	70	134	r*
Dharmapuri	30.0	-1.2	22.5	0.3	95	14	8.0	56.0	18.8	59	91	r*
Erode	33.6	-0.5	17.5	-4.9	91	19	4.4	44.0	--	45	--	r*
Kanyakumari	32.8	1.9	25.6	1.1	79	2	0.0	12.8	-3.3	60	75	
KarurParamathi	33.5	1.4	20.5	-3.0	76	-4	1.2	66.2	46.5	56	59	r*
Karaikal	32.6	-0.6	24.9	-0.4	93	14	3.2	24.4	0.6	53	150	r*
Kodaikanal	19.6	1.1	12.5	0.9	100	18	3.0	6.9	-31.2	101	158	r*
Madurai_City	31.8	-1.7	22.0	-1.6	80	8	1.8	47.3	--	48	--	r*
Madurai_AP	34.4	-0.3	25.3	0.9	90	19	0.1	69.1	46.2	41	85	m*
Nagapattinam	34.0	0.8	26.1	0.7	90	9	0.0	7.9	-13.0	53	143	
Namakkal	33.4	--	22.4	--	84	--	NA	--	--	--	--	
Palayamkottai	32.7	-1.7	26.3	1.3	78	8	0.0	0.0	-12.3	37	73	
Pamban	31.3	-1.5	23.4	-3.0	100	22	69.5	148.7	134.1	51	91	r*
Parangipettai	34.0	--	24.5	--	98	--	1.2	31.1	8.0	49	139	r*
Puducherry	33.5	0.2	25.0	0.1	86	2	1.0	7.1	-39.2	79	134	r*
Salem	32.7	-0.1	21.8	-1.0	90	10	108.5	114.8	76.7	89	102	z*
Thanjavur	35.0	--	25.2	--	89	--	8.0	21.2	-11.2	33	95	r*
Thirupattur	28.2	-3.2	22.6	0.2	85	2	38.8	125.4	96.5	80	95	r*
Tiruchirappalli_AP	34.3	0.1	24.0	-0.8	97	21	10.5	66.2	40.6	56	87	r*
Tiruthani	35.5	3.1	24.6	1.0	85	6	6.4	6.4	-23.1	80	101	r*
Tondi	30.9	-1.9	21.5	-3.7	96	20	26.8	46.0	27.0	64	88	r*
Thoothukudi	32.0	-1.4	26.5	1.5	291	214	0.0	8.4	-0.6	29	63	
Udagamandalam	20.1	1.5	13.6	3.1	92	5	16.4	18.2	-11.0	94	116	r*
Valparai	26.0	0.3	17.0	0.5	93	4	1.0	44.2	2.7	356	290	r*
Vellore	33.0	-0.2	25.0	1.5	84	2	tr	57.4	28.4	79	103	d*

*Weather at 0830 hours IST. Other remarks refer to preceding 24 hours. NA-Not avble D-Duststorm l-Lightning d-drizzle m-mist s-snow r-rain h-hail f-fog p-shower z-haze t-thunderstorm tr-rainfall not measurable. Tr-rainfall 0.01 to 0.49 cm AP-Airport plus sign omitted when departures above normal.

GOVERNMENT OF INDIA, MINISTRY OF EARTH SCIENCES

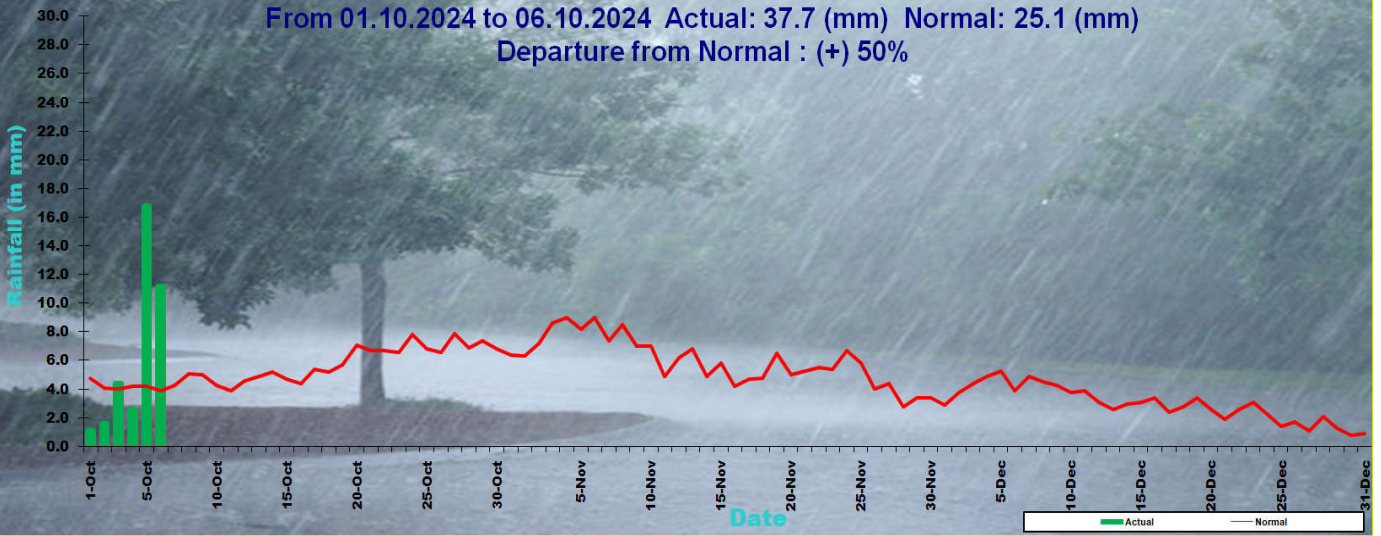
INDIA METEOROLOGICAL DEPARTMENT

REGIONAL METEOROLOGICAL CENTRE, CHENNAI

Districtwise daily / seasonal rainfall distribution for Tamil Nadu & Puducherry

NORTHEAST MONSOON RAINFALL 2024		06.10.2024			From 01.10.2024 to 06.10.2024		
CODE	NAME	ACTUAL in mm**	NORMAL in mm	PDN*	ACTUAL in mm	NORMAL in mm	PDN*
	STATES						
31	TAMIL NADU	11.2	3.9	189	37.8	25.1	51
	MET. SUBDIVISIONS						
31	TAMIL NADU & PUDUCHERRY						
534	ARIYALUR	10.5	6.1	71	59.9	24.0	149
687	CHENGALPATTU	5.6	4.4	26	12.4	30.5	-59
461	CHENNAI	1.5	6.1	-76	4.5	36.5	-88
462	COIMBATORE	3.7	2.6	44	15.6	22.8	-32
463	CUDDALORE	16.3	4.6	253	66.8	25.0	167
464	DHARMAPURI	27.5	5.5	400	57.1	34.3	66
465	DINDIGUL	8.3	3.1	166	21.8	27.5	-21
466	ERODE	6.4	3.1	106	22.9	24.6	-7
688	KALLAKURICHI	0.8	4.7	-84	43.6	27.7	57
467	KANCHEEPURAM	3.7	4.0	-7	3.8	34.8	-89
468	KANYAKUMARI	0.1	7.2	-99	47.6	36.0	32
636	KARAIKAL	3.2	5.9	-46	24.4	23.8	3
469	KARUR	3.2	2.4	33	30.1	17.5	72
470	KRISHNAGIRI	19.0	5.3	258	64.4	36.5	76
471	MADURAI	4.9	3.2	52	24.6	24.7	0
695	MAYILADUTHURAI	0.0	5.7	-100	38.9	24.6	58
472	NAGAPATTINAM	7.7	4.2	84	11.6	21.3	-46
473	NAMAKKAL	27.7	4.1	576	65.4	22.7	188
474	NILGIRIS	20.6	5.0	312	33.6	32.6	3
475	PERAMBALUR	1.8	6.0	-70	16.2	22.4	-28
476	PUDUCHERRY	1.0	7.9	-87	7.1	46.3	-85
477	PUDUKKOTTAI	31.8	3.5	810	73.4	21.4	243
478	RAMANATHAPURAM	12.4	1.8	588	43.0	17.4	147
689	RANIPET	2.2	5.5	-59	13.8	27.9	-51
479	SALEM	31.8	5.2	511	58.8	30.4	94
480	SIVAGANGA	37.1	3.1	1096	59.1	24.6	140
690	TENKASI	0.1	1.9	-95	2.9	14.5	-80
481	THANJAVUR	15.0	3.8	295	44.1	24.2	82
482	THENI	1.2	1.8	-35	6.8	21.6	-69
483	TIRUNELVELI	0.0	1.6	-100	9.4	11.0	-14
691	TIRUPATTUR	19.4	4.8	305	127.0	29.7	328
535	TIRUPPUR	8.5	2.0	326	33.9	21.0	62
484	TIRUVALLUR	2.1	5.5	-61	9.9	30.3	-67
485	TIRUVANNAMALAI	6.2	6.9	-10	56.5	32.7	73
486	TIRUVARUR	9.4	3.6	160	23.8	24.5	-3
488	TOOTHUKUDI	1.4	1.7	-17	6.4	10.1	-37
487	TRICHY	8.4	3.3	156	38.9	25.0	56
489	VELLORE	2.9	7.0	-58	49.6	30.0	65
490	VILLUPURAM	11.6	4.8	141	72.3	30.0	141
491	VIRUDHUNAGAR	5.5	2.1	161	11.1	18.2	-39
	SUBDIVISION RAINFALL	11.2	3.9	187	37.7	25.1	50
LEGEND	PDN*	Percentage Departure from Normal					
	**	Rainfall for the 24 hrs ending at 0830 hrs of date					

Northeast Monsoon Rainfall 2024 for Tamilnadu and Puducherry
 From 01.10.2024 to 06.10.2024 Actual: 37.7 (mm) Normal: 25.1 (mm)
 Departure from Normal : (+) 50%

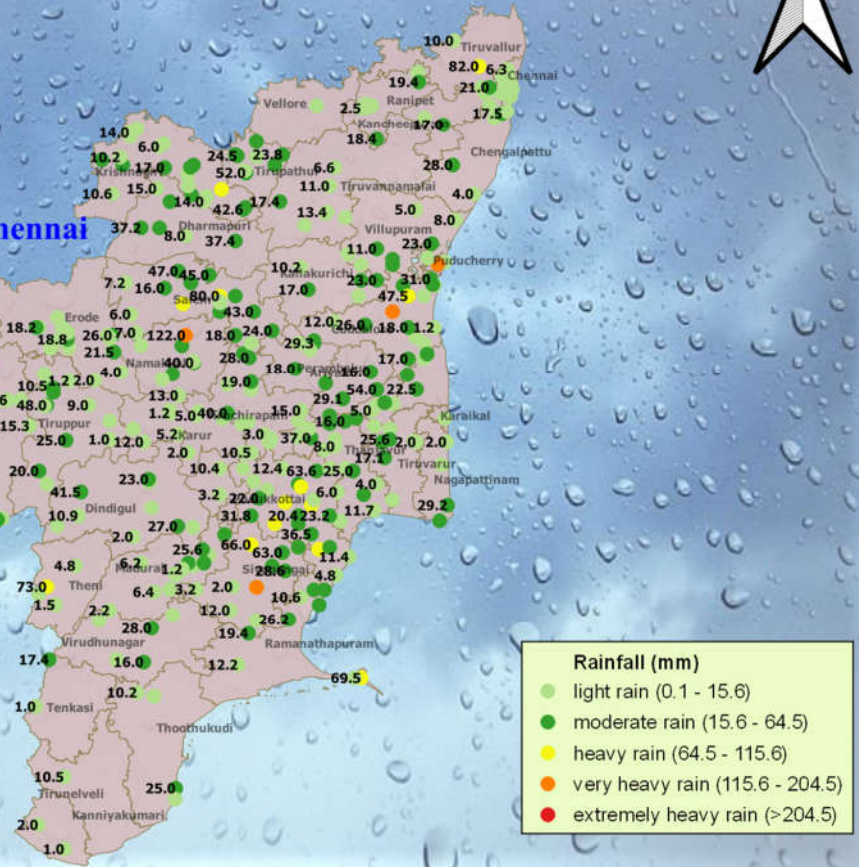


Realised rainfall (mm) during the past 24 hours
 (upto 08:30 IST of 06/10/2024)



India Meteorological Department
Regional Meteorological Centre, Chennai
 Date : 06/10/2024

Highest Rainfall recorded(mm): 135
Place: VADAKUTHU (CUDDALORE)





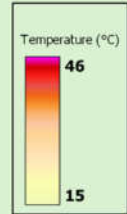
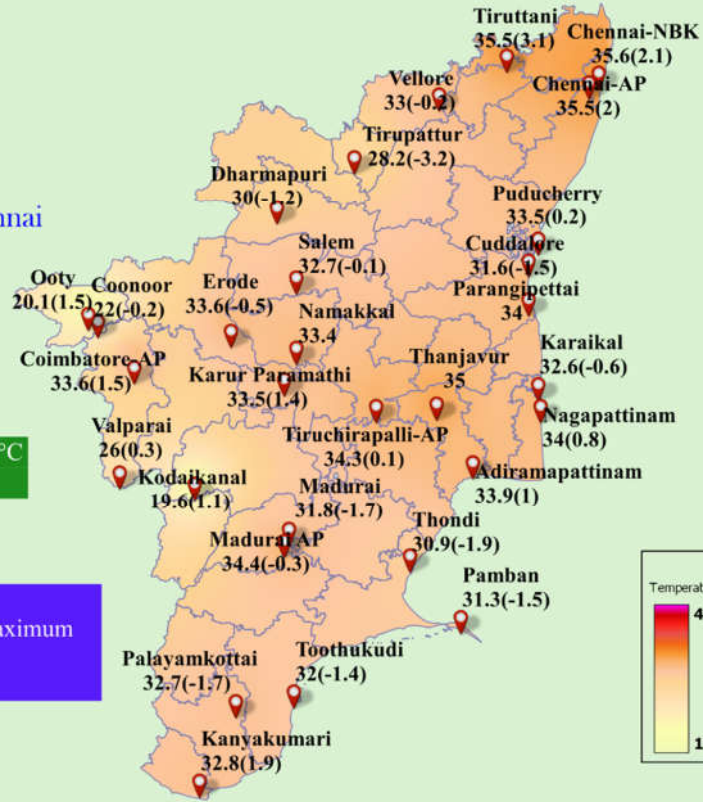
Realised Maximum Temperature (°C) in the past 24 Hrs (upto 0830 IST of 06/10/2024) and its departure from normal(°C)



India Meteorological Department
Regional Meteorological Centre, Chennai
Date: 06/10/2024

The highest temperature recorded : 35.6°C
Place : Chennai-NBK

N.B. The departure from normal maximum temperature is given in brackets.



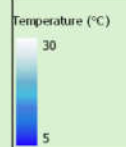
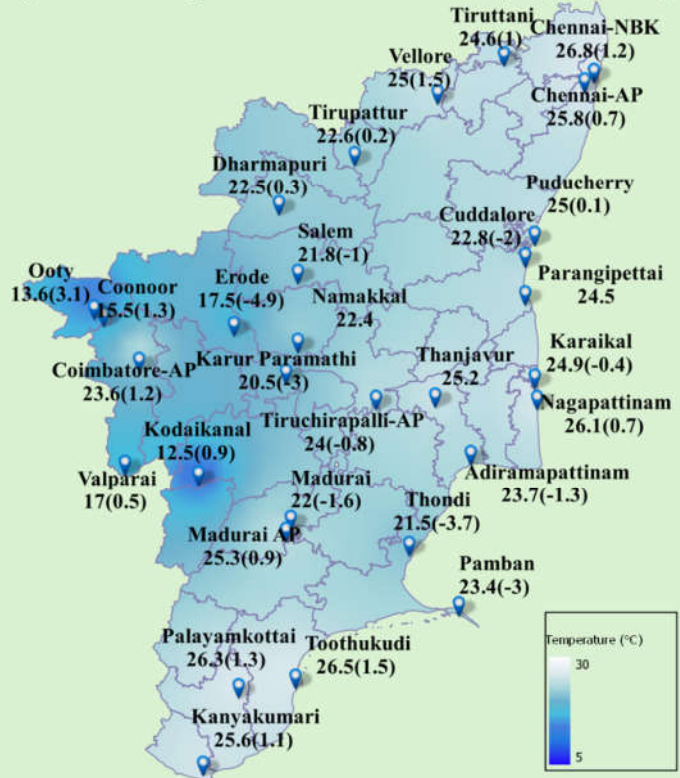
Realised Minimum Temperature (°C) in the past 24 Hrs (upto 0830 IST of 06/10/2024) and its departure from normal(°C)



India Meteorological Department
Regional Meteorological Centre, Chennai
Date : 06/10/2024

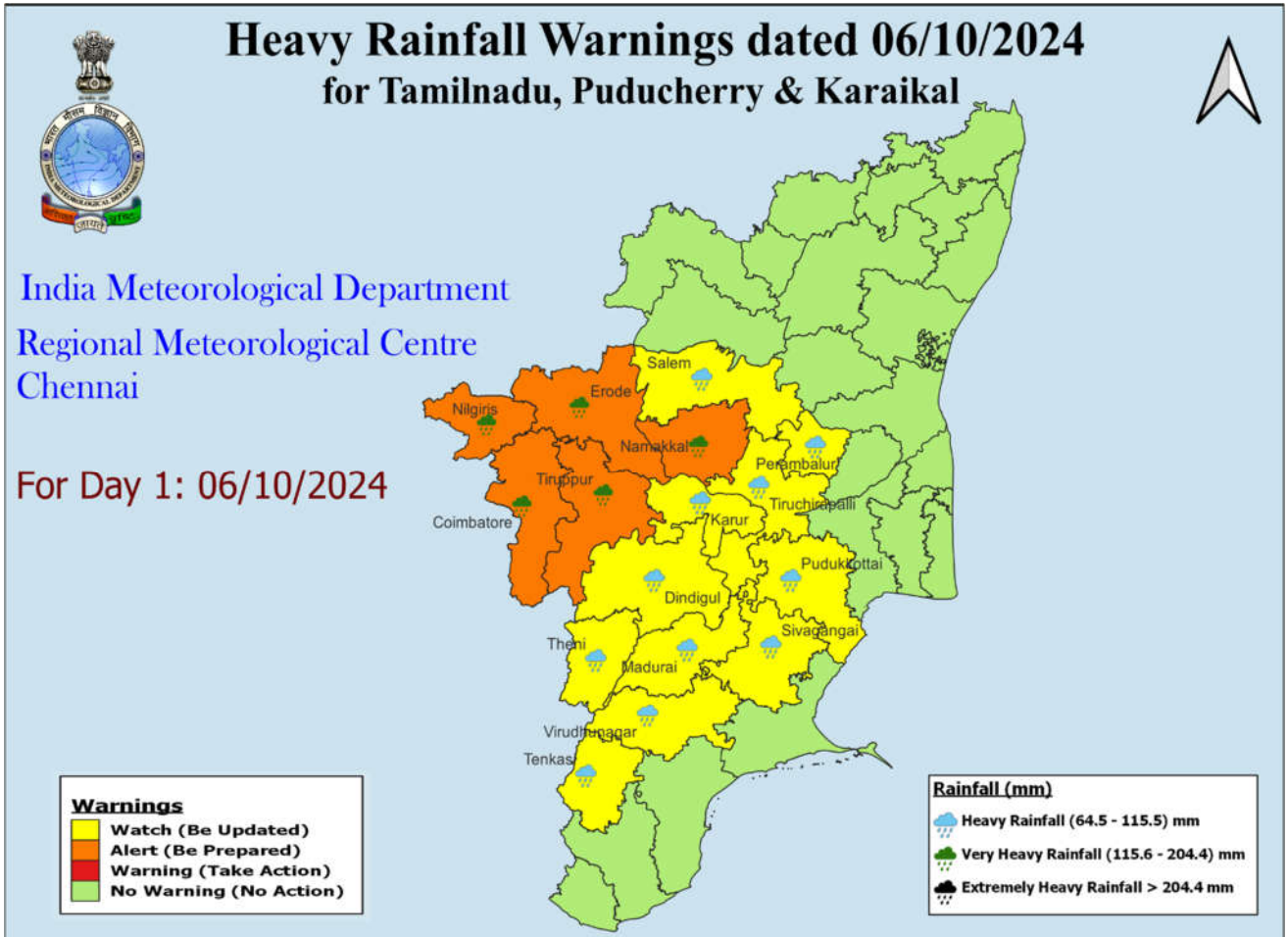
The lowest temperature recorded in the plains : 17.5° C
Place : Erode
The lowest temperature recorded in the hilly region : 12.5° C
Place : Kodaikanal

N.B. The departure from normal minimum temperature is given in brackets.

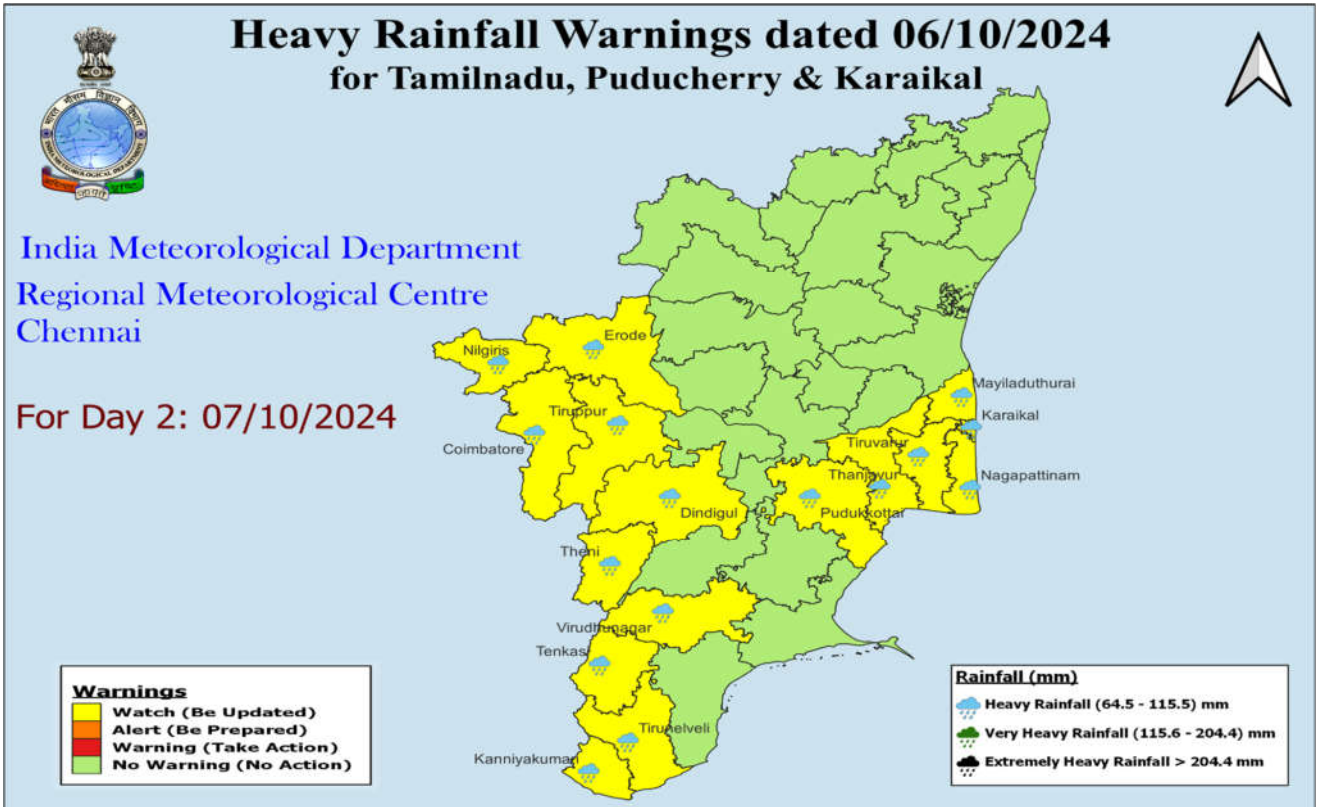


HEAVY RAINFALL WARNINGS

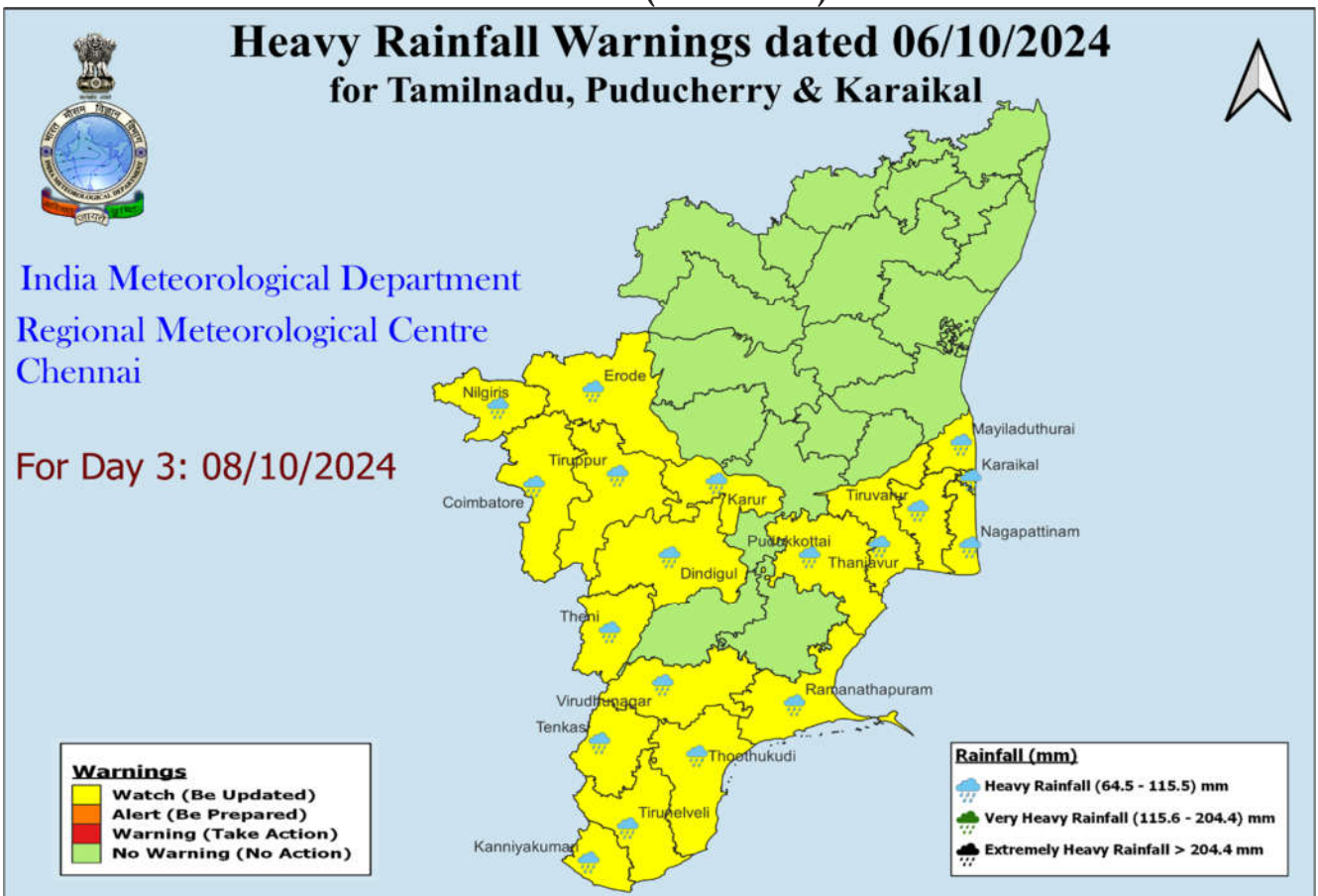
DAY 1 (06.10.2024)



DAY 2 (07.10.2024)



DAY 3 (08.10.2024)



DAY 4 (09.10.2024)

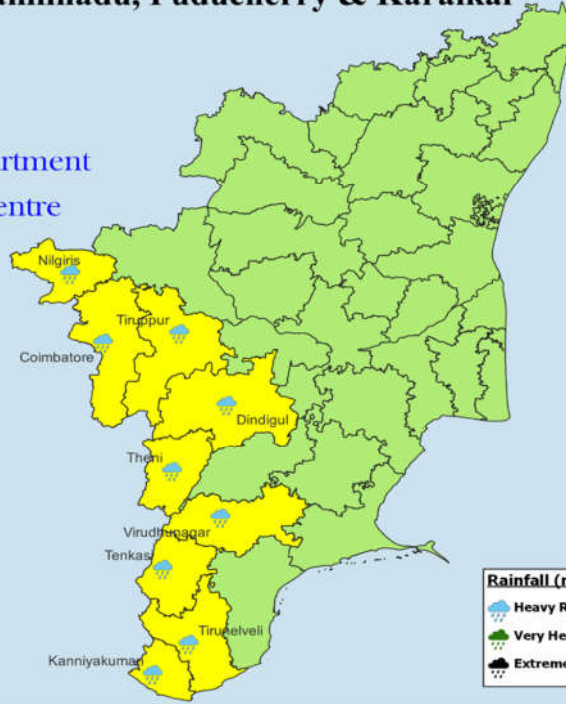
DAY 6 (11.10.2024)

**Heavy Rainfall Warnings dated 06/10/2024
for Tamilnadu, Puducherry & Karaikal**



India Meteorological Department
Regional Meteorological Centre
Chennai

For Day 6: 11/10/2024



Warnings

- Watch (Be Updated)
- Alert (Be Prepared)
- Warning (Take Action)
- No Warning (No Action)

Rainfall (mm)

- Heavy Rainfall (64.5 - 115.5) mm
- Very Heavy Rainfall (115.6 - 204.4) mm
- Extremely Heavy Rainfall > 204.4 mm

Legends:

North Tamil Nadu (NTN) districts	Chennai, Kancheepuram, Chengalpattu, Tiruvallur, Cuddalore, Villupuram, Tirupattur, Vellore, Ranipet, Kallakurichi, Tiruvannamalai, Krishnagiri, Dharmapuri, Salem, Namakkal, Karur, Erode, Thanjavur, Tiruvarur, Mayiladuthurai, Nagapattinam, Pudukottai, Nilgiris, Coimbatore, Tiruppur, Tiruchirapalli, Ariyalur, Perambalur.
South Tamil Nadu (STN) districts	Dindigul, Theni, Virudhunagar, Madurai, Sivagangai, Ramanathapuram, Thoothukudi, Thenkasi, Tirunelveli, Kanyakumari.
Interior Tamil Nadu (ITN) districts	Tirupattur, Vellore, Ranipet, Kallakurichi, Tiruvannamalai, Kancheepuram, Krishnagiri, Dharmapuri, Salem, Namakkal, Karur, Erode, Nilgiris, Coimbatore, Tiruppur, Tiruchirapalli, Ariyalur, Perambalur, Sivagangai, Virudhunagar, Theni, Dindigul, Madurai, Thenkasi.
North interior Tamil Nadu (NITN) districts	Tirupattur, Vellore, Ranipet, Kallakurichi, Tiruvannamalai, Kancheepuram, Krishnagiri, Dharmapuri, Salem, Namakkal, Karur, Erode, Nilgiris, Coimbatore, Tiruppur, Tiruchirapalli, Ariyalur and Perambalur.
South interior Tamil Nadu (SITN) districts	Sivagangai, Virudhunagar, Theni, Dindigul, Madurai, Thenkasi.

Coastal Tamil Nadu (CTN) districts	Tiruvallur, Chennai, Chengalpattu, Villupuram, Cuddalore, Thanjavur, Tiruvarur, Mayiladuthurai, Nagapattinam, Pudukottai, Ramanathapuram, Thoothukudi, Tirunelveli, Kanyakumari.
North Coastal Tamil Nadu (NCTN) districts	Tiruvallur, Chennai, Chengalpattu, Villupuram, Cuddalore, Thanjavur, Tiruvarur, Mayiladuthurai, Nagapattinam, Pudukottai.
South Coastal Tamil Nadu (SCTN) districts	Ramanathapuram, Thoothukudi, Tirunelveli, Kanyakumari.
Delta Districts	Thanjavur, Tiruvarur, Nagapattinam, Mayiladuthurai, Pudukottai and Karaikal area.
Delta and Adjoining districts	Thanjavur, Tiruvarur, Nagapattinam, Mayiladuthurai, Pudukottai, Karaikal and Tiruchirapalli, Perambalur, Ariyalur, Cuddalore.
Western Ghat districts	Nilgiris, Coimbatore, Tiruppur, Theni, Dindigul, Thenkasi, Virudhunagar
PDC	Puducherry and Karaikal

For more details visit www.mausam.imd.gov.in/chennai