

இந்திய அரசு  
இந்திய வானிலை ஆய்வு துறை  
மண்டல வானிலை ஆய்வு மையம்  
6, கல்லூரி சாலை  
சென்னை - 600006  
தொலைபேசி : 044- 28271951



GOVERNMENT OF INDIA

INDIA METEOROLOGICAL DEPARTMENT  
Regional Meteorological Centre  
6, College Road  
Chennai-600006  
Phone: 044- 28271951

DATE: Friday, August 26, 2022 (4 Bhadra 1944)

Time of issue: 1200 Hrs IST

## DAILY WEATHER REPORT FOR TAMILNADU, PUDUCHERRY & KARAIKAL AREA

### Summary of observations over Tamil Nadu and Puducherry recorded at 0830 hrs IST:

**Southwest monsoon has been active over Tamilnadu.**

Rainfall occurred at many places over Tamilnadu and Puducherry. Dry weather prevailed over Karaikal area.

**CHIEF AMOUNT OF RAINFALL IN CENTIMETERS:** Pandalur (dist Nilgiris) 9, Shoolagiri (dist Krishnagiri) 8 each, Avadi (dist Tiruvallur), Kovilpatti (dist Toothukudi), Vadapudupattu (dist Tirupattur), Hosur AWS (dist Krishnagiri), Edapadi (dist Salem), Omalur (dist Salem), Lakkur (dist Cuddalore) 7 each, Chembarabakkam (dist Tiruvallur), Marungapuri (dist Trichy), Needamangalam (dist Tiruvarur), Pandavaiyaru (dist Tiruvarur), Pennagaram (dist Dharmapuri), Poondi (dist Tiruvallur), ACS College ARG (dist Kancheepuram) 6 each, Bhavanisagar (dist Erode), Tirupathur (dist Sivaganga), Mayanur (dist Karur), Valparai Taluk Office (dist Coimbatore), Dharmapuri PTO (dist Dharmapuri), Nagapattinam (dist Nagapattinam), Upper Bhavani (dist Nilgiris), Bhavani (dist Erode), Avalanche (dist Nilgiris), Krishnarayapuram (dist Karur), Marandahalli (dist Dharmapuri) 5 each, Arani (dist Tiruvannamalai), Neyveli Aws (dist Cuddalore), Kalugumalai (dist Toothukudi), Ponnamaravathi (dist Pudukkottai), Coimbatore AP (dist Coimbatore), Hogenekal (dist Dharmapuri), Kundha Bridge (dist Nilgiris), Thamaraiyapakkam (dist Tiruvallur), Pallipattu (dist Tiruvallur), Tiruvannamalai (dist Tiruvannamalai), Uthukottai (dist Tiruvallur), Naduvattam (dist Nilgiris) 4 each, Sular (dist Coimbatore), Natham (dist Dindigul), Mettur (dist Salem), Kumarapalayam (dist Namakkal), Anjatti (dist Krishnagiri), Gobichettipalayam (dist Erode), Palacode (dist Dharmapuri), Thanjavur (dist Thanjavur), Viralimalai (dist Pudukkottai), Vallam (dist Thanjavur), Emeraldad (dist Nilgiris), Alangudi (dist Pudukkottai), Danishpet (dist Salem), Ettayapuram (dist Toothukudi), Mgr Nagar (dist Chennai), Dharamapuri (dist Dharmapuri), Nedungal (dist Krishnagiri), Tozhudur (dist Cuddalore), Hosur (dist Krishnagiri), Karaikudi (dist Sivaganga) 3 each, Valparai PTO (dist Coimbatore), Ambur (dist Tirupattur), Illuppur (dist Pudukkottai), Vellore (dist Vellore), Erode (dist Erode), Kovilpatti (dist Trichy), Devala (dist Nilgiris), Thanjavur PTO (dist Thanjavur), Sankaridurg (dist Salem), Salem (dist Salem), Tiruchengode (dist Namakkal), Labbaikudikadu (dist Perambalur), Kadambur (dist Toothukudi), Poonamallee (dist Tiruvallur), Glenmorgan (dist Nilgiris), Rasipuram (dist Namakkal), Mohanur (dist Namakkal), Gandarvakottai (dist Pudukkottai), Krishnagiri (dist Krishnagiri), Srimushnam (dist Cuddalore), Red Hills (dist Tiruvallur), Veppanthattai (dist Perambalur), Chinnakalar (dist Coimbatore), Gingee (dist Villupuram), G Bazar (dist Nilgiris), Denkanikottai (dist Krishnagiri), Thalavadi (dist Erode), Rayakottah (dist Krishnagiri), Kallakurichi (dist Kallakurichi), Wallajah (dist Ranipet), Arcot (dist Ranipet), Vaniyambadi (dist Tirupattur), Paparapatty KVK (dist Dharmapuri) 2 each, Thandarampettai (dist Tiruvannamalai), Thali (dist Krishnagiri), Vilupuram (dist Villupuram), Sathyamangalam (dist Erode), Panchapatti (dist Karur), Penucondapuram (dist Krishnagiri), Maniyachi (dist Toothukudi), Tiruvarur (dist Tiruvarur), Chennai

Airport (dist Chennai), Alandur (dist Chennai), Arimalam (dist Pudukkottai), Polur (dist Tiruvannamalai), Tirupuvanam (dist Sivaganga), Anna University (dist Chennai), Katpadi (dist Vellore), Pudukottai (dist Pudukkottai), Keelpennathur (dist Tiruvannamalai), Chengalpattu (dist Chengalpattu), Barur (dist Krishnagiri), Puducherry (dist Puducherry), Bhuvanagiri (dist Cuddalore), Perambalur (dist Perambalur), Kadavur (dist Karur), Cholavaram (dist Tiruvallur), Tirumayam (dist Pudukkottai), Avudayarkoil (dist Pudukkottai), Sholayar (dist Coimbatore), Vedasandur (dist Dindigul), Sankarankoil (dist Tenkasi), Harur (dist Dharmapuri), Mangalapuram (dist Namakkal), Budalur (dist Thanjavur), Tirumangalam (dist Madurai), Thiruchuzhi (dist Virudhunagar), Sriperumbudur (dist Kancheepuram), Ammundi (dist Vellore), Sholingur (dist Ranipet), Vamban KVK (dist Pudukkottai), Virudhachalam KVK (dist Cuddalore), West Tambaram ARG (dist Chengalpattu) 1 each.

**FORECAST & WARNINGS FOR TAMILNADU AND PUDUCHERRY FOR NEXT FIVE DAYS**

Day 1(26.08.2022)	Light to moderate rain at many places with isolated Thunderstorm & lightning is likely to occur over Tamilnadu and Puducherry. <b>Heavy rain is likely to occur at isolated places over Nilgiris, Coimbatore, Tiruppur, Theni, Dindigul, Erode, Karur, Namakkal, Salem, Dharmapuri, Krishnagiri, Tirupattur, Vellore and Tiruchirapalli districts of Tamilnadu.</b>
Day 2(27.08.2022)	Light to moderate rain at many places with isolated Thunderstorm & lightning is likely to occur over Tamilnadu and Puducherry. <b>Heavy rain is likely to occur at isolated places over Nilgiris, Coimbatore, Tiruppur, Theni, Dindigul, Erode, Karur, Namakkal, Salem, Dharmapuri, Krishnagiri, Tirupattur, Vellore and Tiruchirapalli districts of Tamilnadu.</b>
Day 3(28.08.2022)	Light to moderate rain at many places with isolated Thunderstorm & lightning is likely to occur over Tamilnadu. <b>Heavy rain is likely to occur at isolated places over Nilgiris, Erode, Krishnagiri, Dharmapuri, Salem, Namakkal, Tiruchirapalli, Kallakurichi, Perambalur, Cuddalore, Tirupattur and Villupuram districts of Tamilnadu and Puducherry.</b>
Day 4(29.08.2022)	Light to moderate rain at many places with isolated Thunderstorm & lightning is likely to occur over Tamilnadu, Puducherry and Karaikal area. <b>Heavy rain is likely to occur at isolated places over Nilgiris, Coimbatore, Tiruppur, Theni, Dindigul, Madurai, Virudhunagar, Sivaganga, Erode, Krishnagiri, Salem, Namakkal and Tirupattur districts of Tamilnadu.</b>
Day 5(30.08.2022)	Light to moderate rain at many places with isolated Thunderstorm & lightning is likely to occur over Tamilnadu, Puducherry and Karaikal area. <b>Heavy rain is likely to occur at isolated places over Nilgiris, Erode, Krishnagiri, Dharmapuri, Salem, Vellore, Tirupattur and Ranipet districts of Tamilnadu.</b>

**LOCAL FORECAST FOR CHENNAI CITY AND NEIGHBOURHOOD:**

**For next 24 HRS:** Sky condition is likely to be partly cloudy. Thunderstorm with Light/Moderate rain is likely to occur in some areas. Maximum and minimum temperature is likely to be around 36°C and 26°C respectively.

**For next 48 HRS:** Sky condition is likely to be partly cloudy. Thunderstorm with Light/Moderate rain is likely to occur in some areas. Maximum and minimum temperature is likely to be around 36°C and 26°C respectively.

P. S. KANNAN  
SCIENTIST 'E'

For Deputy Director General of Meteorology  
Regional Meteorological Centre, Chennai

For more details visit [www.mausam.imd.gov.in/chennai](http://www.mausam.imd.gov.in/chennai)

**OBSERVATIONS RECORDED AT 0830 HRS IST OF DATE:26-08-2022 (4 Bhadra 1944 SAKA)**

Stations	Temperature Degrees celsius				Humidity percentage		Rainfall					Weather remarks
	Maximum		Minimum		At 0830 Hrs IST	Dep. from normal	Millimeters			Centimeters		
	Past 24 Hrs	Dep. from normal	Past 24 Hrs	Dep. from normal			Past 24 Hrs	Seasons total from	Departure from normal	Year's total from	Annual normal	
	°C	°C	°C	°C	%	%	mm	1-6-2022	mm	1-1-2022	cm	
Adiramapattinam	33.1	-1.2	24.3	-1	81	10	0.2	568.3	380.9	105	124	r
Chennai	35.0	0.4	25.7	0	74	-1	0.9	358.6	66.9	49	140	r
Chennai_AP	35.0	0.2	25.0	-0.6	76	3	13.1	375.9	57	46	138	r
Coimbatore_AP	33.0	0.9	22.0	0	83	-1	42.0	170.5	74.2	30	59	r
Coonoor	22.0	-0.2	14.2	-0.2	94	19	1.2	296.5	110.4	79	159	r
Cuddalore	34.0	-0.8	24.6	-0.5	81	7	0	278.0	45.5	48	134	
Dharmapuri	28.5	-4.1	21.0	-1.9	93	22	51.0	337.0	127	58	91	r
Erode	34.6	--	20.2	--	95	--	24.0	426.6	--	61	--	r
Kanyakumari	30.8	0	24.2	0	72	-6	0	182.8	5.4	26	75	
Karur Paramathi	35.5	2.4	23.0	-1.2	84	6	0	221.0	--	31	59	
Karaikal	33.2	-1.4	24.6	-0.9	87	10	0	116.2	-63.2	45	150	
Kodaikanal	20.3	1.6	10.5	-1.1	98	13	3.3	671.6	346.9	125	158	r
Madurai City	35.2	-0.9	22.4	-2.9	90	19	0.6	350.1	--	61	--	r
Madurai_AP	35.8	-0.2	24.1	-1	81	17	0.6	364.2	199.8	56	85	r
Nagapattinam	34.0	-1.1	24.0	-1.7	89	14	47.6	220.9	55.5	60	143	r
Palayamkottai	34.5	-1.2	24.4	-1.9	70	6	0	75.7	34.4	27	73	
Pamban	31.6	-1.5	26.7	0.1	81	6	0	113.4	84.7	40	91	
Parangipettai	33.6	--	24.6	--	86	--	0	271.7	78.6	54	139	
Puducherry	33.4	-1.9	23.8	-1.7	83	5	10.4	275.2	37	51	134	r
Salem	33.1	-0.4	20.4	-2.5	75	-5	22.6	377.5	76.4	75	102	r
Thanjavur	33.0	-3.3	25.0	-0.3	87	10	23.0	175.7	-22.9	40	95	r
Tiruchirappalli_AP	35.1	-0.7	24.5	-0.9	80	11	1.8	243.3	83.2	39	87	r
Tiruthani	35.0	0.2	24.0	-0.1	69	0	0	404.2	111.3	51	101	
Tondi	34.0	1.3	24.4	-1.1	76	3	0	238.4	156.1	45	88	
Thoothukudi	33.3	-1.6	26.2	0.8	81	10	0	14.7	-5.1	23	63	
Uthagamandalam	18.1	0	10.0	-1.1	96	7	5.8	717.6	340.3	111	116	r
Valparai	22.0	--	15.0	--	96	--	24.4	2776.3	--	356	--	r
Vellore	32.8	-1.7	23.7	-0.3	87	12	24.0	380.6	76.8	48	103	r

\*Weather at 0830 hours IST. Other remarks refer to preceding 24 hours. NA-Not avble D-Duststorm l-Lightning d-drizzle m-mist s-snow r-rain h-hail f-fog p-shower z-haze t-thunderstorm tr-rainfall not measurable. Tr-rainfall 0.01 to 0.49 cm AP-Airport plus sign omitted when departures above normal.

**GOVERNMENT OF INDIA, MINISTRY OF EARTH SCIENCES**

**INDIA METEOROLOGICAL DEPARTMENT**

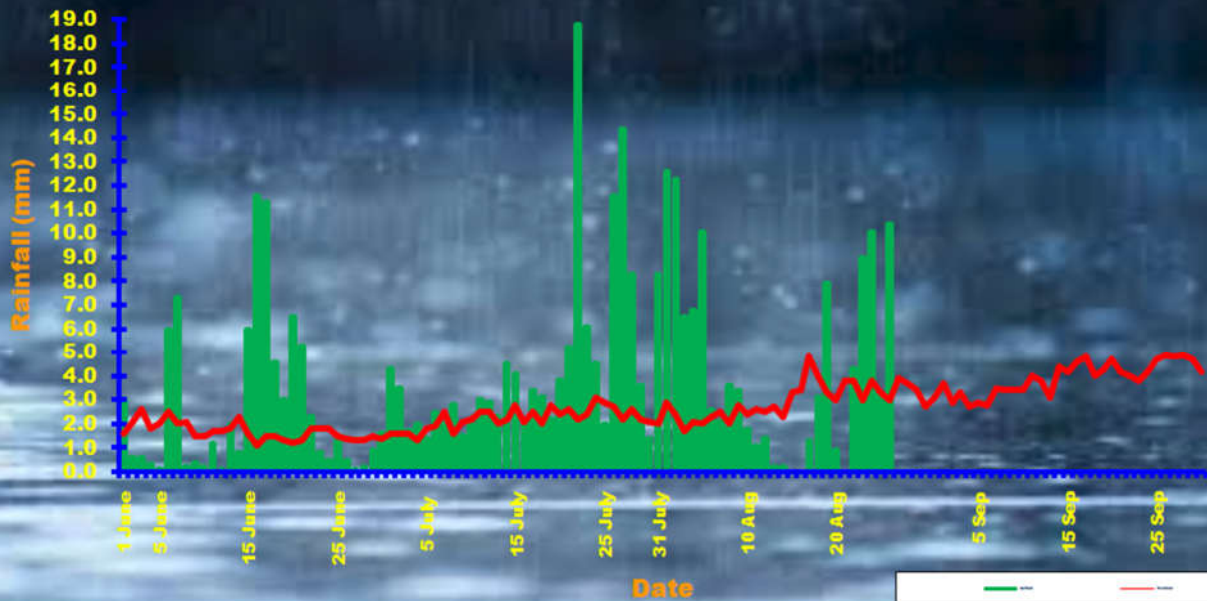
**REGIONAL METEOROLOGICAL CENTRE, CHENNAI**

**Districtwise daily / seasonal rainfall distribution for Tamil Nadu & Puducherry**

<b>SW MONSOON RAINFALL 2022</b>		<b>26.08.2022</b>			<b>From 01.06.2022 to 26.08.2022</b>		
<b>CODE</b>	<b>NAME</b>	<b>ACTUAL in mm</b>	<b>NORMAL in mm</b>	<b>PDN*</b>	<b>ACTUAL in mm</b>	<b>NORMAL in mm</b>	<b>PDN*</b>
	<b>STATES</b>						
31	<b>TAMIL NADU</b>	10.4	2.9	258	333.3	195.6	70
	<b>MET. SUBDIVISIONS</b>						
31	<b>TAMIL NADU &amp; PUDUCHERRY</b>						
534	ARIYALUR	0.0	2.7	-100	293.7	178.0	65
687	CHENGALPATTU	1.8	2.7	-34	214.2	255.1	-16
461	CHENNAI	6.8	1.7	297	335.0	283.9	18
462	COIMBATORE	15.9	4.3	269	1078.9	540.7	100
463	CUDDALORE	6.9	3.8	82	338.7	210.7	61
464	DHARMAPURI	33.4	4.0	734	399.3	206.8	93
465	DINDIGUL	7.0	2.7	160	284.9	151.5	88
466	ERODE	25.2	2.6	869	276.2	146.2	89
688	KALLAKURICHI	4.2	4.3	-2	218.6	233.0	-6
467	KANCHEEPURAM	2.0	3.6	-43	295.1	294.8	0
468	KANYAKUMARI	0.5	2.2	-77	225.5	357.5	-37
636	KARAIKAL	0.0	3.4	-100	116.2	171.7	-32
469	KARUR	12.8	3.2	299	164.8	89.3	85
470	KRISHNAGIRI	22.1	3.1	612	398.4	189.8	110
471	MADURAI	1.5	3.2	-54	326.1	157.5	107
695	MAYILADUTHURAI	0.0	3.7	-100	236.9	173.6	36
472	NAGAPATTINAM	11.9	2.7	341	197.6	143.1	38
473	NAMAKKAL	11.8	3.8	211	320.3	180.4	78
474	NILGIRIS	21.5	5.8	270	1583.7	633.1	150
475	PERAMBALUR	8.0	2.2	264	327.9	143.0	129
476	PUDUCHERRY	10.4	2.8	271	275.2	237.2	16
477	PUDUKKOTTAI	11.5	3.4	238	231.7	170.2	36
478	RAMANATHAPURAM	0.0	1.3	-100	140.1	68.4	105
689	RANIPET	8.2	3.9	109	482.8	284.4	70
479	SALEM	20.5	4.3	377	344.8	233.5	48
480	SIVAGANGA	14.2	3.7	284	387.8	191.0	103
690	TENKASI	1.8	1.0	80	126.4	119.3	6
481	THANJAVUR	6.2	3.2	94	290.4	171.7	69
482	THENI	1.0	2.5	-59	461.4	129.1	257
483	TIRUNELVELI	0.0	0.8	-100	92.1	52.6	75
691	TIRUPATTUR	17.9	3.8	372	408.7	255.3	60
535	TIRUPPUR	1.3	1.5	-11	149.0	70.5	111
484	TIRUVALLUR	14.6	3.3	342	379.8	294.5	29
485	TIRUVANNAMALAI	13.8	3.4	306	403.9	269.5	50
486	TIRUVARUR	17.0	3.0	467	332.7	166.9	99
488	TOOTHUKUDI	10.1	1.3	679	56.5	28.8	96
487	TRICHY	6.6	2.1	215	241.6	138.2	75
489	VELLORE	8.8	3.9	125	323.9	262.1	24
490	VILLUPURAM	6.8	3.6	89	250.0	246.4	1
491	VIRUDHUNAGAR	1.8	1.6	10	182.5	96.7	89
	<b>SUBDIVISION RAINFALL</b>	10.4	3.0	246	332.9	195.7	70
<b>LEGEND</b>	<b>PDN*</b>	<b>Percentage Departure from Normal</b>					
	**	<b>Rainfall for the 24 hrs ending at 0830 hrs of date</b>					



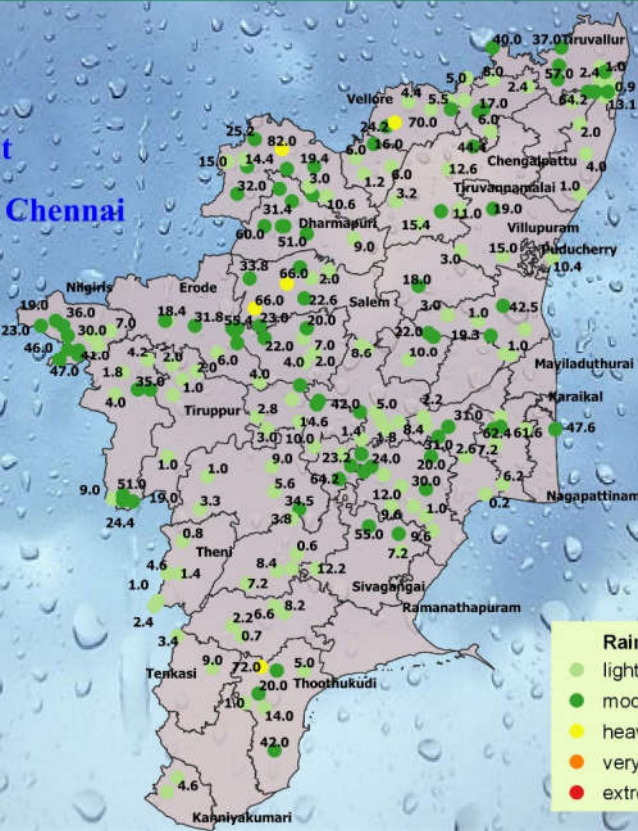
**SOUTHWEST MONSOON RAINFALL - 2022 for TAMILNADU AND PUDUCHERRY**  
 From 01.06.2022 to 26.08.2022 Actual: 332.9 (mm) Normal: 195.7 (mm) Departure from Normal : 70 %



**Realised rainfall (mm) during the past 24 hours  
 (upto 08:30 IST of 26/08/2022)**



**India Meteorological Department**  
**Regional Meteorological Centre, Chennai**  
 Date : 26/08/2022



**Rainfall (mm)**

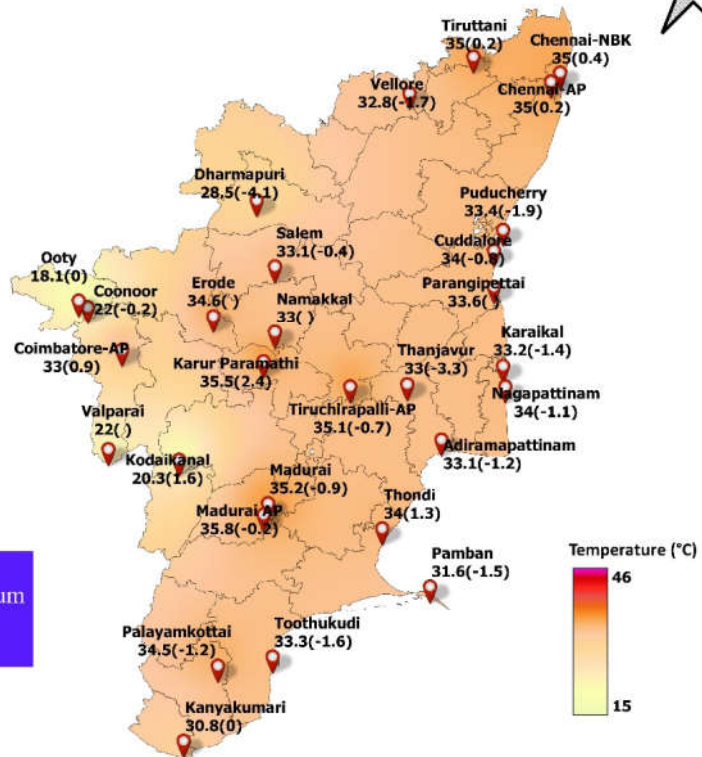
- light rain (0.1 - 15.6)
- moderate rain (15.6 - 64.5)
- heavy rain (64.5 - 115.6)
- very heavy rain (115.6 - 204.5)
- extremely heavy rain (>204.5)



## Realised Maximum Temperature (°C) in the past 24 Hrs (upto 0830 IST of 26/08/2022 ) and its departure from normal(°C)



India Meteorological Department  
Regional Meteorological Centre, Chennai  
Date: 26/08/2022



The highest temperature recorded : 35.8°C  
Place : Madurai AP

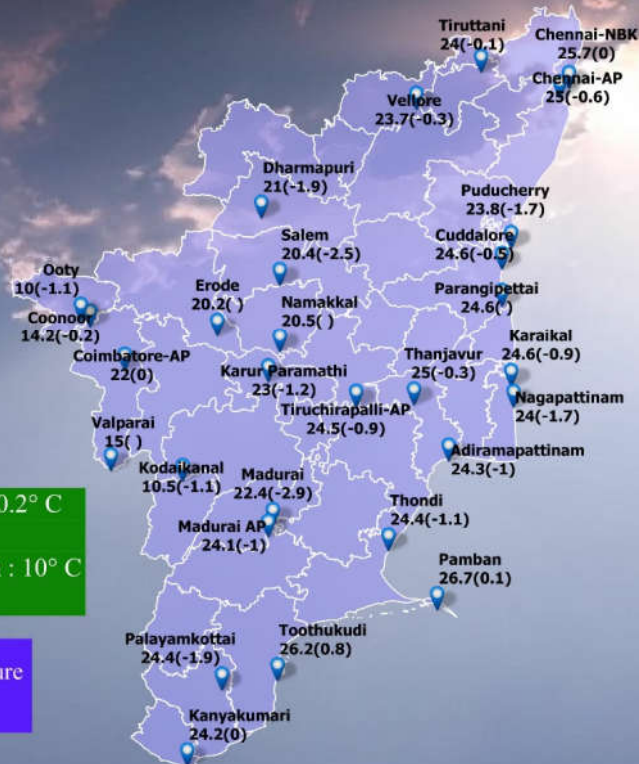
N.B. The departure from normal maximum temperature is given in brackets.



## Realised Minimum Temperature (°C) in the past 24 Hrs (upto 0830 IST of 26/08/2022 ) and its departure from normal(°C)



India Meteorological Department  
Regional Meteorological Centre, Chennai  
Date : 26/08/2022



The lowest temperature recorded in the plains : 20.2° C  
Place : Erode  
The lowest temperature recorded in the hilly region : 10° C  
Place : Ooty

N.B. The departure from normal minimum temperature is given in brackets.



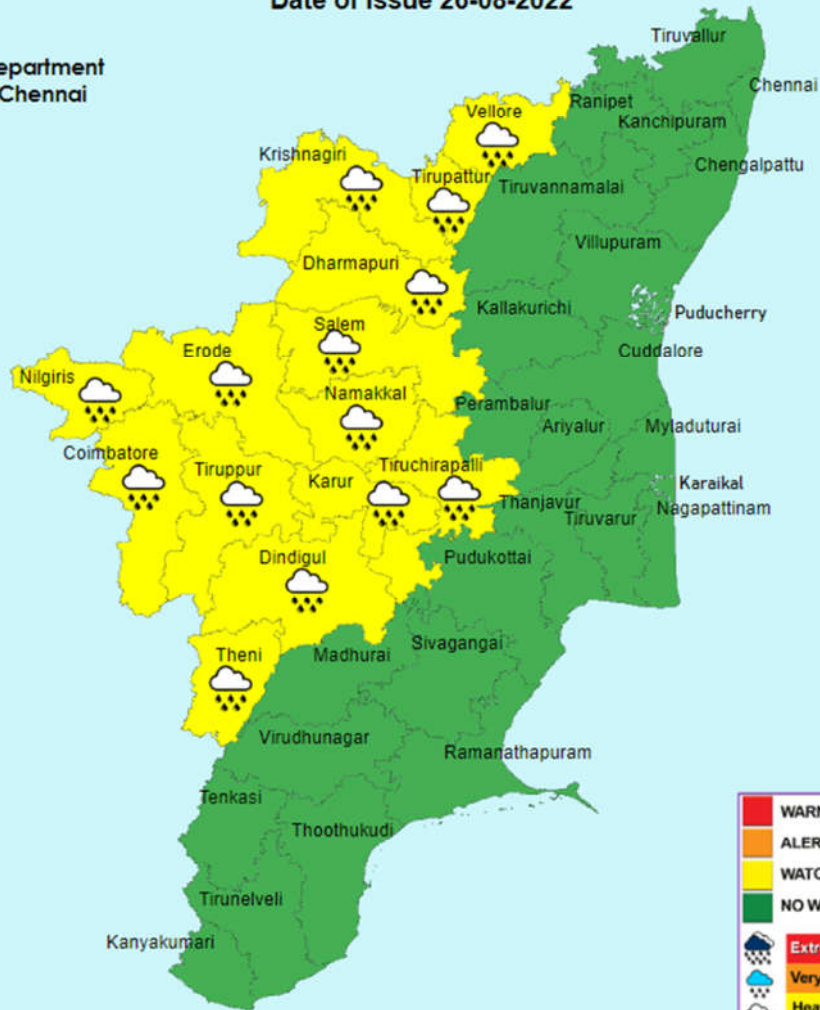


India Meteorological Department  
Regional Met Centre, Chennai

## Warning - Day 1

(Valid from 0830 hrs IST of 26-08-2022 to 0830 hrs IST of 27-08-2022 )

Date of Issue 26-08-2022



	<b>WARNING (TAKE ACTION)</b>
	<b>ALERT (BE PREPARED)</b>
	<b>WATCH (BE UPDATED)</b>
	<b>NO WARNING (NO ACTION)</b>
	<b>Extremely Heavy Rainfall &gt; 204.4 mm.</b>
	<b>Very Heavy Rainfall 115.6 to 204.4 mm.</b>
	<b>Heavy Rainfall 64.5 to 115.5 mm.</b>



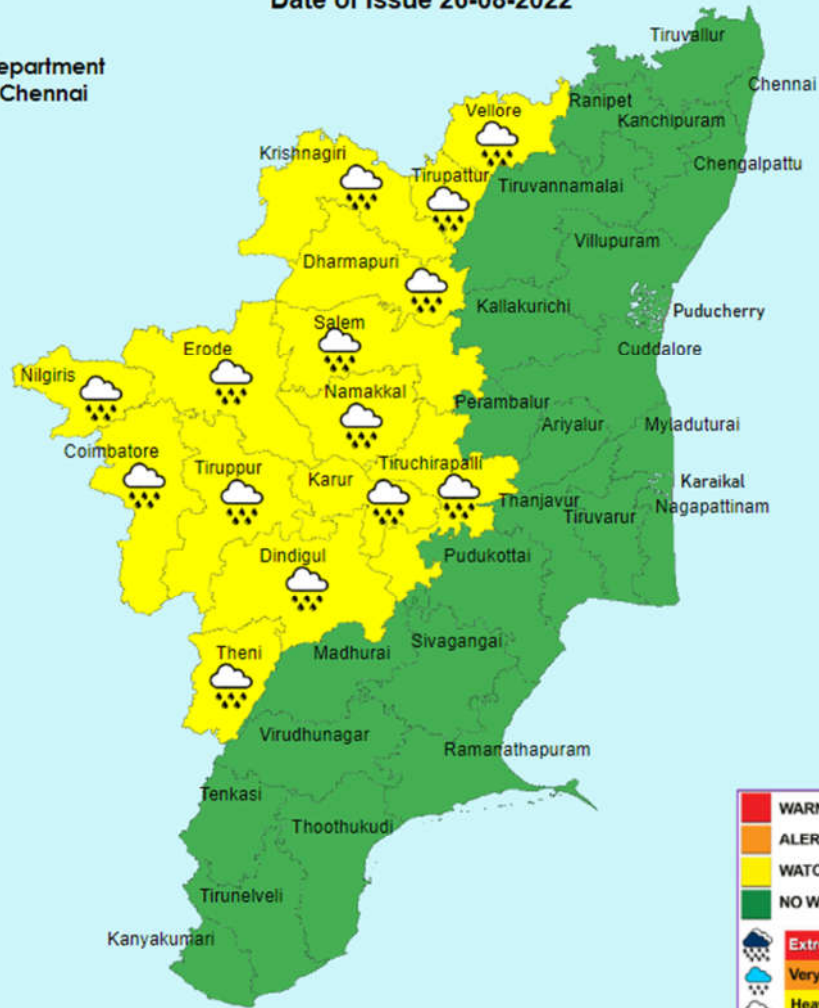


India Meteorological Department  
Regional Met Centre, Chennai

## Warning - Day 2

(Valid from 0830 hrs IST of 27-08-2022 to 0830 hrs IST of 28-08-2022 )

Date of Issue 26-08-2022



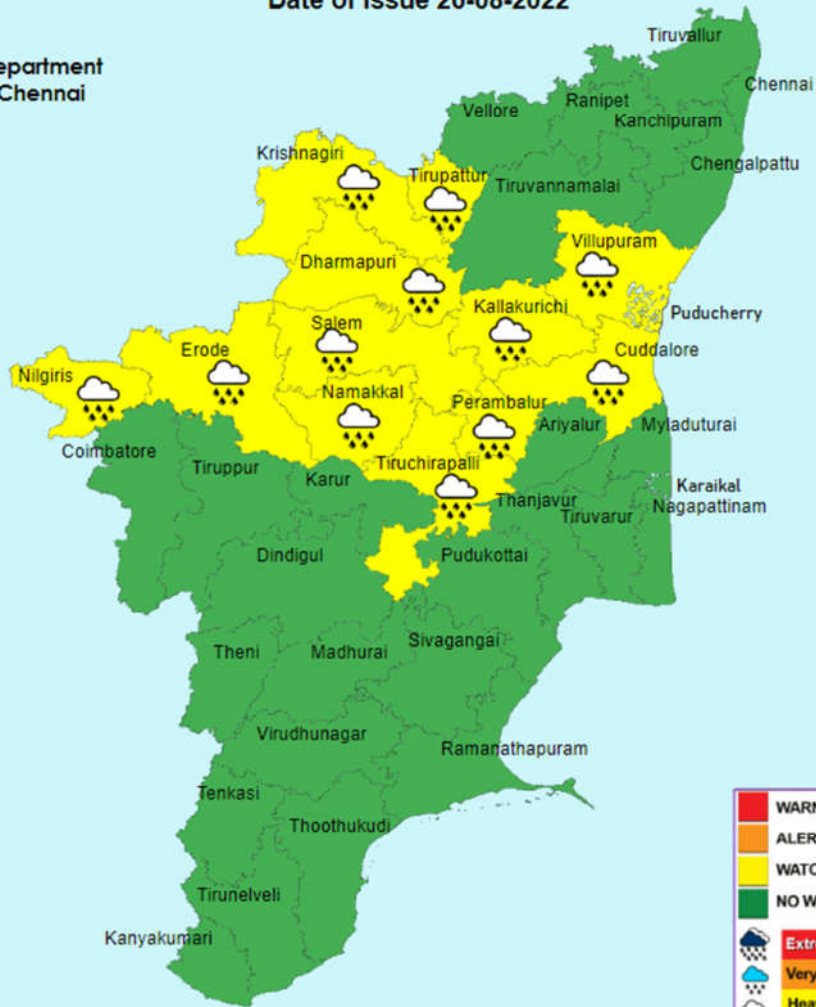
	<b>WARNING (TAKE ACTION)</b>
	<b>ALERT (BE PREPARED)</b>
	<b>WATCH (BE UPDATED)</b>
	<b>NO WARNING (NO ACTION)</b>
	<b>Extremely Heavy Rainfall &gt; 204.4 mm.</b>
	<b>Very Heavy Rainfall 115.6 to 204.4 mm.</b>
	<b>Heavy Rainfall 64.5 to 115.5 mm.</b>



India Meteorological Department  
Regional Met Centre, Chennai

## Warning - Day 3

(Valid from 0830 hrs IST of 28-08-2022 to 0830 hrs IST of 29-08-2022 )  
Date of Issue 26-08-2022



	<b>WARNING (TAKE ACTION)</b>
	<b>ALERT (BE PREPARED)</b>
	<b>WATCH (BE UPDATED)</b>
	<b>NO WARNING (NO ACTION)</b>
	<b>Extremely Heavy Rainfall &gt; 204.4 mm.</b>
	<b>Very Heavy Rainfall 115.6 to 204.4 mm.</b>
	<b>Heavy Rainfall 64.5 to 115.5 mm.</b>

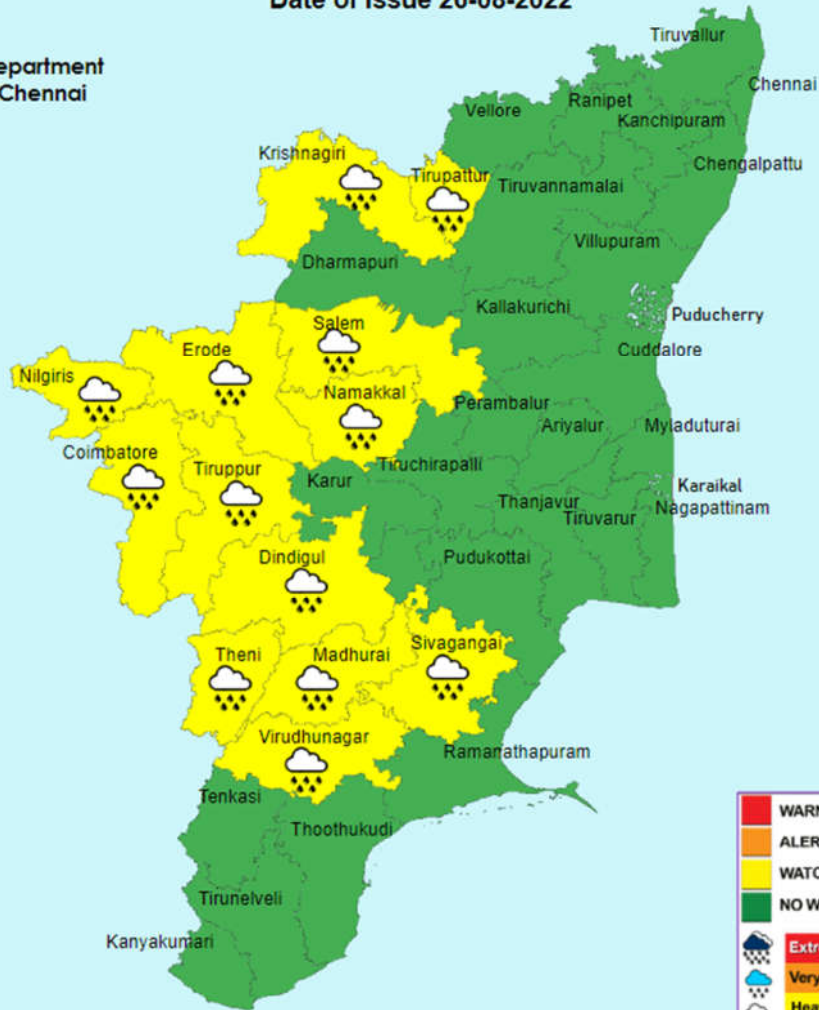


India Meteorological Department  
Regional Met Centre, Chennai

## Warning - Day 4

(Valid from 0830 hrs IST of 29-08-2022 to 0830 hrs IST of 30-08-2022 )

Date of Issue 26-08-2022



	<b>WARNING (TAKE ACTION)</b>
	<b>ALERT (BE PREPARED)</b>
	<b>WATCH (BE UPDATED)</b>
	<b>NO WARNING (NO ACTION)</b>
	<b>Extremely Heavy Rainfall &gt; 204.4 mm.</b>
	<b>Very Heavy Rainfall 115.6 to 204.4 mm.</b>
	<b>Heavy Rainfall 64.5 to 115.5 mm.</b>

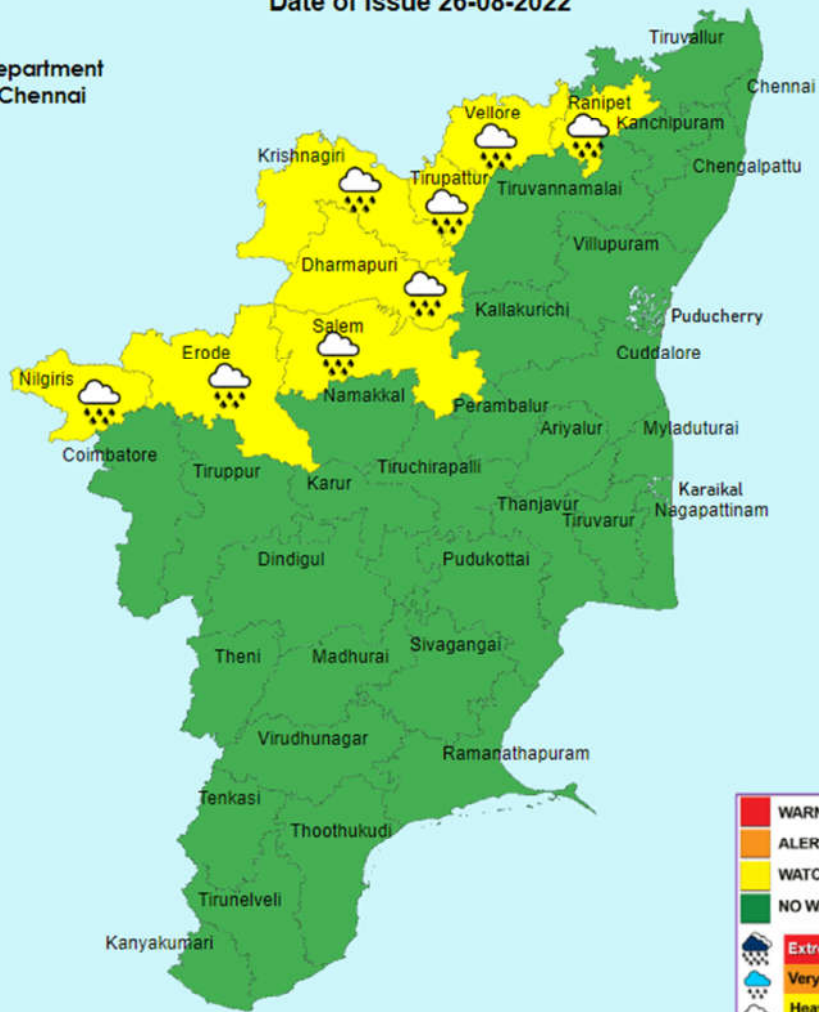




India Meteorological Department  
Regional Met Centre, Chennai

## Warning - Day 5

(Valid from 0830 hrs IST of 30-08-2022 to 0830 hrs IST of 31-08-2022 )  
Date of Issue 26-08-2022



	WARNING (TAKE ACTION)
	ALERT (BE PREPARED)
	WATCH (BE UPDATED)
	NO WARNING (NO ACTION)
	Extremely Heavy Rainfall > 204.4 mm.
	Very Heavy Rainfall 115.6 to 204.4 mm.
	Heavy Rainfall 64.5 to 115.5 mm.

**Legends:**

<b>North Tamil Nadu (NTN) districts</b>	Chennai, Kancheepuram, Chengalpattu, Tiruvallur, Cuddalore, Villupuram, Kallakurichi, Thanjavur, Tiruvarur, Nagapattinam, Mayiladuthurai, Pudukottai, Vellore, Thirupattur, Ranipet, Tiruvannamalai, Krishnagiri, Salem, Dharmapuri, Namakkal, Nilgiris, Tiruppur, Coimbatore, Erode, Karur, Tiruchirapalli, Ariyalur, Perambalur.
<b>South Tamil Nadu (STN) districts</b>	Ramanathapuram, Tirunelveli, Thenkasi, Thoothukudi, Theni, Kanyakumari, Sivagangai, Virudhunagar, Dindigul, Madurai.
<b>Interior Tamil Nadu (ITN) districts</b>	Vellore, Thirupattur, Ranipet, Tiruvannamalai, Krishnagiri, Dharmapuri, Salem, Namakkal, Nilgiris, Tiruppur, Coimbatore, Erode, Karur, Tiruchirapalli, Ariyalur, Perambalur, Sivagangai, Virudhunagar, Theni, Dindigul, Madurai, Thenkasi, Kallakurichi.
<b>North interior Tamil Nadu (NITN) districts</b>	Vellore, Thirupattur, Ranipet, Kancheepuram, Tiruvannamalai, Krishnagiri, Dharmapuri, Salem, Namakkal, Nilgiris, Tiruppur, Coimbatore, Erode, Karur, Tiruchirapalli, Ariyalur, Perambalur.
<b>South interior Tamil Nadu (SITN) districts</b>	Sivagangai, Virudhunagar, Theni, Dindigul, Madurai, Thenkasi.
<b>Coastal Tamil Nadu (CTN) districts</b>	Chennai, Chengalpattu, Tiruvallur, Cuddalore, Villupuram, Thanjavur, Tiruvarur, Nagapattinam, Mayiladuthurai, Pudukottai, Ramanathapuram, Tirunelveli, Thoothukudi, Kanyakumari.
<b>North Coastal Tamil Nadu (NCTN) districts</b>	Chennai, Chengalpattu, Tiruvallur, Cuddalore, Villupuram, Thanjavur, Tiruvarur, Nagapattinam, Pudukottai, Mayiladuthurai.
<b>South Coastal Tamil Nadu (SCTN) districts</b>	Ramanathapuram, Tirunelveli, Thoothukudi, Kanyakumari.
<b>Delta districts</b>	Thanjavur, Tiruvarur, Nagapattinam, Mayiladuthurai.
<b>Western Ghat districts</b>	Nilgiris, Coimbatore, Theni, Dindigul, Tiruppur, Thenkasi, Virudhunagar
<b>PDC</b>	Puducherry & Karaikal area