



இந்திய அரசு
இந்திய வானிலை ஆய்வு துறை
மண்டல வானிலை ஆய்வு மையம்
6, கல்லூரி சாலை,
சென்னை-600006
தொலைபேசி : 044- 28271951



GOVERNMENT OF INDIA
INDIA METEOROLOGICAL DEPARTMENT
Regional Meteorological Centre
No. 6, College Road,
Chennai-600006
Phone: 044- 28271951

DATE: Thursday, November 14, 2024 (23 Karthika 1946)

Time of issue: 1300 Hrs IST

DAILY WEATHER REPORT FOR TAMILNADU, PUDUCHERRY & KARAIKAL AREA

Summary of observations over Tamil Nadu, Puducherry and Karaikal recorded at 0830 hrs IST:

Rainfall occurred at a few places over Tamilnadu (at many places over North Tamilnadu and at a few places over South Tamilnadu) and over Puducherry & Karaikal area.

CHIEF AMOUNT OF RAINFALL IN CENTIMETERS: Vedaranyam (dist Nagapattinam) 9, Nalumukku (dist Tirunelveli), Oothu (dist Tirunelveli) 8 each, Kakkachi (dist Tirunelveli), Manjolai (dist Tirunelveli), Periya kalapet ARG (dist Puducherry) 7 each, Kalakadu (dist Tirunelveli) 6, Sholinganallur (dist Chennai), Satyabama Uty ARG (dist Chengalpattu), Zone 15 Sholinganallur (dist Chennai), Zone 15 Uthandi (dist Chennai) 5 each, Tambaram (dist Chengalpattu), Sholinganallur MW (dist Chennai) 4 each, Vadakuthu (dist Cuddalore), sairam Institution ARG (dist Chengalpattu), Puducherry Town (dist Puducherry), Sethiathope (dist Cuddalore), Moolaikaraipatti (dist Tirunelveli), Perambalur (dist Perambalur), Manimutharu (dist Tirunelveli), VIT_Chennai AWS (dist Chengalpattu), Patthukannu (dist Puducherry), Vanamadevi (dist Cuddalore), Bhoothapandy (dist Kanyakumari), Zone 12 Alandhur (dist Chennai), Puducherry (dist Puducherry), SRC Kudithangi (dist Cuddalore), Mahabalipuram (dist Chengalpattu) 3 each, Srimushnam (dist Cuddalore), Nanguneri (dist Tirunelveli), Cholavaram (dist Tiruvallur), Zone 11 U32 Maduravoyal (dist Chennai), Kothavacherry (dist Cuddalore), Mahabalipuram AWS (dist Chengalpattu), Cuddalore (dist Cuddalore), Panruti (dist Cuddalore), Mylam AWS (dist Villupuram), Vanur (dist Villupuram), Bhuvanagiri (dist Cuddalore), Kurinjipadi (dist Cuddalore), Servalar Dam (dist Tirunelveli), Sriperumbudur (dist Kancheepuram), Poonamalle ARG (dist Tiruvallur), RSCL-2 Kanjanur (dist Villupuram), Cuddalore Collector Office (dist Cuddalore), Zone 11 Valasaravakkam (dist Chennai), Zone 14 Perungudi (dist Chennai), Chembarambakkam ARG (dist Tiruvallur), Mulanur (dist Tiruppur), Thenparanadu (dist Thiruchirappalli), LMOIS Kolapakkam ARG (dist Chengalpattu), Chembarabakkam_REV (dist Tiruvallur), RSCL-2 Mundiampakkam (dist Villupuram), Zone 08 Anna Nagar (dist Chennai), Sendurai (dist Ariyalur), Poonamallee (dist Tiruvallur), Bahour (dist Puducherry), Kurunthancode (dist Kanyakumari), Jaya Engg College AWS (dist Tiruvallur), RSCL-2 Kedar (dist Villupuram), Anna University ARG (dist Chennai), RSCL-2 Nemoor (dist Villupuram), Marakkanam (dist Villupuram), Thirupporur (dist Chengalpattu), Valinokam (dist Ramanathapuram), Anna University (dist Chennai), NIOT_Pallikaranai ARG (dist Chennai), Nagercoil (dist Kanyakumari), Avadi (dist Tiruvallur) 2 each, Chennai (AP) (dist Chennai), Alandur (dist Chennai), Colachel (dist Kanyakumari), Zone 10 Kodambakkam (dist Chennai), RSCL-2 Soorapattu (dist Villupuram), Kodumudiyaru Dam (dist Tirunelveli), Coonoor PTO (dist The Nilgiris), Coonoor AWS (dist The Nilgiris), Mandapam (dist Ramanathapuram), Minnal (dist Ranipet), Zone 09 Teynampet (dist Chennai), Thamaraipakkam (dist Tiruvallur), Chennai(N) AWS (dist Chennai), Coonoor (dist The Nilgiris), Zone 12 D156 Mugalivakkam (dist Chennai), Chennai (N) (dist Chennai), Tiruvarur (dist

Thiruvarur), Pattukottai (dist Thanjavur), Red Hills (dist Tiruvallur), Chidambaram AWS (dist Cuddalore), Kelambakkam (dist Chengalpattu), MGR Nagar (dist Chennai), Anna Nagar (dist Chennai), Valasaravakkam (dist Chennai), Zone 12 Meenambakkam (dist Chennai), RSCL-2 Koliyanur (dist Villupuram), Vepur (dist Cuddalore), Zone 13 Adyar Eco Park (dist Chennai), Neyveli AWS (dist Cuddalore), Nallathangal Reservoir (dist Tiruppur), Neyyoor AWS (dist Kanyakumari), Kalavai PWD (dist Ranipet), Zone 08 Malar Colony (dist Chennai), Tindivanam (dist Villupuram), ACS Medical College ARG (dist Kancheepuram), YMCA Nandnam ARG (dist Chennai), Thirukkanur (dist Puducherry), Puthan Dam (dist Kanyakumari), Uthiramerur (dist Kancheepuram), Cheyyar (dist Tiruvannamalai), Vilupuram (dist Villupuram), Senthurai ARG (dist Ariyalur), Perunchani Dam (dist Kanyakumari), Zone 13 Adyar (dist Chennai), Uthukuli (dist Tiruppur), Ennore AWS (dist Tiruvallur), Hindustan_University (dist Chengalpattu), Vedharanyam AWS (dist Nagapattinam), Zone 03 Puzhal (dist Chennai), Chidambaram (dist Cuddalore), Lalpet (dist Cuddalore), Anaippalayam (dist Karur), Me Mathur (dist Cuddalore), Adayamadai (dist Kanyakumari), RSCL-2 Valavanur (dist Villupuram), Virudachalam (dist Cuddalore), Kodambakkam (dist Chennai), Zone 07 Ambattur (dist Chennai), Cheyyar ARG (dist Tiruvannamalai), Kundrathur (dist Kancheepuram), Tiruvallur (dist Tiruvallur), Arakonam (dist Ranipet), RSCL-3 Anandhapuram (dist Villupuram), Zone 10 Ice House (dist Chennai), DGP Office (dist Chennai), Pelandurai (dist Cuddalore), Kuzhithurai (dist Kanyakumari), Ponneri (dist Tiruvallur), Ariyalur PTO (dist Ariyalur), Dindigul (dist Dindigul), Kattumayilur (dist Cuddalore), Sholayar (dist Coimbatore), Ariyalur Taluk Office (dist Ariyalur), Ayanavaram Taluk Office (dist Chennai), Muthupet (dist Thiruvarur), Adyar (dist Chennai), Musiri (dist Thiruchirappalli), Agaram Seegoor (dist Perambalur), Koratur (dist Tiruvallur), Parangipettai (dist Cuddalore) 1 each.

DESCRIPTION OF TEMPERATURE: (in the plains)

Kanyakumari recorded the highest maximum temperature of **33.8°C**.

Erode recorded the lowest minimum temperature of **18.2°C**.

SYNOPTIC METEOROLOGICAL FEATURE:

Yesterday's **cyclonic circulation** over southwest Bay of Bengal off north Tamil Nadu now lies over south Tamilnadu & neighbourhood at 0.9 km above mean sea level.

Yesterday's **cyclonic circulation** over southeast Arabian Sea off Kerala coast now lies over Lakshadweep and adjoining southeast Arabian Sea and extends upto 3.1 km above mean sea level.

FORECAST & WARNINGS FOR TAMILNADU AND PUDUCHERRY FOR NEXT SEVEN DAYS

<p>Day 1 (14.11.2024)</p>	<p>Light to moderate rain at many places with thunderstorm and lightning at one or two places is likely to occur over Tamilnadu Puducherry and Karaikal area. Heavy rain is likely to occur at isolated places over Kanyakumari, Tirunelveli, Thoothukudi, Ramanathapuram, Tenkasi, Virudhunagar, Madurai, Sivaganga, Pudukkottai, Thanjavur, Tiruvarur, Nagapattinam, Mayiladuthurai, Cuddalore, Theni, Dindigul, Tiruppur, Coimbatore & Nilgiris districts of Tamilnadu and Karaikal area.</p>
<p>Day 2 (15.11.2024)</p>	<p>Light to moderate rain at a few places with thunderstorm and lightning at one or two places is likely to occur over Tamilnadu Puducherry and Karaikal area. Heavy rain is likely to occur at isolated places over Ramanathapuram, Pudukkottai, Thanjavur, Tiruvarur, Nagapattinam, Mayiladuthurai & Cuddalore districts of Tamilnadu and Karaikal area.</p>
<p>Day 3 (16.11.2024)</p>	<p>Light to moderate rain at a few places with thunderstorm and lightning at one or two places is likely to occur over Tamilnadu, Puducherry and Karaikal area.</p>

Day 4 (17.11.2024)	Light to moderate rain at a few places with thunderstorm and lightning at one or two places is likely to occur over Tamilnadu, Puducherry and Karaikal area.
Day 5 (18.11.2024)	Light to moderate rain is likely to occur at a few places over South Tamilnadu and at one or two places over North Tamilnadu, over Puducherry and Karaikal area.
Day 6 (19.11.2024)	Light to moderate rain is likely to occur at one or two places over Tamilnadu, Puducherry and Karaikal area.
Day 7 (20.11.2024)	Light to moderate rain is likely to occur at one or two places over Tamilnadu, Puducherry and Karaikal area.

HEAVY RAINFALL WARNING

Day 1 (14.11.2024)	Heavy rain is likely to occur at isolated places over Kanyakumari, Tirunelveli, Thoothukudi, Ramanathapuram, Tenkasi, Virudhunagar, Madurai, Sivaganga, Pudukkottai, Thanjavur, Tiruvarur, Nagapattinam, Mayiladuthurai, Cuddalore, Theni, Dindigul, Tiruppur, Coimbatore & Nilgiris districts of Tamilnadu and Karaikal area.
Day 2 (15.11.2024)	Heavy rain is likely to occur at isolated places over Ramanathapuram, Pudukkottai, Thanjavur, Tiruvarur, Nagapattinam, Mayiladuthurai & Cuddalore districts of Tamilnadu and Karaikal area.

THUNDERSTORM WARNING

Day 1 (14.11.2024) to Day 4 (17.11.2024)	Thunderstorm with lightning is likely to occur at one or two places over Tamilnadu, Puducherry and Karaikal area.
---	--

LOCAL FORECAST FOR CHENNAI CITY AND NEIGHBOURHOOD

	Day 1 (14.11.2024)	Day 2 (15.11.2024)
Maximum Temperature	32-33°C	32-33°C
Minimum Temperature	25-26°C.	25-26°C.
Sky Condition	Partly cloudy	Partly cloudy
Weather	Moderate rain with thunderstorm & lightning is likely to occur in some areas.	Moderate rain with thunderstorm & lightning is likely to occur in some areas.
24 Hour Rainfall	Moderate rain is likely to occur in some areas.	Moderate rain is likely to occur in some areas.

P. SENTHAMARAI KANNAN
SCIENTIST 'F'
For Deputy Director General of Meteorology,
Regional Meteorological Centre, Chennai

OBSERVATIONS RECORDED AT 0830 HRS IST OF DATE:14-11-2024 (23 Kartika 1946 SAKA)

Stations	Temperature Degrees celsius				Humidity percentage		Rainfall					Weather remarks
	Maximum		Minimum		At 0830 Hrs IST	Dep. from normal	Millimeters			Centimeters		
	Past 24 Hrs	Dep. from normal	Past 24 Hrs	Dep. from normal			Past 24 Hrs	Seasons total from	Departure from normal	Year's total from	Annual normal	
	°C	°C	°C	°C	%	%	mm	1-10-2024	mm	1-1-2024	cm	
Adiramapattinam	30.0	-0.8	24.4	1.2	98	12	2.8	343.6	-15.8	90	124	r*
Chennai	28.9	-1.6	25.7	2.3	95	11	13.6	535.7	18.3	132	140	r*
Chennai_AP	28.7	-1.8	24.9	1.8	94	12	15.1	401.5	-107.3	123	138	r*
Coimbatore_AP	29.0	-1.4	23.0	1.4	88	6	1.2	385.1	166.1	73	59	r*
Coonoor	19.0	-1.0	15.2	2.5	100	18	14.9	597.0	39.8	173	159	r*
Cuddalore	25.6	-4.7	23.6	0.5	98	11	21.6	394.0	-76.6	103	134	r*
Dharmapuri	28.0	-1.5	22.0	1.7	91	10	tr	289.0	56.8	82	91	d*
Erode	32.6	0.4	18.2	-3.6	95	22	1.4	298.0	--	70	--	r*
Kanyakumari	33.8	3.0	24.0	-0.2	86	8	3.6	234.7	-9.2	82	75	r*
KarurParamathi	29.5	-0.6	22.0	0.5	79	-6	4.8	363.4	152.7	85	59	r*
Karaikal	28.3	-1.7	25.4	1.4	85	0	3.7	453.0	-65.4	95	150	r*
Kodaikanal	19.6	2.8	11.5	1.3	100	16	0.0	324.3	-62.3	133	158	
Madurai_City	30.6	-1.1	23.4	0.8	83	5	0.0	404.0	--	84	--	
Madurai_AP	31.8	0.4	24.2	1.0	89	11	0.0	230.4	-34.1	57	85	m*
Nagapattinam	29.3	-0.9	25.1	0.9	83	-4	4.4	321.2	-184.7	85	143	r*
Namakkal	29.4	--	NA	--	NA	--	NA	--	--	--	--	
Palayamkottai	33.5	2.5	25.5	1.5	78	-5	tr	69.8	-223.4	44	73	d*
Pamban	31.8	1.2	25.4	0.1	89	6	3.6	354.2	-8.0	72	91	r*
Parangipettai	26.5	--	25.0	--	83	--	7.8	401.7	-89.4	86	139	r*
Puducherry	26.2	-4.7	24.4	1.7	98	11	25.0	376.6	-80.1	117	134	r*
Salem	30.2	-1.1	23.0	1.6	86	6	tr	425.1	184.4	120	102	d*
Thanjavur	33.0	--	28.2	--	73	--	0.0	198.2	-113.6	50	95	
Thirupattur	27.6	-1.9	24.4	4.3	76	-8	0.0	268.8	81.9	95	95	
Tiruchirappalli_AP	27.7	-3.4	24.6	1.5	90	9	0.5	378.8	152.0	88	87	m*
Tiruthani	29.5	-0.8	23.5	1.8	95	13	3.0	183.2	-85.3	97	101	r*
Tondi	32.1	1.1	25.5	1.6	86	2	0.3	321.1	13.4	91	88	r*
Thoothukudi	33.0	2.3	25.7	1.9	90	6	0.6	123.4	-169.9	40	63	r*
Udagamandalam	19.0	0.0	12.9	3.4	98	9	0.8	208.2	-59.2	113	116	r*
Valparai	26.5	0.4	16.5	1.4	96	7	0.0	665.6	329.9	418	290	
Vellore	29.4	-0.7	24.2	3.3	95	8	2.3	222.1	-7.2	96	103	r*

*Weather at 0830 hours IST. Other remarks refer to preceding 24 hours. NA-Not avble D-Duststorm l-Lightning d-drizzle m-mist s-snow r-rain h-hail f-fog p-shower z-haze t-thunderstorm tr-rainfall not measurable. Tr-rainfall 0.01 to 0.49 cm AP-Airport plus sign omitted when departures above normal.

GOVERNMENT OF INDIA, MINISTRY OF EARTH SCIENCES

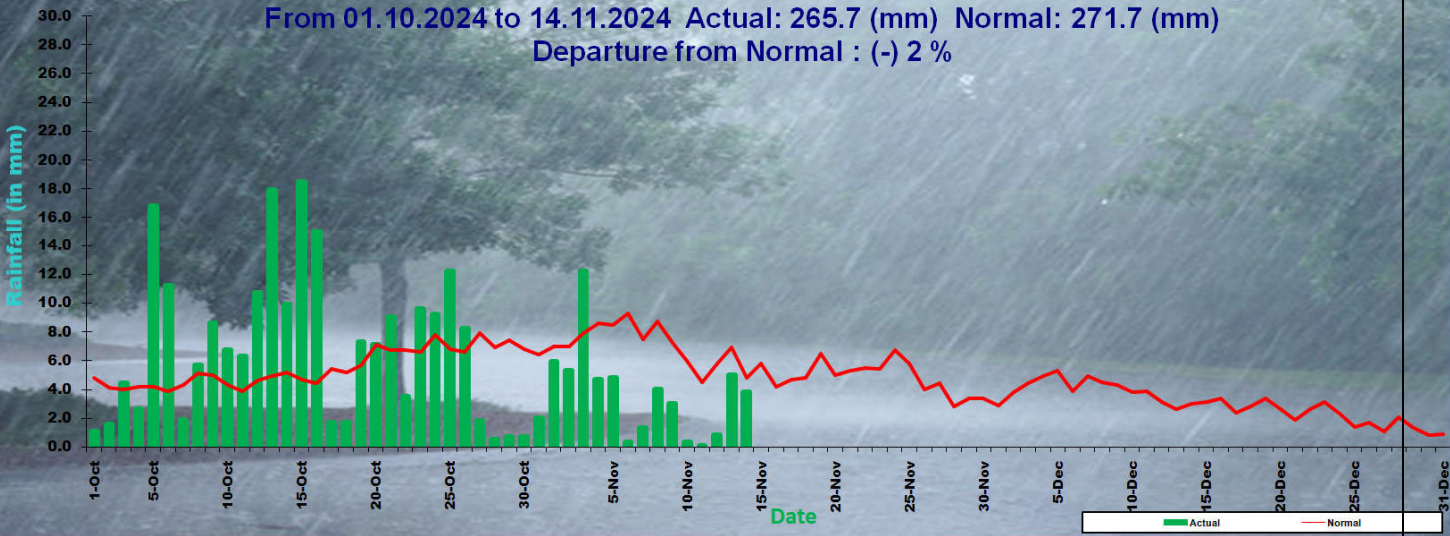
INDIA METEOROLOGICAL DEPARTMENT

REGIONAL METEOROLOGICAL CENTRE, CHENNAI

Districtwise daily / seasonal rainfall distribution for Tamil Nadu & Puducherry

NORTHEAST MONSOON RAINFALL 2024		14.11.2024			From 01.10.2024 to 14.11.2024		
CODE	NAME	ACTUAL in mm**	NORMAL in mm	PDN*	ACTUAL in mm	NORMAL in mm	PDN*
	STATES						
31	TAMIL NADU	3.8	4.8	-21	265.3	271.0	-2
	MET. SUBDIVISIONS						
31	TAMIL NADU & PUDUCHERRY						
534	ARIYALUR	6.5	3.9	68	214.3	264.0	-19
687	CHENGALPATTU	18.1	8.7	108	288.4	395.6	-27
461	CHENNAI	13.5	14.8	-9	504.3	500.0	1
462	COIMBATORE	0.8	3.3	-75	412.6	245.2	68
463	CUDDALORE	14.3	9.5	51	272.1	372.9	-27
464	DHARMAPURI	0.8	2.3	-65	226.8	227.5	0
465	DINDIGUL	1.2	4.8	-75	355.7	297.8	19
466	ERODE	0.4	2.7	-85	242.5	224.5	8
688	KALLAKURICHI	1.7	5.2	-67	192.5	255.0	-25
467	KANCHEEPURAM	10.2	7.5	35	210.8	338.9	-38
468	KANYAKUMARI	6.3	8.7	-28	448.6	384.5	17
636	KARAIKAL	3.7	7.4	-50	452.6	518.4	-13
469	KARUR	1.2	2.2	-44	228.7	201.6	13
470	KRISHNAGIRI	0.4	1.6	-74	275.2	211.5	30
471	MADURAI	0.0	3.4	-100	365.7	260.1	41
695	MAYILADUTHURAI	1.8	7.5	-76	352.5	448.1	-21
472	NAGAPATTINAM	13.9	9.5	47	288.7	462.6	-38
473	NAMAKKAL	0.3	2.5	-88	228.1	194.8	17
474	NILGIRIS	2.5	6.6	-62	349.9	348.3	0
475	PERAMBALUR	6.1	2.6	134	199.5	259.9	-23
476	PUDUCHERRY	49.8	8.9	459	347.4	456.7	-24
477	PUDUKKOTTAI	0.0	3.8	-100	277.1	213.0	30
478	RAMANATHAPURAM	2.0	4.5	-56	260.3	299.0	-13
689	RANIPET	6.2	5.1	22	192.8	239.8	-20
479	SALEM	0.7	2.3	-68	263.8	230.7	14
480	SIVAGANGA	0.0	3.4	-100	366.1	268.5	36
690	TENKASI	0.1	7.8	-99	152.8	300.2	-49
481	THANJAVUR	1.9	5.5	-65	276.6	298.7	-7
482	THENI	0.1	5.3	-99	259.7	254.7	2
483	TIRUNELVELI	27.0	10.0	170	191.3	288.1	-34
691	TIRUPATTUR	0.8	2.6	-70	288.5	183.6	57
535	TIRUPPUR	4.0	2.6	53	306.8	218.0	41
484	TIRUVALLUR	9.8	10.7	-8	346.5	371.3	-7
485	TIRUVANNAMALAI	3.8	5.4	-30	215.8	269.4	-20
486	TIRUVARUR	3.5	7.0	-49	279.9	353.0	-21
488	TOOTHUKUDI	0.0	4.1	-99	101.7	260.1	-61
487	TRICHY	2.6	3.4	-23	266.7	222.9	20
489	VELLORE	2.4	5.0	-52	233.9	232.3	1
490	VILLUPURAM	10.7	7.0	53	214.0	295.4	-28
491	VIRUDHUNAGAR	0.0	4.2	-100	189.8	263.2	-28
	SUBDIVISION RAINFALL	3.9	4.8	-19	265.7	271.7	-2
LEGEND	PDN*	Percentage Departure from Normal					
	**	Rainfall for the 24 hrs ending at 0830 hrs of date					

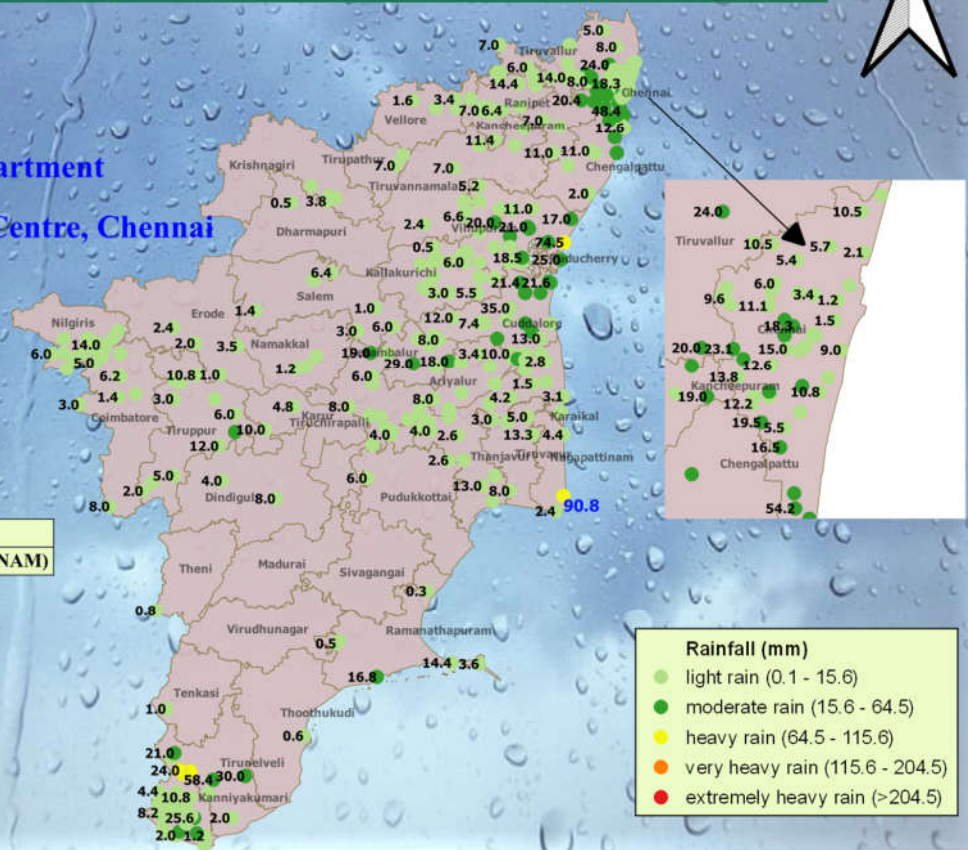
Northeast Monsoon Rainfall 2024 for Tamilnadu and Puducherry
 From 01.10.2024 to 14.11.2024 Actual: 265.7 (mm) Normal: 271.7 (mm)
 Departure from Normal : (-) 2 %



**Realised rainfall (mm) during the past 24 hours
 (upto 08:30 IST of 14/11/2024)**



India Meteorological Department
 Regional Meteorological Centre, Chennai
 Date : 14/11/2024



Highest Rainfall recorded(mm): 90.8
 Place: VEDARANYAM (NAGAPATTINAM)



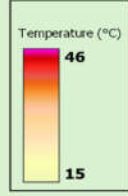
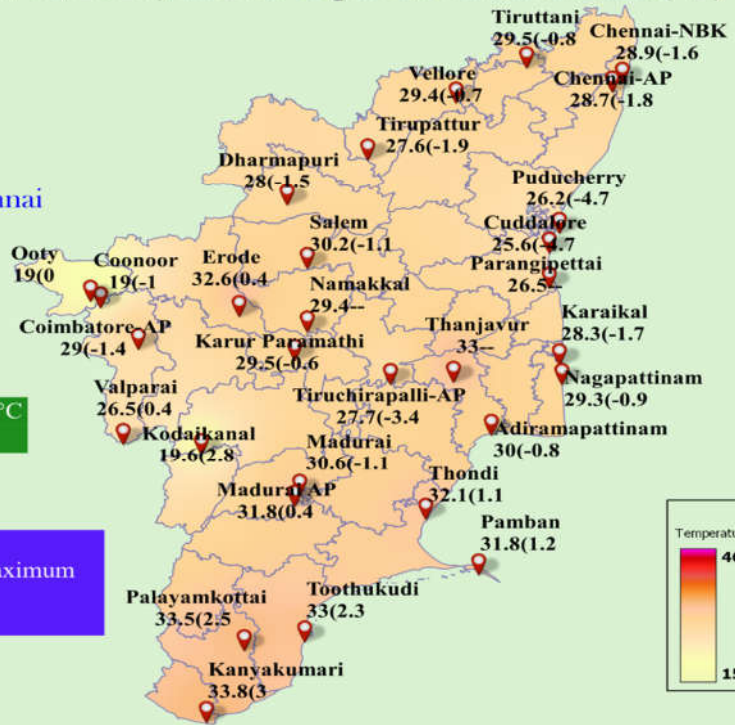
Realised Maximum Temperature (°C) in the past 24 Hrs (upto 0830 IST of 14/11/2024) and its departure from normal(°C)



India Meteorological Department
Regional Meteorological Centre, Chennai
Date: 14/11/2024

The highest temperature recorded : 33.8°C
Place : Kanyakumari

N.B. The departure from normal maximum temperature is given in brackets.



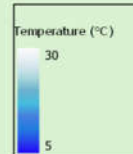
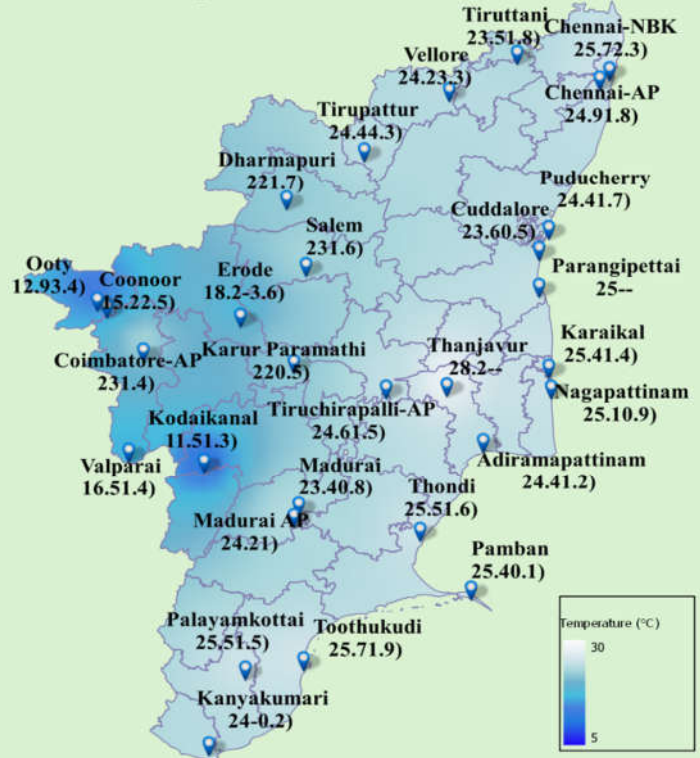
Realised Minimum Temperature (°C) in the past 24 Hrs (upto 0830 IST of 14/11/2024) and its departure from normal(°C)



India Meteorological Department
Regional Meteorological Centre, Chennai
Date : 14/11/2024

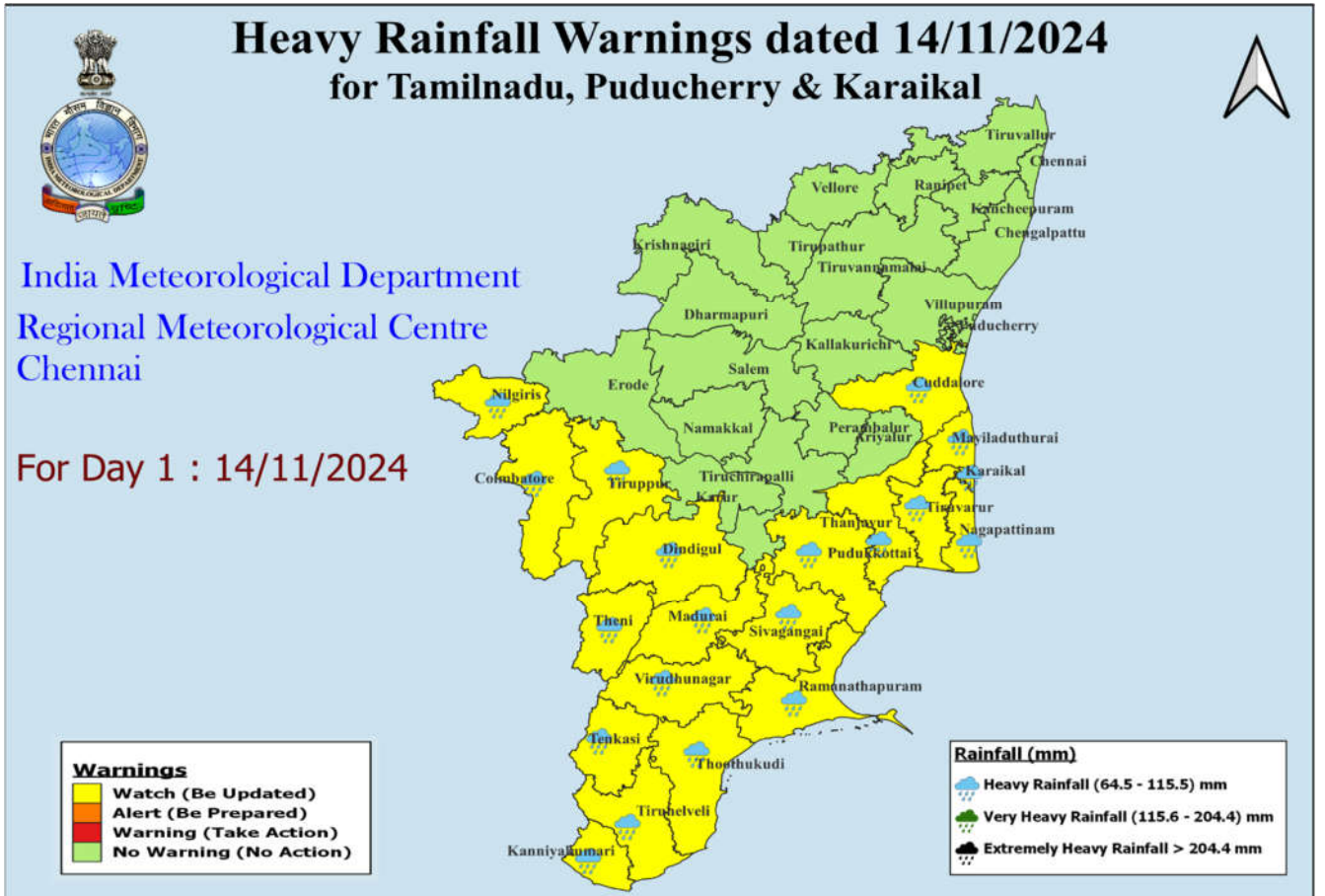
The lowest temperature recorded in the plains : 18.2°C
Place : Erode
The lowest temperature recorded in the hilly region : 11.5°C
Place : Kodaikanal

N.B. The departure from normal minimum temperature is given in brackets.

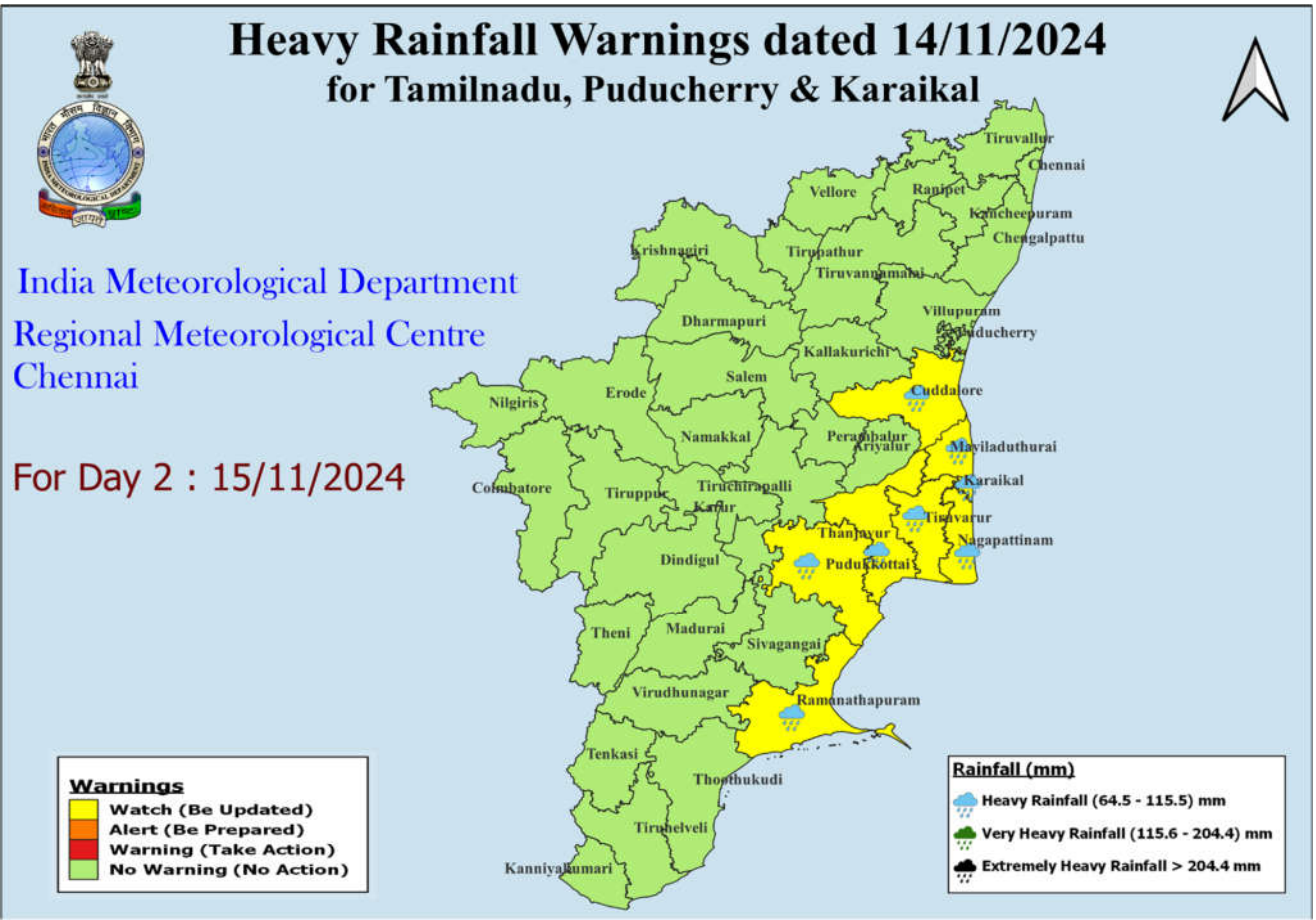


HEAVY RAINFALL WARNING

Day 1: 14.11.2024



Day 2: 15.11.2024



Legends:

Day: 08:30 IST to 08:30 IST of next day

North Tamil Nadu (NTN) districts	Chennai, Kancheepuram, Chengalpattu, Tiruvallur, Cuddalore, Villupuram, Tirupattur, Vellore, Ranipet, Kallakurichi, Tiruvannamalai, Krishnagiri, Dharmapuri, Salem, Namakkal, Karur, Erode, Thanjavur, Tiruvarur, Mayiladuthurai, Nagapattinam, Pudukottai, Nilgiris, Coimbatore, Tiruppur, Tiruchirapalli, Ariyalur, Perambalur.
South Tamil Nadu (STN) districts	Dindigul, Theni, Virudhunagar, Madurai, Sivagangai, Ramanathapuram, Thoothukudi, Thenkasi, Tirunelveli, Kanyakumari.
Interior Tamil Nadu (ITN) districts	Tirupattur, Vellore, Ranipet, Kallakurichi, Tiruvannamalai, Kancheepuram, Krishnagiri, Dharmapuri, Salem, Namakkal, Karur, Erode, Nilgiris, Coimbatore, Tiruppur, Tiruchirapalli, Ariyalur, Perambalur, Sivagangai, Virudhunagar, Theni, Dindigul, Madurai, Thenkasi.
North interior Tamil Nadu (NITN) districts	Tirupattur, Vellore, Ranipet, Kallakurichi, Tiruvannamalai, Kancheepuram, Krishnagiri, Dharmapuri, Salem, Namakkal, Karur, Erode, Nilgiris, Coimbatore, Tiruppur, Tiruchirapalli, Ariyalur and Perambalur.
South interior Tamil Nadu (SITN) districts	Sivagangai, Virudhunagar, Theni, Dindigul, Madurai, Thenkasi.
Coastal Tamil Nadu (CTN) districts	Tiruvallur, Chennai, Chengalpattu, Villupuram, Cuddalore, Thanjavur, Tiruvarur, Mayiladuthurai, Nagapattinam, Pudukottai, Ramanathapuram, Thoothukudi, Tirunelveli, Kanyakumari.
North Coastal Tamil Nadu (NCTN) districts	Tiruvallur, Chennai, Chengalpattu, Villupuram, Cuddalore, Thanjavur, Tiruvarur, Mayiladuthurai, Nagapattinam, Pudukottai.
South Coastal Tamil Nadu (SCTN) districts	Ramanathapuram, Thoothukudi, Tirunelveli, Kanyakumari.
Delta districts	Thanjavur, Tiruvarur, Nagapattinam, Mayiladuthurai, Pudukottai and Karaikal area.
Delta and Adjoining districts	Thanjavur, Tiruvarur, Nagapattinam, Mayiladuthurai, Pudukottai, Karaikal and Tiruchirapalli, Perambalur, Ariyalur, Cuddalore.
Western Ghat districts	Nilgiris, Coimbatore, Tiruppur, Theni, Dindigul, Thenkasi, Virudhunagar
PDC	Puducherry and Karaikal

For more details visit www.mausam.imd.gov.in/chennai