



# Coronavirus disease (COVID-19)

## Situation Report – 152

Data as received by WHO from national authorities by 10:00 CEST, 20 June 2020

### Highlights

WHO Director-General Dr Tedros, in his regular [media briefing](#) yesterday, highlighted that today is World Refugee Day and highlighted the risks of COVID-19 for some of the world's most vulnerable people. He also stressed the shared duty to do everything we can to prevent, detect and respond to transmission of COVID-19 among refugee populations.

WHO has published '[Criteria for releasing COVID-19 patients from isolation](#)' which provides an update to previous guidance. The updated criteria reflect recent findings that patients whose symptoms have resolved may still test positive for the COVID-19 virus for many weeks. Despite this positive test result, these patients are not likely to be infectious and therefore are unlikely to be able to transmit the virus to another person.

WHO has published an [Emergency Global Supply Chain System \(COVID-19\) catalogue](#). This catalogue lists all medical devices, including personal protective equipment, medical equipment, medical consumables, single use devices, laboratory and test-related devices that may be requested through the COVID-19 Supply Portal.

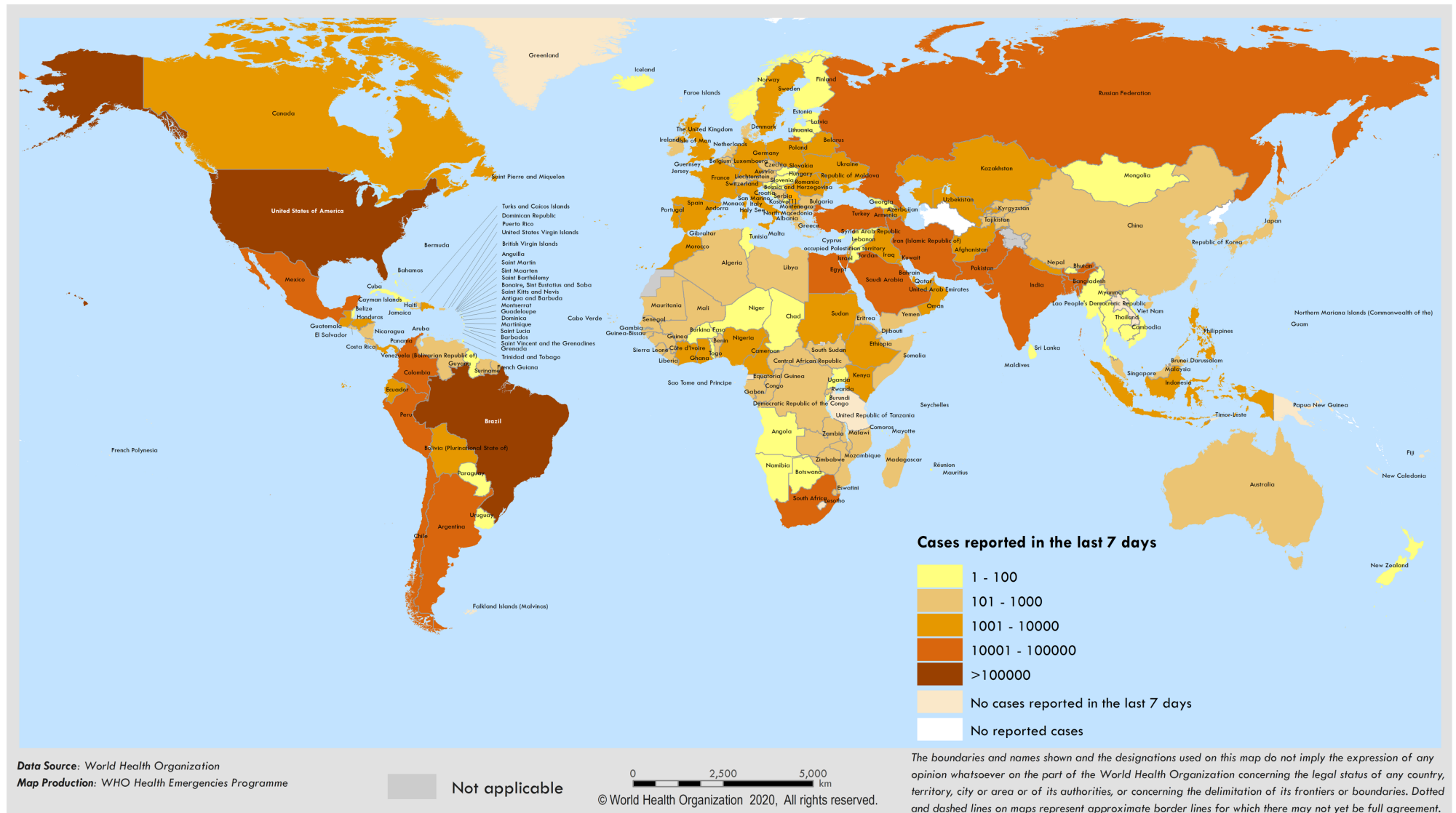
### Situation in numbers (by WHO Region)

Total (new cases in last 24 hours)

<b>Globally</b>	8 525 042 cases (138 980)	456 973 deaths (6 271)
<b>Africa</b>	208 535 cases (7 357)	4 750 deaths (155)
<b>Americas</b>	4 163 813 cases (71 287)	215 903 deaths (3 386)
<b>Eastern Mediterranean</b>	878 428 cases (21 778)	19 560 deaths (519)
<b>Europe</b>	2 509 750 cases (18 313)	192 645 deaths (1 726)
<b>South-East Asia</b>	560 285 cases (19 244)	16 814 deaths (454)
<b>Western Pacific</b>	203 490 cases (1 001)	7 288 deaths (31)

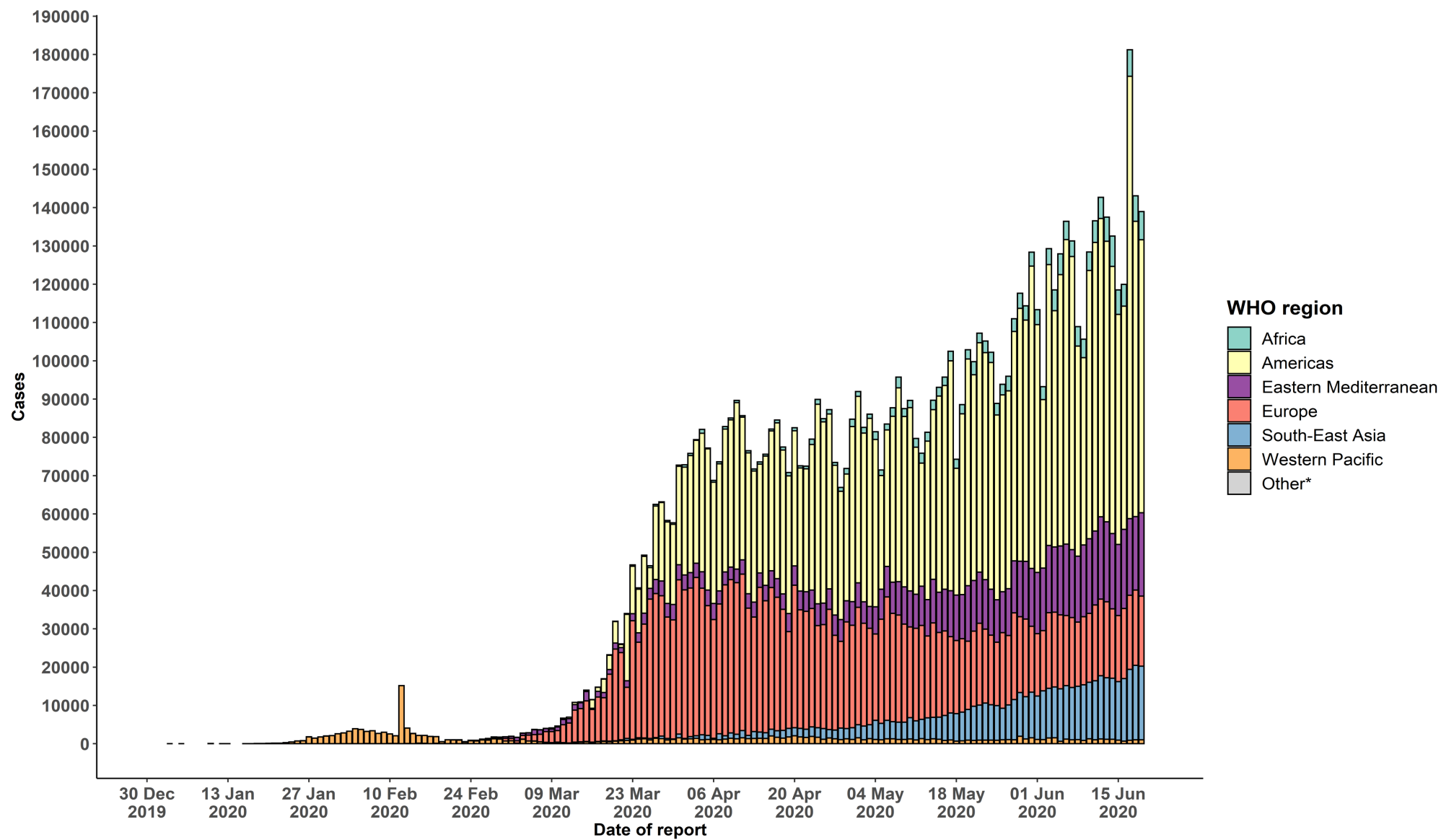
# Surveillance

Figure 1. Number of confirmed COVID-19 cases reported in the last seven days by country, territory or area, 14 June to 20 June\*\*



\*\*See [Annex 1](#) for data, table and figure notes.

Figure 2. Number of confirmed COVID-19 cases, by date of report and WHO region, 30 December through 20 June\*\*



\*\*See [Annex 1](#) for data, table and figure notes.

**Table 1. Countries, territories or areas with reported laboratory-confirmed COVID-19 cases and deaths, by WHO region. Data as of 10 AM CEST, 20 June 2020\*\***

Reporting Country/ Territory/Area	Total confirmed cases	Total confirmed new cases	Total deaths	Total new deaths	Transmission classification <sup>1</sup>	Days since last reported case
Africa						
South Africa	87 715	3 825	1 831	94	Community transmission	0
Nigeria	19 147	667	487	12	Community transmission	0
Ghana	13 203	274	70	4	Community transmission	0
Algeria	11 504	119	825	14	Community transmission	0
Cameroon	10 638	774	282	6	Community transmission	0
Côte d'Ivoire	6 874	430	49	0	Community transmission	0
Senegal	5 639	164	79	3	Community transmission	0
Democratic Republic of the Congo	5 476	194	121	5	Community transmission	0
Guinea	4 904	63	27	1	Community transmission	0
Kenya	4 374	117	119	2	Community transmission	0
Gabon	4 340	0	32	0	Community transmission	1
Ethiopia	4 070	116	72	7	Community transmission	0
Central African Republic	2 605	0	19	0	Community transmission	1
Mauritania	2 424	201	97	2	Clusters of cases	0
Mali	1 923	17	108	1	Community transmission	0
South Sudan	1 830	17	32	1	Clusters of cases	0
Guinea-Bissau	1 512	0	16	0	Community transmission	1
Madagascar	1 443	40	13	0	Clusters of cases	0
Zambia	1 430	14	11	0	Community transmission	0
Sierra Leone	1 298	26	53	2	Community transmission	0
Equatorial Guinea	1 043	0	12	0	Community transmission	27

Reporting Country/ Territory/Area	Total confirmed cases	Total confirmed new cases	Total deaths	Total new deaths	Transmission classification <sup>1</sup>	Days since last reported case
Niger	1 026	6	67	0	Community transmission	0
Burkina Faso	901	2	53	0	Community transmission	0
Congo	883	0	27	0	Community transmission	4
Chad	858	4	74	0	Community transmission	0
Cabo Verde	848	25	8	1	Clusters of cases	0
Uganda	823	0	0	0	Sporadic cases	6
Mozambique	668	6	4	0	Clusters of cases	0
Rwanda	661	15	2	0	Sporadic cases	0
Benin	650	53	11	0	Community transmission	0
Malawi	648	56	8	0	Clusters of cases	0
Eswatini	623	37	4	0	Clusters of cases	0
Liberia	581	39	33	0	Community transmission	0
Togo	555	11	13	0	Community transmission	0
United Republic of Tanzania	509	0	21	0	Community transmission	43
Zimbabwe	479	16	4	0	Sporadic cases	0
Sao Tome and Principe	388	0	10	0	Clusters of cases	2
Mauritius	337	0	10	0	Clusters of cases	14
Comoros	210	0	5	0	Community transmission	1
Angola	166	0	8	0	Clusters of cases	1
Eritrea	142	0	0	0	Sporadic cases	1
Burundi	104	0	1	0	Clusters of cases	4
Botswana	89	10	1	0	Clusters of cases	0
Namibia	45	6	0	0	Sporadic cases	0

Reporting Country/ Territory/Area	Total confirmed cases	Total confirmed new cases	Total deaths	Total new deaths	Transmission classification <sup>i</sup>	Days since last reported case
Gambia	36	0	1	0	Sporadic cases	1
Seychelles	11	0	0	0	Clusters of cases	74
Lesotho	4	0	0	0	Sporadic cases	16
<b>Territories<sup>ii</sup></b>						
Mayotte	2 394	11	29	0	Clusters of cases	0
Réunion	504	2	1	0	Clusters of cases	0
<b>Americas</b>						
United States of America	2 172 212	23 046	118 205	733	Community transmission	0
Brazil	978 142	22 765	47 748	1 238	Community transmission	0
Peru	244 388	3 480	7 461	204	Community transmission	0
Chile	231 393	6 290	4 093	252	Community transmission	0
Mexico	165 455	5 662	19 747	667	Community transmission	0
Canada	100 220	367	8 300	46	Community transmission	0
Colombia	60 217	3 171	1 950	86	Community transmission	0
Ecuador	49 731	634	4 156	69	Community transmission	0
Argentina	37 510	1 958	954	25	Community transmission	0
Dominican Republic	25 068	423	647	12	Community transmission	0
Panama	23 351	754	475	5	Community transmission	0
Bolivia (Plurinational State of)	21 499	814	697	18	Community transmission	0
Guatemala	11 868	617	449	17	Community transmission	0
Honduras	1 0739	440	343	7	Community transmission	0
Haiti	4 916	228	84	2	Community transmission	0
El Salvador	4 329	129	86	4	Community transmission	0
Venezuela (Bolivarian Republic of)	3 484	98	28	0	Community transmission	0

Reporting Country/ Territory/Area	Total confirmed cases	Total confirmed new cases	Total deaths	Total new deaths	Transmission classification <sup>i</sup>	Days since last reported case
Cuba	2 305	10	85	0	Clusters of cases	0
Nicaragua	2 014	0	64	0	Community transmission	2
Costa Rica	1 939	68	12	0	Clusters of cases	0
Paraguay	1 336	6	13	0	Community transmission	0
Uruguay	850	1	24	0	Clusters of cases	0
Jamaica	638	12	10	0	Clusters of cases	0
Suriname	277	16	8	1	Clusters of cases	0
Guyana	183	0	12	0	Clusters of cases	1
Trinidad and Tobago	123	0	8	0	Sporadic cases	4
Bahamas	104	0	11	0	Clusters of cases	4
Barbados	97	0	7	0	Clusters of cases	4
Saint Vincent and the Grenadines	29	0	0	0	Sporadic cases	2
Antigua and Barbuda	26	0	3	0	Clusters of cases	6
Grenada	23	0	0	0	Clusters of cases	24
Belize	22	0	2	0	Sporadic cases	2
Saint Lucia	19	0	0	0	Sporadic cases	14
Dominica	18	0	0	0	Clusters of cases	7
Saint Kitts and Nevis	15	0	0	0	No cases	60
<b>Territories<sup>ii</sup></b>						
Puerto Rico	6 195	84	147	0	Community transmission	0
French Guiana	1 969	211	5	0	Community transmission	0
Martinique	221	0	14	0	Clusters of cases	1
Cayman Islands	193	0	1	0	Clusters of cases	2
Guadeloupe	174	3	14	0	Clusters of cases	0

Reporting Country/ Territory/Area	Total confirmed cases	Total confirmed new cases	Total deaths	Total new deaths	Transmission classification <sup>1</sup>	Days since last reported case
Bermuda	144	0	9	0	Clusters of cases	5
Aruba	101	0	3	0	No cases	45
Sint Maarten	77	0	15	0	Sporadic cases	14
United States Virgin Islands	73	0	6	0	Clusters of cases	3
Saint Martin	42	0	3	0	Sporadic cases	3
Curaçao	23	0	1	0	Sporadic cases	2
Falkland Islands (Malvinas)	13	0	0	0	No cases	55
Turks and Caicos Islands	12	0	1	0	No cases	53
Montserrat	11	0	1	0	No cases	67
British Virgin Islands	8	0	1	0	No cases	35
Bonaire, Sint Eustatius and Saba	7	0	0	0	No cases	25
Saint Barthélemy	6	0	0	0	No cases	81
Anguilla	3	0	0	0	No cases	77
Saint Pierre and Miquelon	1	0	0	0	No cases	73
<b>Eastern Mediterranean</b>						
Iran (Islamic Republic of)	200 262	2 615	9 392	120	Community transmission	0
Pakistan	171 666	6 604	3 382	153	Clusters of cases	0
Saudi Arabia	150 292	4 301	1 184	45	Clusters of cases	0
Qatar	85 462	1 021	93	7	Community transmission	0
Egypt	52 211	1 774	2 017	79	Clusters of cases	0
United Arab Emirates	44 145	393	300	2	Pending	0
Kuwait	38 678	604	313	5	Clusters of cases	0
Afghanistan	28 297	419	548	0	Clusters of cases	0
Oman	27 670	852	125	6	Clusters of cases	0



Reporting Country/ Territory/Area	Total confirmed cases	Total confirmed new cases	Total deaths	Total new deaths	Transmission classification <sup>i</sup>	Days since last reported case
Iraq	27 352	1 635	925	69	Clusters of cases	0
Bahrain	20 916	486	57	2	Clusters of cases	0
Morocco	9 613	539	213	0	Clusters of cases	0
Sudan	8 416	396	513	26	Community transmission	0
Djibouti	4 565	8	45	2	Clusters of cases	0
Somalia	2 719	0	88	0	Sporadic cases	1
Lebanon	1 510	15	32	0	Clusters of cases	0
Tunisia	1 146	14	50	0	Community transmission	0
Jordan	1 008	7	9	0	Clusters of cases	0
Yemen	923	10	252	3	Pending	0
Libya	520	10	10	0	Clusters of cases	0
Syrian Arab Republic	187	0	7	0	Community transmission	1
<b>Territories<sup>ii</sup></b>						
occupied Palestinian territory	870	75	5	0	Clusters of cases	0
<b>Europe</b>						
Russian Federation	576 952	7 889	8 002	161	Clusters of cases	0
The United Kingdom	301 819	1 346	42 461	173	Community transmission	0
Spain	245 575	307	28 315	1179	Community transmission	0
Italy	238 011	0	34 561	47	Community transmission	1
Germany	189 135	601	8 883	11	Clusters of cases	0
Turkey	1852 45	1214	4 905	23	Community transmission	0
France	154 141	584	29 551	14	Community transmission	0
Belgium	60 476	128	9 695	12	Community transmission	0
Belarus	57 333	676	337	6	Community transmission	0

Reporting Country/ Territory/Area	Total confirmed cases	Total confirmed new cases	Total deaths	Total new deaths	Transmission classification <sup>1</sup>	Days since last reported case
Sweden	56 043	0	5 053	0	Community transmission	1
Netherlands	49 426	107	6 081	3	Community transmission	0
Portugal	38 464	375	1 527	3	Community transmission	0
Ukraine	35 825	841	994	9	Community transmission	0
Poland	31 316	301	1 334	18	Community transmission	0
Switzerland	31 217	100	1 680	3	Community transmission	0
Ireland	25 368	13	1 714	0	Community transmission	0
Romania	23 400	320	1 484	11	Community transmission	0
Israel	20 188	312	304	1	Pending	0
Armenia	19 708	551	332	13	Community transmission	0
Austria	17 185	30	688	0	Community transmission	0
Kazakhstan	16 779	428	113	8	Clusters of cases	0
Republic of Moldova	13 556	450	458	9	Community transmission	0
Serbia	12 709	93	259	1	Pending	0
Denmark	12 391	47	600	0	Community transmission	0
Azerbaijan	11 767	438	143	4	Clusters of cases	0
Czechia	10 460	230	335	1	Clusters of cases	0
Norway	8 692	0	244	0	Clusters of cases	1
Finland	7 133	16	326	0	Pending	0
Uzbekistan	6 025	170	19	0	Clusters of cases	0
Tajikistan	5 338	59	51	0	Pending	0
North Macedonia	4 820	156	222	6	Clusters of cases	0
Luxembourg	4 099	8	110	0	Clusters of cases	0
Hungary	4 086	5	570	2	Community transmission	0

Reporting Country/ Territory/Area	Total confirmed cases	Total confirmed new cases	Total deaths	Total new deaths	Transmission classification <sup>i</sup>	Days since last reported case
Bulgaria	3 755	81	193	3	Clusters of cases	0
Bosnia and Herzegovina	3 288	86	168	1	Community transmission	0
Greece	3 237	10	189	1	Clusters of cases	0
Kyrgyzstan	2 981	192	35	3	Clusters of cases	0
Croatia	2 280	11	107	0	Sporadic cases	0
Estonia	1 979	2	69	0	Clusters of cases	0
Albania	1 838	0	42	0	Clusters of cases	1
Iceland	1 819	3	10	0	Community transmission	0
Lithuania	1 792	8	76	0	Community transmission	0
Slovakia	1 576	14	28	0	Clusters of cases	0
Slovenia	1 513	2	109	0	Clusters of cases	0
Latvia	1 110	2	30	0	Sporadic cases	0
Cyprus	985	0	19	0	Clusters of cases	4
Georgia	898	3	14	0	Community transmission	0
Andorra	855	0	52	0	Community transmission	1
San Marino	713	4	42	0	Community transmission	0
Malta	663	0	9	0	Sporadic cases	1
Montenegro	355	18	9	0	Clusters of cases	0
Monaco	99	0	1	0	Sporadic cases	13
Liechtenstein	83	0	1	0	Pending	55
Holy See	12	0	0	0	Sporadic cases	44
<b>Territories<sup>ii</sup></b>						
Kosovo <sup>[1]</sup>	1 955	82	24	0	Community transmission	0

Reporting Country/ Territory/Area	Total confirmed cases	Total confirmed new cases	Total deaths	Total new deaths	Transmission classification <sup>1</sup>	Days since last reported case
Isle of Man	336	0	24	0	Pending	29
Jersey	318	0	30	0	Community transmission	1
Guernsey	252	0	13	0	Community transmission	48
Faroe Islands	187	0	0	0	Pending	57
Gibraltar	176	0	0	0	Clusters of cases	11
Greenland	13	0	0	0	Pending	22
<b>South-East Asia</b>						
India	395 048	14 516	12 948	375	Clusters of cases	0
Bangladesh	105 535	3 243	1 388	45	Community transmission	0
Indonesia	43 803	1 041	2 373	34	Community transmission	0
Nepal	8 274	426	22	0	Sporadic cases	0
Thailand	3 147	1	58	0	Clusters of cases	0
Maldives	2 150	13	8	0	Clusters of cases	0
Sri Lanka	1 950	3	11	0	Clusters of cases	0
Myanmar	286	0	6	0	Clusters of cases	1
Bhutan	68	1	0	0	Sporadic cases	0
Timor-Leste	24	0	0	0	Clusters of cases	57
<b>Western Pacific</b>						
China	84 970	30	4 645	0	Clusters of cases	0
Singapore	41 615	142	26	0	Clusters of cases	0
Philippines	28 459	660	1 130	14	Community transmission	0
Japan	17 799	59	952	17	Clusters of cases	0
Republic of Korea	12 373	67	280	0	Clusters of cases	0

Reporting Country/ Territory/Area	Total confirmed cases	Total confirmed new cases	Total deaths	Total new deaths	Transmission classification <sup>i</sup>	Days since last reported case
Malaysia	8 535	6	121	0	Clusters of cases	0
Australia	7 409	18	102	0	Clusters of cases	0
New Zealand	1 159	2	22	0	Clusters of cases	0
Viet Nam	349	7	0	0	Clusters of cases	0
Mongolia	204	3	0	0	Sporadic cases	0
Brunei Darussalam	141	0	3	0	Clusters of cases	43
Cambodia	129	0	0	0	Sporadic cases	2
Lao People's Democratic Republic	19	0	0	0	Sporadic cases	68
Fiji	18	0	0	0	Sporadic cases	60
Papua New Guinea	8	0	0	0	Sporadic cases	58
<b>Territories<sup>ii</sup></b>						
Guam	192	7	5	0	Clusters of cases	0
French Polynesia	60	0	0	0	Sporadic cases	45
Northern Mariana Islands (Commonwealth of the)	30	0	2	0	Pending	10
New Caledonia	21	0	0	0	Sporadic cases	10
<b>Subtotal for all regions</b>	<b>8 524 301</b>	<b>138 980</b>	<b>456 960</b>	<b>6 271</b>		
Other*	741	0	13	0	Not applicable	-
<b>Grand total</b>	<b>8 525 042</b>	<b>138 980</b>	<b>456 973</b>	<b>6 271</b>		

\*\*See [Annex 1](#) for data, table and figure notes.

---

## Technical guidance and other resources

- To view all technical guidance documents regarding COVID-19, please go to [this webpage](#).
- Updates from WHO regional offices
  - [WHO AFRO](#)
  - [WHO EMRO](#)
  - [WHO EURO](#)
  - [WHO PAHO](#)
  - [WHO SEARO](#)
  - [WHO WPRO](#)
- [Research and Development](#)
- [Online courses on COVID-19](#) and in [additional national languages](#)
- [The Strategic Preparedness and Response Plan](#) (SPRP) outlining the support the international community can provide to all countries to prepare and respond to the virus
- [WHO Coronavirus Disease \(COVID-19\) Dashboard](#)
- [Weekly COVID-19 Operations Updates](#)

---

## Recommendations and advice for the public

- [Protect yourself](#)
- [Questions and answers](#)
- [Travel advice](#)
- [EPI-WIN](#): tailored information for individuals, organizations and communities

---

## Case definitions

WHO periodically updates the [Global Surveillance for human infection with coronavirus disease \(COVID-19\)](#) document which includes surveillance definitions.

### Definition of COVID-19 death

A COVID-19 death is defined for surveillance purposes as a death resulting from a clinically compatible illness in a probable or confirmed COVID-19 case, unless there is a clear alternative cause of death that cannot be related to COVID-19 disease (e.g. trauma). There should be no period of complete recovery between the illness and death.

Further guidance for certification and classification (coding) of COVID-19 as cause of death is available [here](#) and [here](#).

---

## Annex 1: Data, table and figure notes

Caution must be taken when interpreting all data presented. Differences are to be expected between information products published by WHO, national public health authorities, and other sources using different inclusion criteria and different data cut-off times. While steps are taken to ensure accuracy and reliability, all data are subject to continuous verification and change. Case detection, definitions, testing strategies, reporting practice, and lag times differ between countries/territories/areas. These factors, amongst others, influence the counts presented, with variable underestimation of true case and death counts, and variable delays to reflecting these data at global level.

The designations employed, and the presentation of these materials do not imply the expression of any opinion whatsoever on the part of WHO concerning the legal status of any country, territory or area or of its authorities, or concerning the delimitation of its frontiers or boundaries. Dotted and dashed lines on maps represent approximate border lines for which there may not yet be full agreement. Countries, territories and areas are arranged under the administering WHO region.

The mention of specific companies or of certain manufacturers' products does not imply that they are endorsed or recommended by WHO in preference to others of a similar nature that are not mentioned. Errors and omissions excepted, the names of proprietary products are distinguished by initial capital letters.

[1] All references to Kosovo should be understood to be in the context of the United Nations Security Council resolution 1244 (1999). In the map, number of cases of Serbia and Kosovo (UNSCR 1244, 1999) have been aggregated for visualization purposes.

Counts reflect laboratory-confirmed cases and deaths, based on [WHO case definitions](#), unless stated otherwise (see Country, territory, or area-specific updates and errata), and include both domestic and repatriated cases.

Other\*: includes cases reported from international conveyances.

Due to the recent trend of countries conducting data reconciliation exercises which remove large numbers of cases or deaths from their total counts, WHO will now display such data as negative numbers in the "new cases" / "new deaths" columns as appropriate. This will aid readers in identifying when such adjustments occur. When additional details become available that allow the subtractions to be suitably apportioned to previous days, graphics will be updated accordingly. Prior situation reports will not be edited; see [covid19.who.int](https://covid19.who.int) for the most up-to-date data.

## Additional table notes

<sup>i</sup> Transmission classification is based on a process of country/territory/area self-reporting. Classifications are reviewed on a weekly basis and may be revised as new information becomes available. and. Differing degrees of transmission may be present within countries/territories/areas; classification is based on the highest category reported within a country/territory/area. Categories:

- No cases: with no confirmed cases
- Sporadic cases: with one or more cases, imported or locally detected
- Clusters of cases: experiencing cases, clustered in time, geographic location and/or by common exposures
- Community transmission: experiencing larger outbreaks of local transmission defined through an assessment of factors including, but not limited to: large numbers of cases not linkable to transmission chains; large numbers of cases from sentinel lab surveillance; and/or multiple unrelated clusters in several areas of the country/territory/area
- Pending: transmission classification has not been reported to WHO

ii "Territories" include territories, areas, overseas dependencies and other jurisdictions of similar status.

## Country, territory, or area-specific updates and errata

- **Update 20 June 2020, Italy:** Counts adjusted retrospectively by national authorities: 148 cases have been excluded on 19 June.
- **Update 20 June 2020, Germany:** Counts adjusted retrospectively by national authorities: 770 cases and 16 deaths have been added on 19 June.