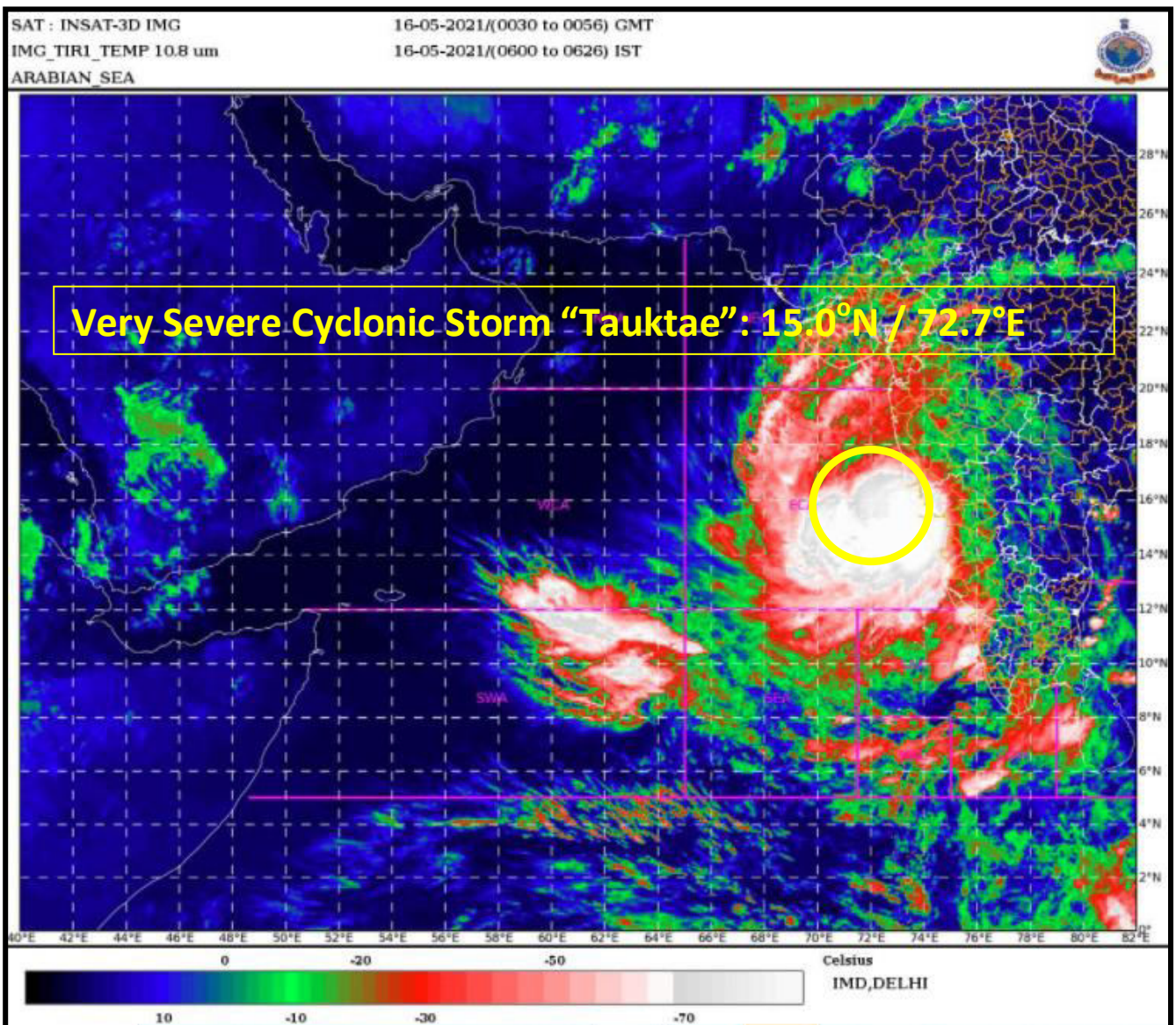




India Meteorological Department  
(Ministry of Earth Sciences)

TIME OF ISSUE: 0810 HOURS IST  
INDIA METEOROLOGICAL DEPARTMENT

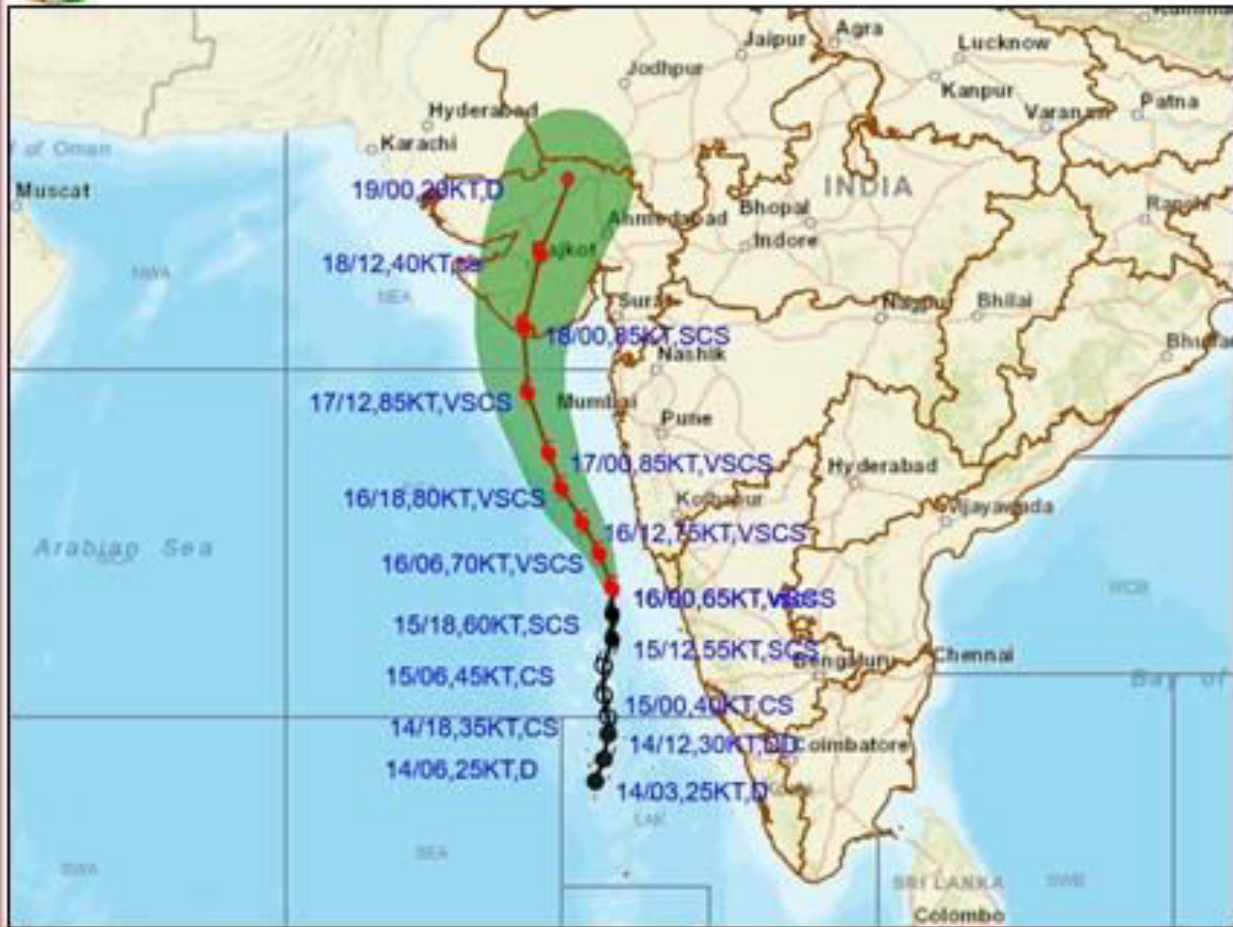
DATED: 16.05.2021



Spatial rainfall distribution: Isolated: <25%, A few: 26-50%, Many: 51-75%, Most: 76-100%  
Rainfall amount (mm): Heavy rain: 64.5 – 115.5, Very heavy rain: 115.6 – 204.4, Extremely heavy rain: 204.5 or more.



**OBSERVED AND FORECAST TRACK ALONGWITH CONE OF UNCERTAINTY OF VERY SEVERE CYCLONIC STORM "TAUKTAE" OVER EASTCENTRAL ARABIAN SEA BASED ON 0000 UTC OF 16<sup>TH</sup> MAY, 2021**



DATE/TIME IN UTC

IST-UTC + 0530

L: LOW PRESSURE AREA

WML: WELL MARKED LOW PRESSURE AREA

D: DEPRESSION (17-27 KT)

DD: DEEP DEPRESSION (28-33 KT)

CS: CYCLONIC STORM (34-47 KT)

SCS: SEVERE CYCLONIC STORM (48-63KT)

VSCS: VERY SEVERE CYCLONIC STORM (64-89 KT)

ESCS: EXTREMELY SEVERE CYCLONIC STORM (90-119 KT)

SuCS: SUPER CYCLONIC STORM (≥120 KT)

● LESS THAN 34 KT

○ 34-47 KT

● ≥ 48 KT

— OBSERVED TRACK

— FORECAST TRACK

— CONE OF UNCERTAINTY

AREA OF MAXIMUM SUSTAINED WIND SPEED:

— 28-33 KT (52-61 KMPH)

— 34-49 KT (62-91 KMPH)

— 50-63 KT (92-117 KMPH)

— ≥ 64 KT (≥118 KMPH)

**IMPACT OVER THE SEA**

MSW (knot/kmph)	Impact	Action
28-33 (52-61)	Very rough seas	Total suspension of fishing operations
34-49 (62-91)	High to very high seas	Total suspension of fishing operations
50-63 (92-117)	Very high seas	Total suspension of fishing operations
≥ 64 (≥118)	Phenomenal	Total suspension of fishing operations

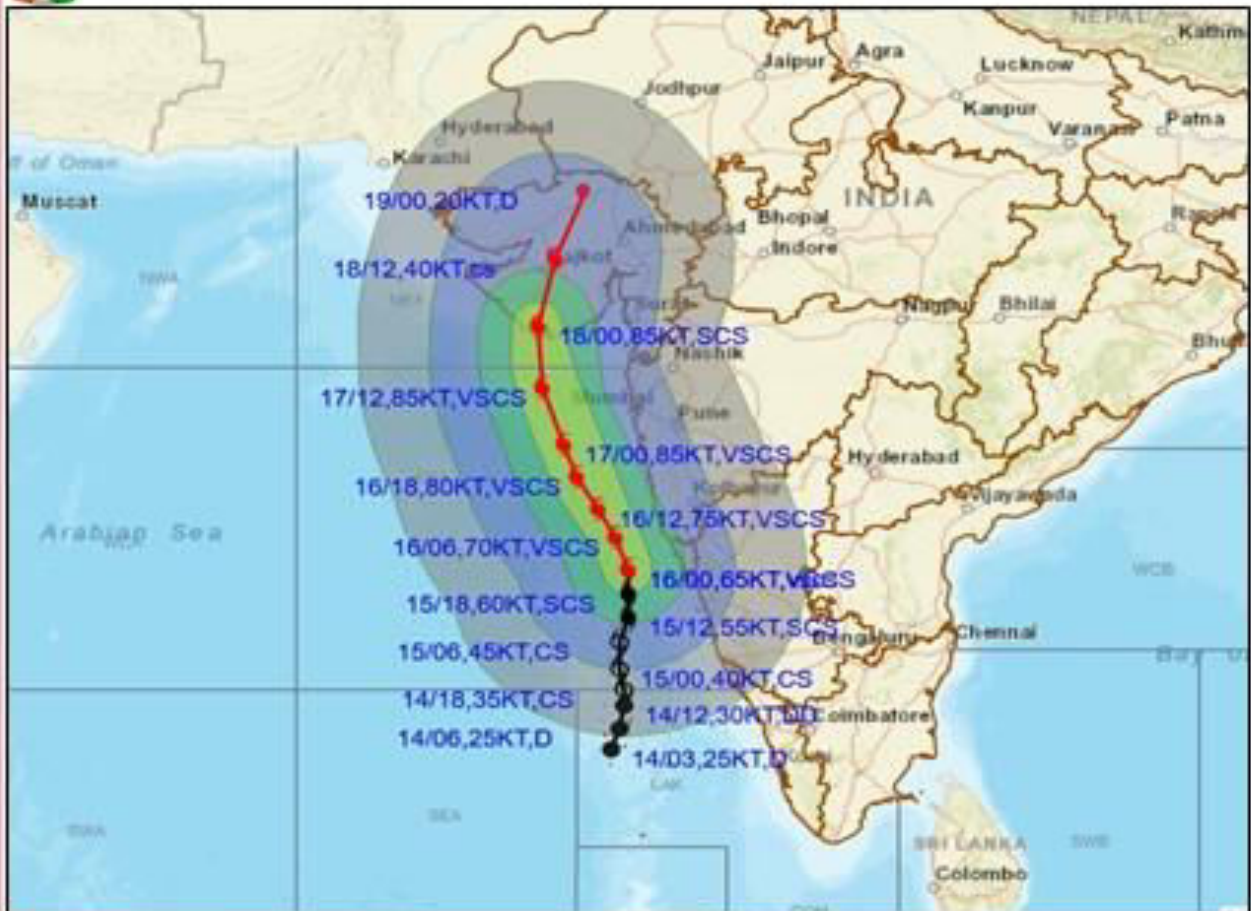
Spatial rainfall distribution: Isolated: <25%, A few: 26-50%, Many: 51-75%, Most: 76-100%

Rainfall amount (mm): Heavy rain: 64.5 – 115.5, Very heavy rain: 115.6 – 204.4, Extremely heavy rain: 204.5 or more.





**OBSERVED AND FORECAST TRACK ALONGWITH CONE OF UNCERTAINTY OF VERY SEVERE CYCLONIC STORM "TAUKTAE" OVER EASTCENTRAL ARABIAN SEA BASED ON 0000 UTC OF 16<sup>TH</sup> MAY, 2021.**



DATE/TIME IN UTC

IST-UTC + 0530

L: LOW PRESSURE AREA

WML: WELL MARKED LOW PRESSURE AREA

D: DEPRESSION (17-27 KT)

DD: DEEP DEPRESSION (28-33 KT)

CS: CYCLONIC STORM (34-47 KT)

SCS: SEVERE CYCLONIC STORM (48-63KT)

VSCS: VERY SEVERE CYCLONIC STORM (64-89 KT)

ESCS: EXTREMELY SEVERE CYCLONIC STORM (90-119 KT)

SuCS: SUPER CYCLONIC STORM (≥20 KT)

● LESS THAN 34 KT

○ 34-47 KT

● ≥ 48 KT

— OBSERVED TRACK

— FORECAST TRACK

— CONE OF UNCERTAINTY

AREA OF MAXIMUM SUSTAINED WIND SPEED:

— 28-33 KT (52-61 KMPH)

— 34-49 KT (62-91 KMPH)

— 50-63 KT (92-117 KMPH)

— ≥ 64 KT (≥118 KMPH)

**IMPACT OVER THE SEA**

MSW (knot/kmph)	Impact	Action
28-33 (52-61)	Very rough seas	Total suspension of fishing operations
34-49 (62-91)	High to very high seas	Total suspension of fishing operations
50-63 (92-117)	Very high seas	Total suspension of fishing operations
≥ 64 (≥118)	Phenomenal	Total suspension of fishing operations

Spatial rainfall distribution: Isolated: <25%, A few: 26-50%, Many: 51-75%, Most: 76-100%

Rainfall amount (mm): Heavy rain: 64.5 – 115.5, Very heavy rain: 115.6 – 204.4, Extremely heavy rain: 204.5 or more.

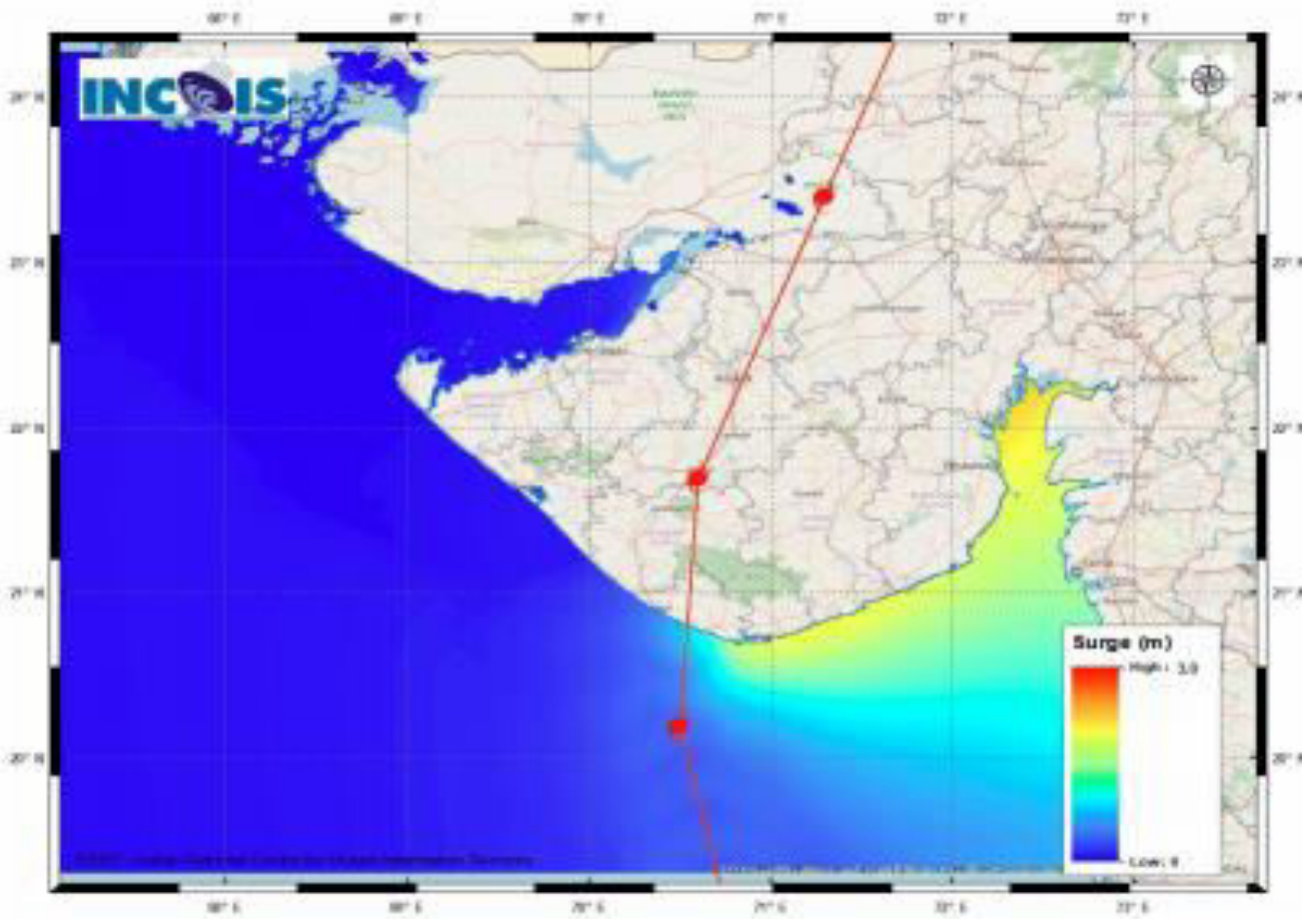


Figure:Storm Surge Map

Spatial rainfall distribution: Isolated: <25%, A few: 26-50%, Many: 51-75%, Most: 76-100%  
 Rainfall amount (mm): Heavy rain: 64.5 – 115.5, Very heavy rain: 115.6 – 204.4, Extremely heavy rain: 204.5 or more.

**STORM SURGE HEIGHT INFORMATION:**

\* The below listed surge heights are over and above astronomical tide.

MANDAL/TALUK	DISTRICT	STATE / UNION TERRITORY	NEAREST PLACE OF HABITATION	STORM SURGE (m) <sup>#</sup>	EXPECTED INUNDATION EXTENT (km)
Una	Junagadh	Gujarat	Una	1.4-3.0	Upto 0.9
Kodinar	Gir Somnath	Gujarat	Kodinar	1.3-2.4	Upto 0.4
Kodinar	Gir Somnath	Gujarat	Kodinar	1.3-2.4	Upto 0.4
Khambhat	Anand	Gujarat	Akhol	0.8-2.3	Upto 1.2
Khambhat	Anand	Gujarat	Akhol	0.8-2.3	Upto 1.2
Dhandhuka	Ahmadabad	Gujarat	Mithi	0.6-2.3	Upto 2.1
Diu	Diu	Daman and Diu	Diu	1.1-2.3	Upto 0.7
Rajula	Amreli	Gujarat	Parva	0.6-2.2	Upto 0.3
Jambusar	Bharuch	Gujarat	Devla	1.1-2.2	Upto 2.2
Jafarabad	Amreli	Gujarat	Rohisa	2.0-2.1	Upto 0.1
Mahuva	Bhavnagar	Gujarat	Mahuva	1.7-2.0	Upto 0.1
Mahuva	Bhavnagar	Gujarat	Mahuva	1.7-2.0	Upto 0.1
Alibag	Raigarh	Maharashtra	Ranjankhar Devali	0.3-0.7	Upto 1.9
Bharuch	Bharuch	Gujarat	Manad	1.6-1.8	Upto 0.1
Bhavnagar	Bhavnagar	Gujarat	Narbad	1.2-2.2	Upto 2.4
Bombay	Mumbai City	Maharashtra	Greater Bombay	0.6-0.8	Nil
Borsad	Anand	Gujarat	Tithor	1.6-1.6	Upto 0.3
Chorasi	Surat	Gujarat	Bhimpor	1.2-1.5	Upto 0.5
Dahanu	Palghar	Maharashtra	Narpad	0.2-1.0	Upto 1.0
Daman	Daman	Daman and Diu	Daman	0.8-1.1	Nil
Gandevi	Navsari	Gujarat	Mendhar	1.1-1.3	Upto 1.2
Greater Bombay	Mumbai Suburban	Maharashtra	Greater Bombay	0.7-0.8	Upto 1.6
Hansot Mahal	Bharuch	Gujarat	Kamivajal	1.0-1.8	Upto 0.9
Hazira	Surat	Gujarat	Hajira Ina (ina)	0.9-1.7	Upto 1.0
Jamnagar	Jamnagar	Gujarat	Jamnagar	0.3-0.3	Nil
Jodiya	Jamnagar	Gujarat	Navlakhi	0.2-0.4	Upto 0.1
Maliya	Junagadh	Gujarat	Vadodra Dodiya	0.4-0.4	Upto 0.1
Mangaon	Raigarh	Maharashtra	Water Body	0.5-0.5	Upto 0.1
Mangrol	Junagadh	Gujarat	Khambhaliya	0.2-0.3	Upto 0.1
Mochi	Kachchh	Gujarat	Navlakhi	0.2-0.4	Upto 1.0
Mundra	Bhavnagar	Gujarat	Vadgam	1.7-1.7	Upto 0.6
Murud	Raigarh	Maharashtra	Water Body	0.5-0.6	Upto 0.2
Navsari	Navsari	Gujarat	Borsi	0.7-1.5	Upto 0.4

Spatial rainfall distribution: Isolated: &lt;25%, A few: 26-50%, Many: 51-75%, Most: 76-100%

Rainfall amount (mm): Heavy rain: 64.5 – 115.5, Very heavy rain: 115.6 – 204.4, Extremely heavy rain: 204.5 or more.