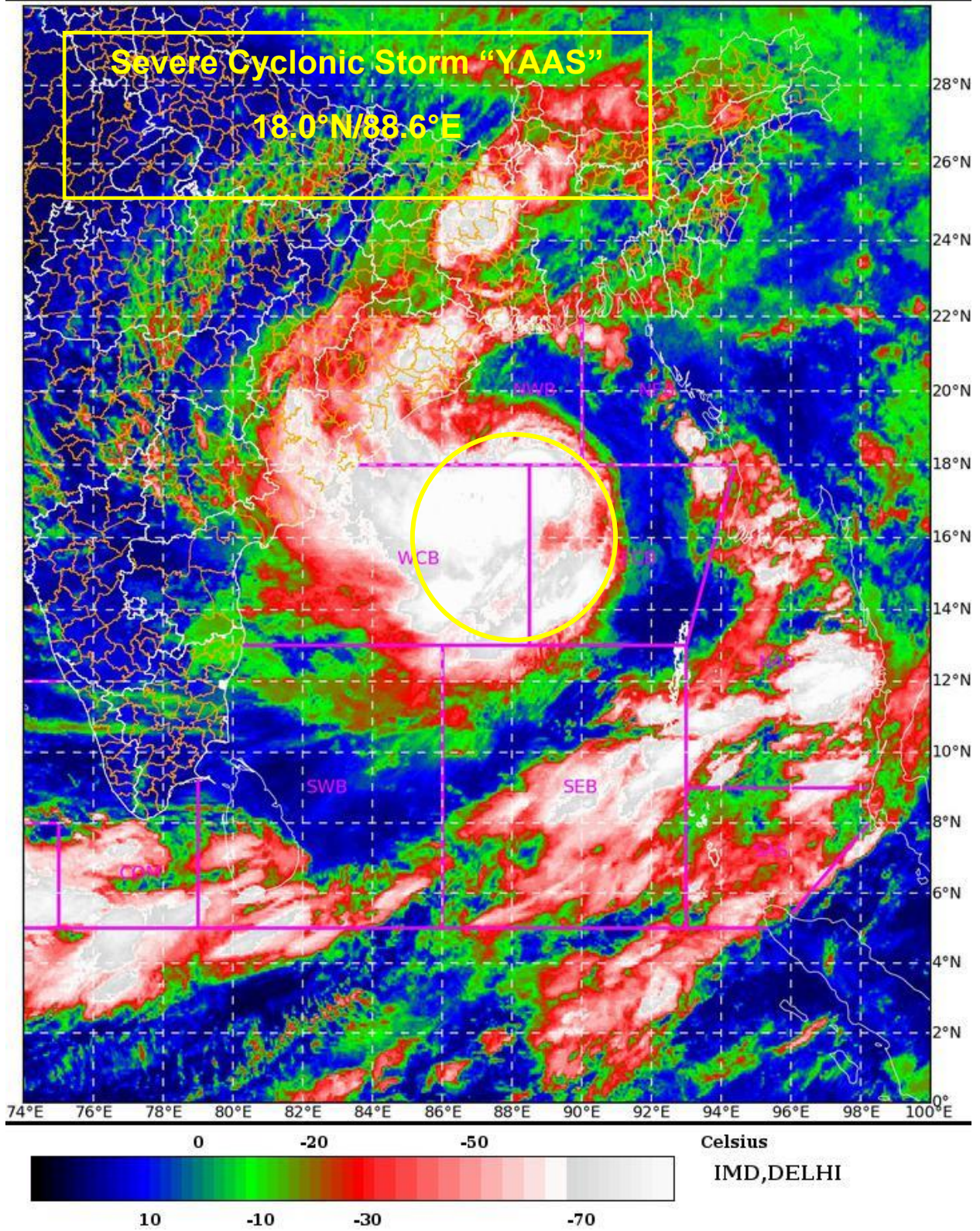
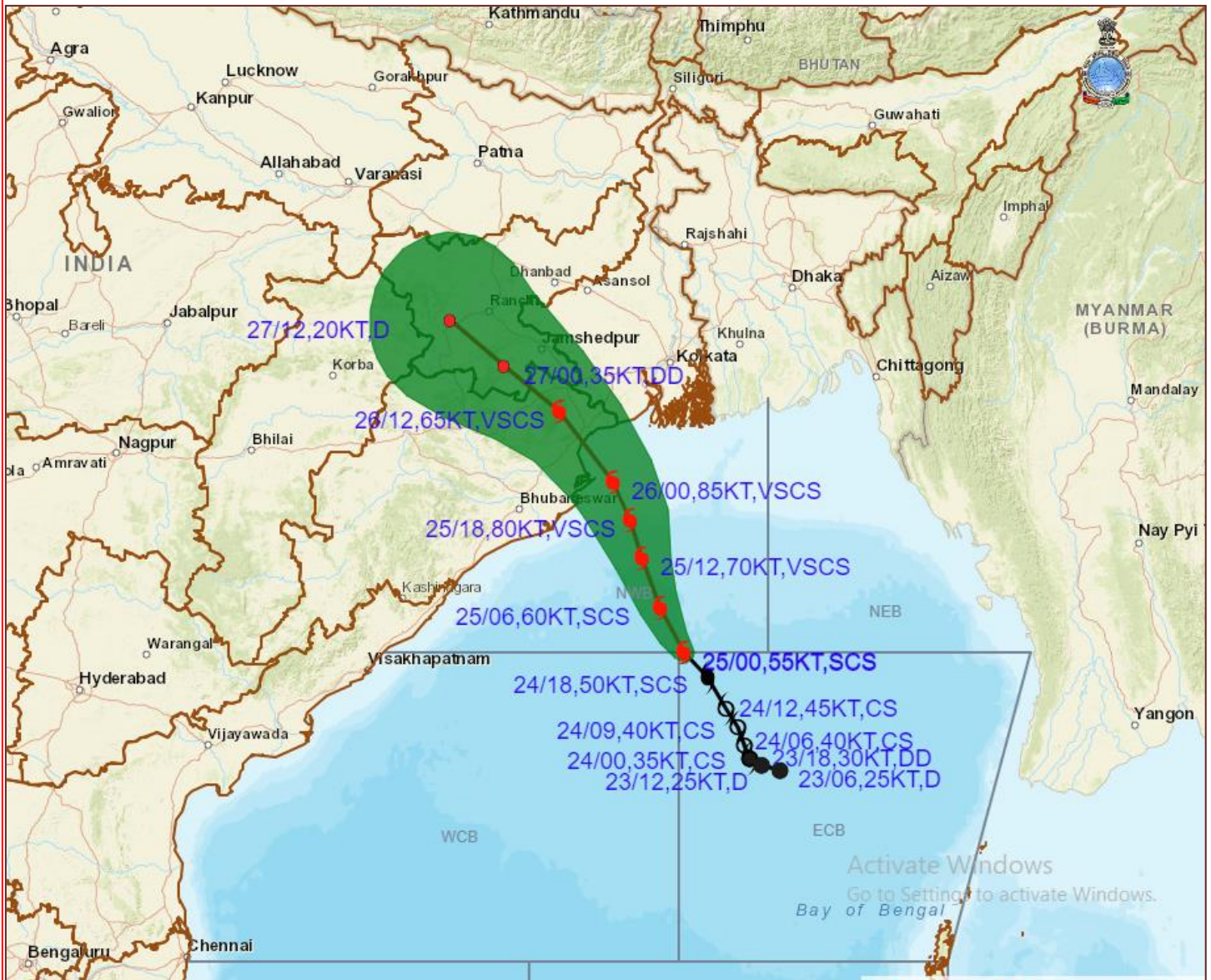


SAT : INSAT-3D IMG      25-05-2021/(0000 to 0026) GMT  
IMG\_TIR1\_TEMP 10.8 um    25-05-2021/(0530 to 0556) IST  
L1C Mercator





# OBSERVED AND FORECAST TRACK ALONGWITH CONE OF UNCERTAINTY OF SEVERE CYCLONIC STORM "YAAS" OVER EASTCENTRAL BAY OF BENGAL BASED ON 0000 UTC OF 25<sup>th</sup> MAY, 2021

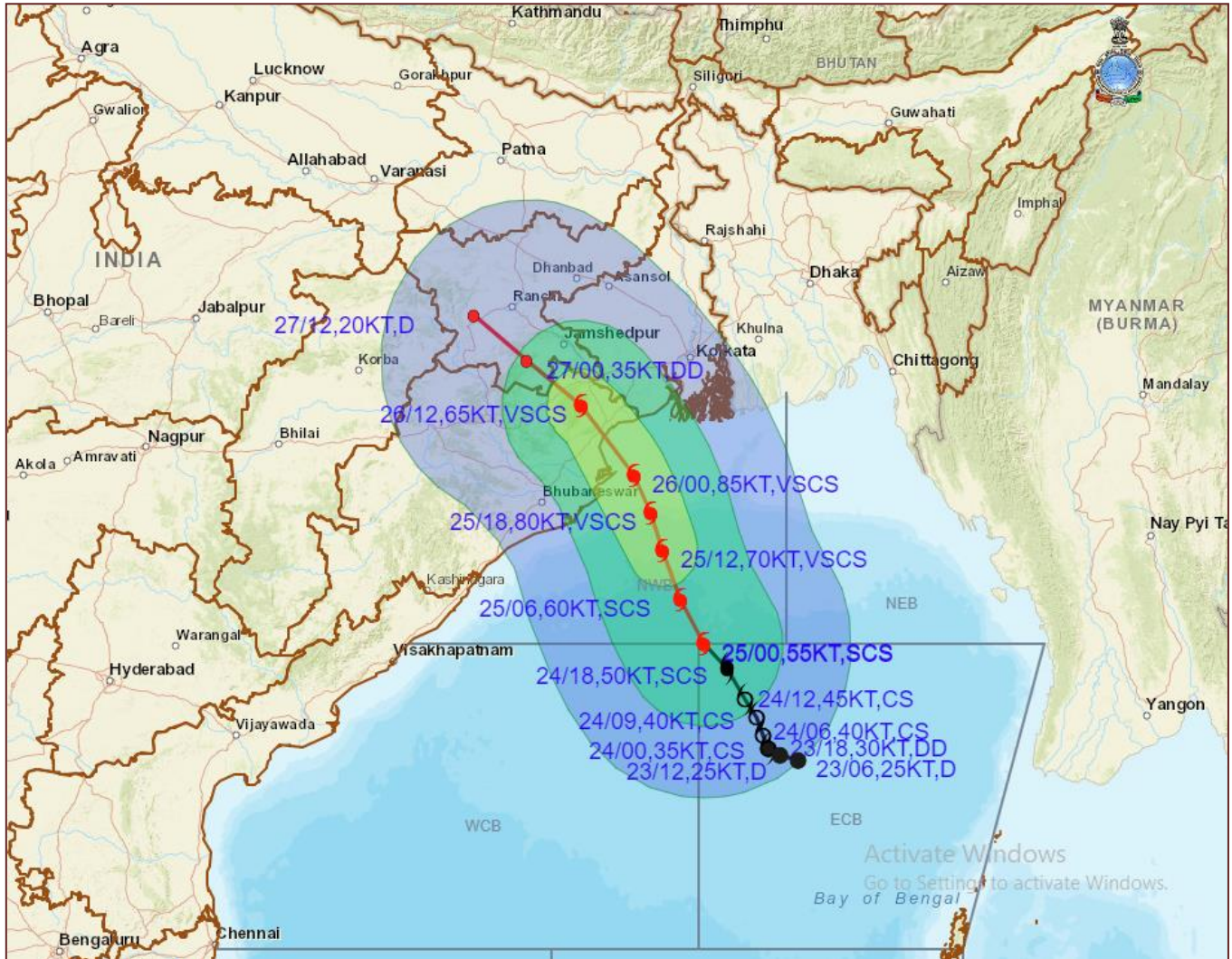


**DATE/TIME IN UTC**  
**IST=UTC + 0530**  
**L: LOW PRESSURE AREA**  
**WML: WELL MARKED LOW PRESSURE AREA**  
**D: DEPRESSION (17-27 KT)**  
**DD: DEEP DEPRESSION (28-33 KT)**  
**CS: CYCLONIC STORM (34-47 KT)**  
**SCS: SEVERE CYCLONIC STORM (48-63KT)**  
**VSCS: VERY SEVERE CYCLONIC STORM (64-89 KT)**  
**ESCS: EXTREMELY SEVERE CYCLONIC STORM (90-119 KT)**  
**SuCS: SUPER CYCLONIC STORM (≥ 120 KT)**

- LESS THAN 34 KT
- 34-47 KT
- ≥ 48 KT
- OBSERVED TRACK
- FORECAST TRACK
- CONE OF UNCERTAINTY



# OBSERVED AND FORECAST TRACK ALONGWITH QUADRANT WIND DISTRIBUTION OF SEVERE CYCLONIC STORM "YAAS" OVER EASTCENTRAL BAY OF BENGAL BASED ON 0000 UTC OF 25<sup>th</sup> MAY, 2021



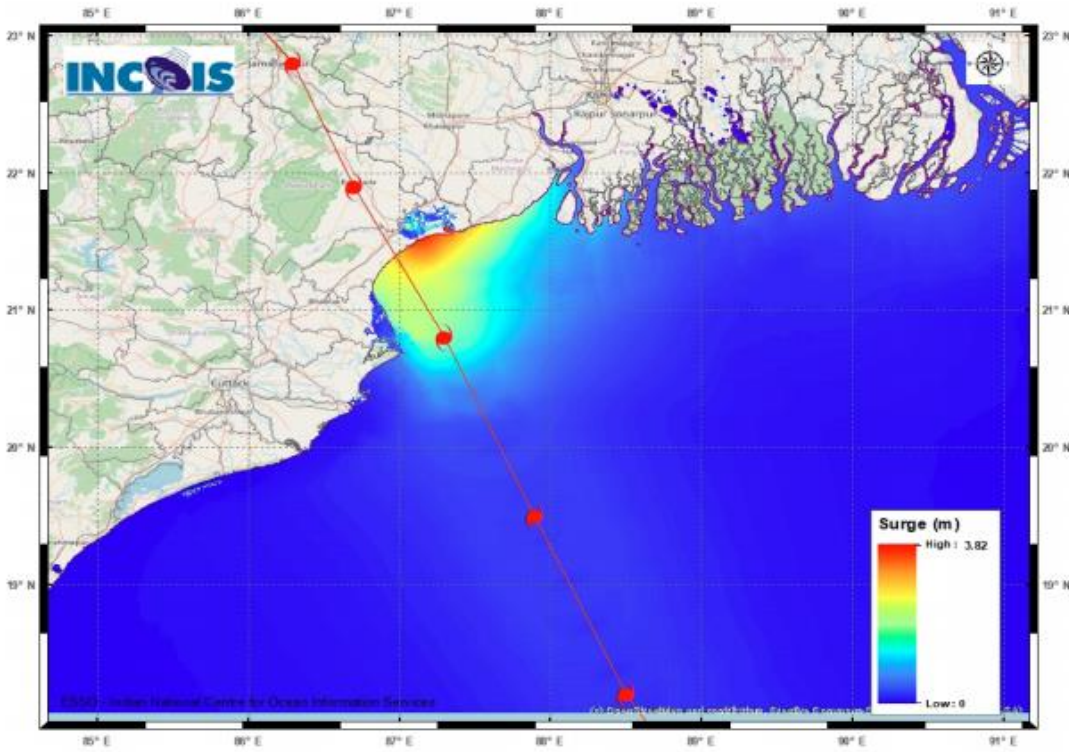
DATE/TIME IN UTC  
 IST=UTC + 0530  
 L: LOW PRESSURE AREA  
 WML: WELL MARKED LOW PRESSURE AREA  
 D: DEPRESSION (17-27 KT)  
 DD: DEEP DEPRESSION (28-33 KT)  
 CS: CYCLONIC STORM (34-47 KT)  
 SCS: SEVERE CYCLONIC STORM (48-63KT)  
 VSCS: VERY SEVERE CYCLONIC STORM (64-89 KT)  
 ESCS: EXTREMELY SEVERE CYCLONIC STORM (90-119 KT)  
 SuCS: SUPER CYCLONIC STORM (≥ 120 KT)

● LESS THAN 34 KT  
 ○ 34-47 KT  
 ⊙ ≥ 48 KT  
 — OBSERVED TRACK  
 — FORECAST TRACK  
 ▲ CONE OF UNCERTAINTY  
 AREA OF MAXIMUM SUSTAINED WIND SPEED:  
 ■ 28-33 KT (52-61 KMPH)  
 ■ 34-49 KT (62-91 KMPH)  
 ■ 50-63 KT (92-117 KMPH)  
 ■ ≥ 64 KT (≥ 118 KMPH)

### IMPACT OVER THE SEA

MSW (knot/kmph)	Impact	Action
28-33 (52-61)	Very rough seas	Total suspension of fishing operations
34-49 (62-91)	High to very high seas	Total suspension of fishing operations
50-63 (92-117)	Very high seas	Total suspension of fishing operations
≥ 64 (≥ 118)	Phenomenal	Total suspension of fishing operations

Storm Surge Forecast around the time of Landfall:

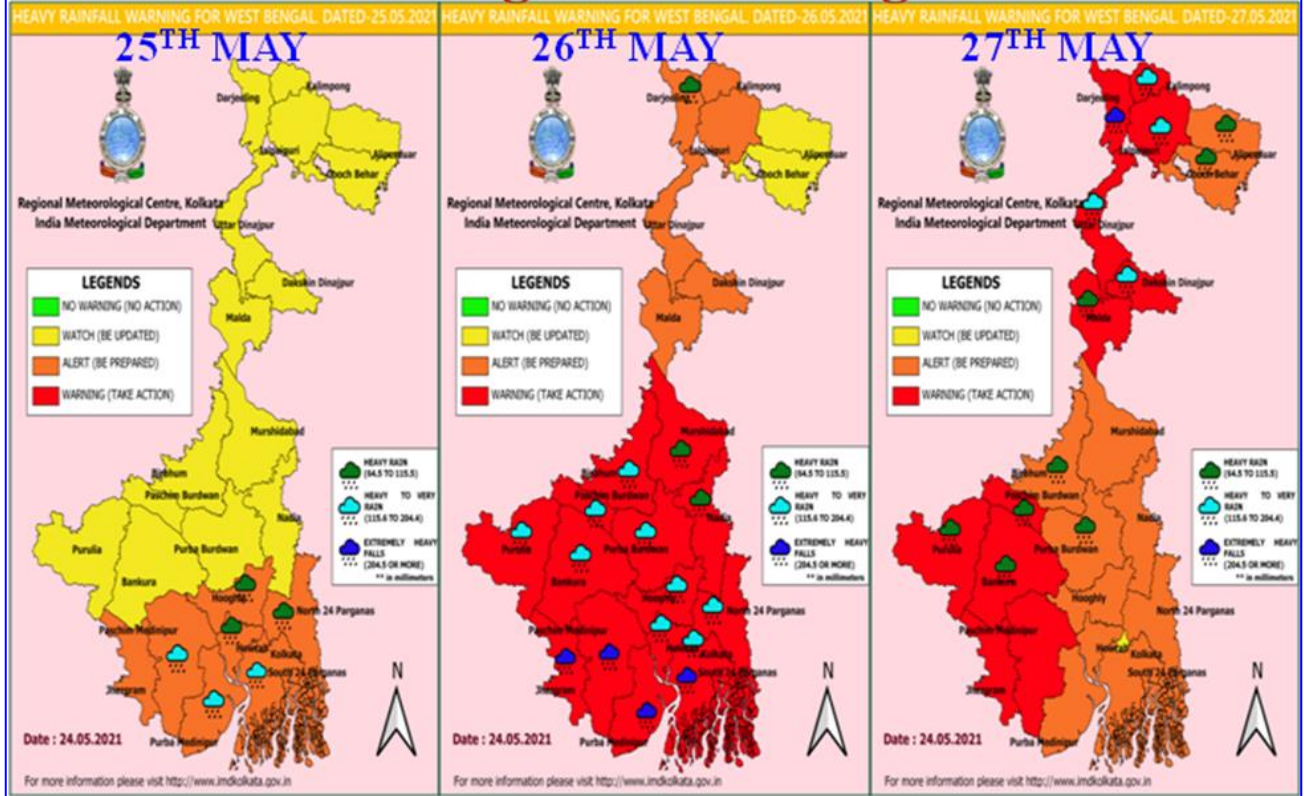


**STORM SURGE HEIGHT INFORMATION:**

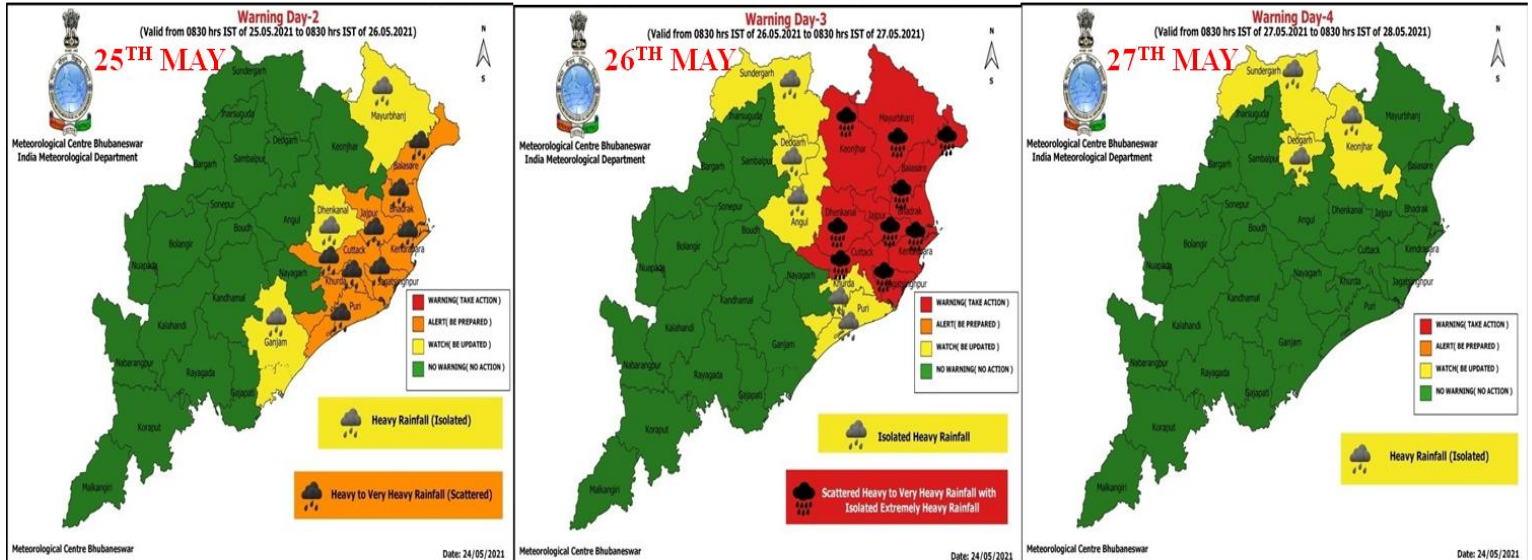
\* The below listed surge heights are over and above astronomical tide.

MANDAL/TALUK	DISTRICT	STATE / UNION TERRITORY	NEAREST PLACE OF HABITATION	STORM SURGE (m) *	EXPECTED INUNDATION EXTENT (km)
Baleshwar	Baleshwar	Odisha	Kumbhigari	2.1-3.8	Upto 2.33
Basirhat	North 24 Parganas	West Bengal	Amlamethi	0.5-0.9	Upto 0.37
Bhadrak	Bhadrak	Odisha	Mohanpur	0.9-2.1	Upto 7.02
Diamond Harbour	South 24 Parganas	West Bengal	Pashchim Bhabanipur	0.5-1.1	Upto 0.78
Kanthi	Purba Medinipur	West Bengal	Safar Chata	0.5-2.9	Upto 1.50
Kendraparha	Kendrapara	Odisha	Tikayat Nagar	0.5-1.5	Upto 2.64
Tamluk	Purba Medinipur	West Bengal	Jamitta	0.5-1.3	Upto 0.42
Uluberiya	Haora	West Bengal	Orphuli	0.5-0.8	Upto 0.44

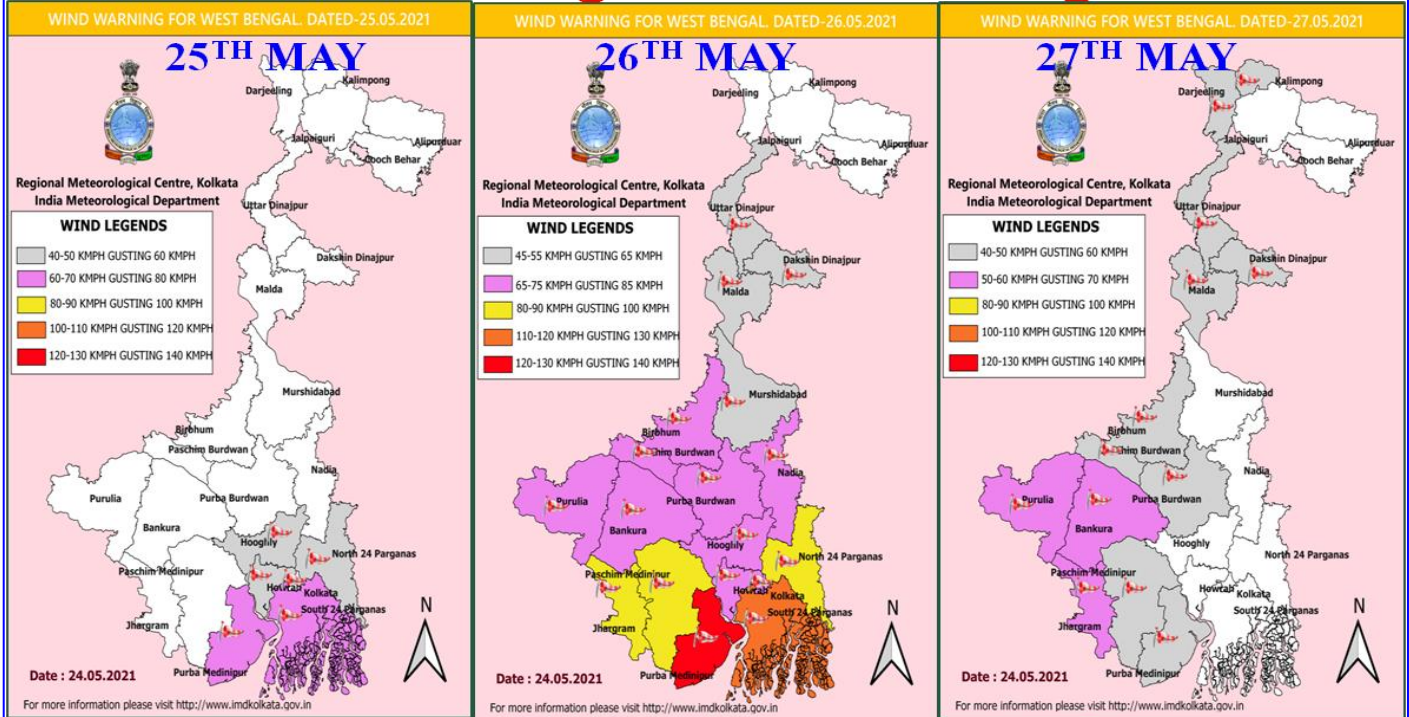
# Rainfall warning for West Bengal & Sikkim



# Rainfall forecast Odisha



# Wind warning for West Bengal



# Wind warning for Odisha

